



COMPENSATED
ACOUSTIC VELOCITY
LOG

COMPANY: REICHOLD ENERGY CORPORATION
 WELL: COLUMBIA COUNTY NO. 3
 FIELD: NEHALEM BASIN
 COUNTY: COLUMBIA STATE: OREGON
 Location: 1561' SOUTH & 630' WEST OF THE IEL NORTH-EAST CORNER OF: (W.B.M.)
 Sec: 10 Twp: 6N Rge: 5W
 Permament Datum: G.L. Elev: 958.2
 Datum Measured From: K.B. Elev: 858.2
 Date: 5-29-79
 Run No: 09E
 Depth-Driller: 2932
 Depth-Welex: 2929
 Btm. Log Inter: 396
 Log Log Inter: 7.7 @ 391
 Casing-Driller: 396
 Casing-Welex: 396
 Bit Size: 6 1/4
 Type Fluid in Hole: LIQUID-SULF
 Dens. Visc: 75 1.47
 pH: 11.4
 Source of Sample: CIRCULATED
 R₁ @ Meas. Temp.: 2.94 @ 80 °F
 R₂ @ Meas. Temp.: 2.57 @ 70 °F
 R₃ @ Meas. Temp.: 2.92 @ 70 °F
 Source R₁: MEASURED
 R₁ @ BHT: 2.27 @ 116 °F
 Time Since Circ: 6 HRS.
 Max. Rhe. Temp.: 116 °F @ BHT.
 Equip. Location: 9430 I WOODLAND
 Recorded By: KENNEDY
 Witnessed By: KENNEDY, CLARE, BRUER

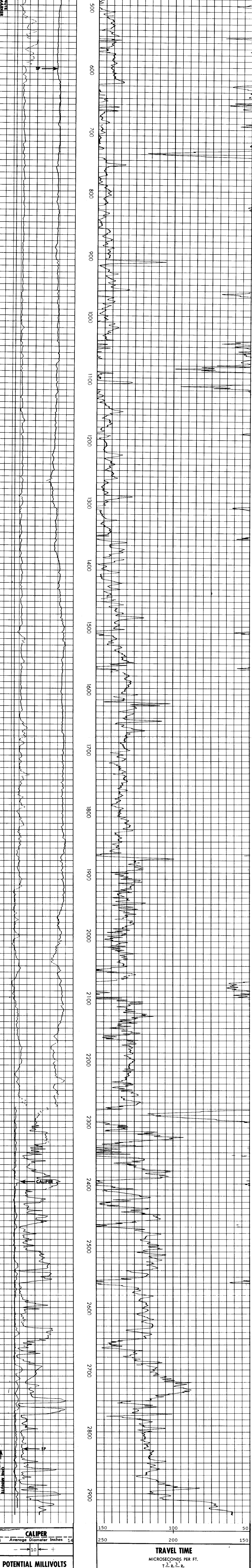
Service Ticket No 04877 Remarks:

Change in Mud Type or Additional Samples		SCALE CHANGES		
Date	Sample No.	Type Log	Depth	Scale Up Hole
Type Fluid in Hole				Scale Down Hole
Dens. Visc				
pH Fluid Loss				
Source of Sample				
R ₁ @ Meas. Temp.				
R ₂ @ Meas. Temp.				
R ₃ @ Meas. Temp.				
Source R ₁				
R ₁ @ BHT				
R ₂ @ BHT				
R ₃ @ BHT				

Welex does not guarantee the accuracy of any interpretation of log data, conversion of log data to physical rock parameters, or recommendations which may be given by Welex personnel or which may appear on the log in any other form. Any use of such data, interpretations, conversions, or recommendations agrees that Welex is not responsible, except where due to gross negligence or willful misconduct for any loss, damages or expenses resulting from the use thereof.

2" = 100'

POTENTIAL MILLIVOLTS		
-	10	+
CALIPER		
4	Average Diameter Inches	14



POTENTIAL MILLIVOLTS		TRAVEL TIME	
-	10	+	
CALIPER		MICROSECONDS PER FT.	
4	Average Diameter Inches	150	150
		250	200

REICHOLD ENERGY CORPORATION
 COLUMBIA COUNTY NO. 3
 NEHALEM BASIN
 COLUMBIA COUNTY, OREGON

T.D. LOGGED 2929
 T.D. DRILLER 2932
 T.D. WELEX 2932

