

COMPANY REICHHOLD ENERGY CORP.
 WELL COLUMBIA COUNTY NO. 3
 FIELD NEHALEM BASIN
 COUNTY COLUMBIA STATE OREGON
 LOCATION 15611 SOUTH & 630' WEST OF NORTHEAST CORNER OF JEL (W.B.M.)
 OTHER SERVICES: C/AVL

COMPANY REICHHOLD ENERGY CORPORATION
 WELL COLUMBIA COUNTY NO. 3
 FIELD NEHALEM BASIN
 COUNTY COLUMBIA STATE OREGON

Permanent Datum: GL Elev. 858.2
 KB Elev. 869.4
 D.F. 838.2
 GL 838.2

Leit Measured From: KB
 Drilling Measured From: KB

Date: 5-29-79
 Run No.: 09E

Depth - Welex: 2932
 Depth - Driller: 2931
 Top Log Inter.: 396

Casing - Driller: 7' @ 391
 Casing - Welex: 396

Bit Size: 6 1/4
 Type Fluid in Hole: LIGNO-SULF

Dens.: 1 Visc.: 1
 Fluid Loss: 12.0 ml
 Source of Sample: C/AVL
 Rm @ Meas. Temp.: 2.92 @ 70 F
 Rmc @ Meas. Temp.: 1.5 @ 70 F
 Source Flow Rate: MEASURED
 Rm @ BHT: 3.2 @ 116 F
 Rmc @ BHT: 1.7 @ 116 F
 Time Since Circ.: 3 1/2 HOURS
 Max. Rec. Temp.: 116 F @ BHT
 Equip.: Location: 9430 MDLND
 Recorded By: KENNEDY
 Witnessed By: KURNIE, CLARE, BRUEF

Service Ticket No. 048877

Date	Sample No.	Run No.
	1	1
	2	2
	3	3
	4	4

Depth - Driller: 2931
 Type Fluid in Hole: LIGNO-SULF

Dens.	Visc.	Fluid Loss	ml
1	1	12.0	ml

Source of Sample: C/AVL

Rm @ Meas. Temp.	Rmc @ Meas. Temp.	Source Flow Rate	Rm @ BHT	Rmc @ BHT
2.92 @ 70 F	1.5 @ 70 F	MEASURED	3.2 @ 116 F	1.7 @ 116 F

Time Since Circ.: 3 1/2 HOURS
 Max. Rec. Temp.: 116 F @ BHT
 Equip.: Location: 9430 MDLND
 Recorded By: KENNEDY
 Witnessed By: KURNIE, CLARE, BRUEF

Welex does not guarantee the accuracy of any interpretation of log data, conversion of log data to physical rock parameters, or recommendations which may be given by Welex personnel or which may appear on the log or in any other form. Any user of such data, interpretations, conversions, or recommendations agrees that Welex is not responsible, except where due to gross negligence or willful misconduct, for any loss, damages, or expenses from the use thereof.

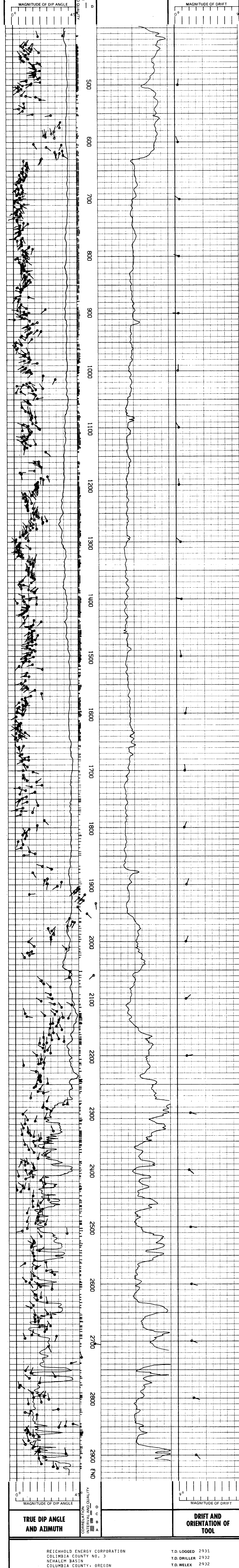
Magnetic Declination NORTH 20.5 EAST

TABLE OF CONSTANTS FOR DETERMINING VERTICAL DIFFERENCE AT VARIOUS DIP ANGLES

DIP ANGLES	CONSTANT	DIP ANGLES	CONSTANT	DIP ANGLES	CONSTANT	DIP ANGLES	CONSTANT
1	.0175	11	.194	21	.384	35	.700
2	.035	12	.213	22	.404	40	.839
3	.052	13	.231	23	.425	45	1.000
4	.070	14	.249	24	.446	50	1.192
5	.088	15	.268	25	.465	55	1.428
6	.105	16	.287	26	.487	60	1.732
7	.123	17	.306	27	.509	65	2.144
8	.141	18	.325	28	.531	70	2.748
9	.158	19	.344	29	.554	75	3.732
10	.176	20	.364	30	.577	80	5.671

Vertical difference in feet is obtained by multiplying the constant for any given dip angle by the horizontal distance in feet.
 Example: Dip angle 10°. Horizontal distance 440 ft.
 Vertical difference = .176 x 440 = 77.44

GRAPHIC PRESENTATION



REICHHOLD ENERGY CORPORATION
 COLUMBIA COUNTY NO. 3
 NEHALEM BASIN
 COLUMBIA COUNTY, OREGON

T.D. LOGGED 2931
 T.D. DRILLER 2932
 T.D. WELEX 2932
 ELEV: KB 869.4 GL 858.2