

**ACOUSTIC CEMENT BOND MICRO-SEISMOGRAM**

5" = 100'

COMPANY REICHOLD ENERGY CORPORATION  
 WELL COLUMBIA COUNTY NO. 4 REDRILL NO. 1  
 FIELD MIST  
 COUNTY COLUMBIA STATE OREGON

Location 867 SOUTH & 1149 WEST  
 FROM THE NORTHEAST CORNER OF:  
 (W.B. & M.)  
 Sec. 15 Twp. 6N Rge. 5W  
 Other Services: PERF

Permanent Datum G.L. 753.6  
 Log Measured From K.B. 765.0  
 Drilling Measured From K.B. 753.6  
 Plot No. ONE  
 Date & Time Survey 7-2-82  
 Date & Time Cementing 7-21-82  
 Type Cementing Operation PRIMARY  
 Depth Water 2630

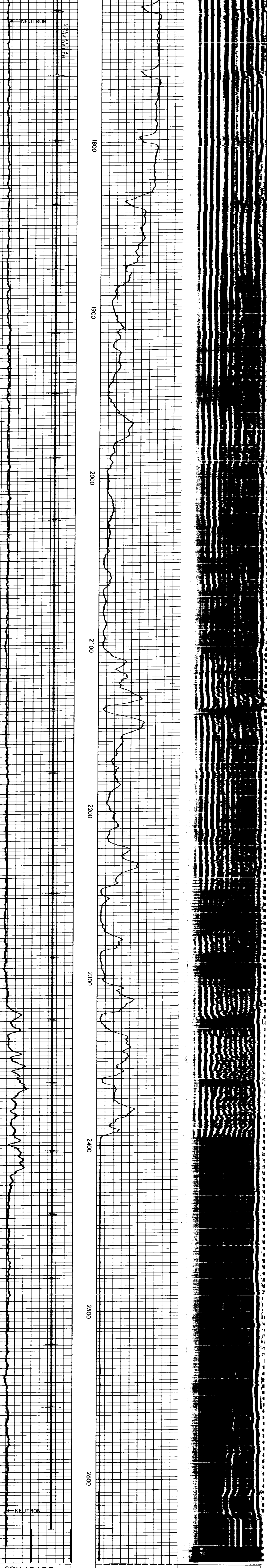
Logged Interval 2630 to 1700  
 Cement Driller 4.5 @ 2679  
 Fiscal Collar—D.V. Tool 2630  
 Squeezers Depth N/A  
 Amount & Type Cement N/A  
 Type Fluid in Hole WATER  
 Fluid Level N/A  
 Strain P-H-A-C N/A  
 Weight by gal. lbs. N/A  
 Depth of Cement Top 1900  
 Depth of Cement Bottom 90  
 Mass loss temperature 24.608  
 Tool Use 4 FEET 2 INCHES  
 Spacing Recorded 9017 JORDAN  
 Equipment—Location WILLIAMSON  
 Recorded by  
 Witnessed by

BORE HOLE RECORD		CASING RECORD	
Bit Size	From To	Csg. Size	Wt. Surface
6.25	400 2679	7	4.5
		4.5	10.5

Service Ticket No. 147804 Remarks NO CEMENT DATA AVAILABLE...  
 DRAFTED BY — JOHN YAECK

Welex does not guarantee the accuracy of any interpretation of log data, conversion of log data to physical rock parameters, or recommendations which may be given by Welex personnel or which may appear on the log or in any other form. Any user of such data, interpretations, conversions, or recommendations agrees that Welex is not responsible except where due to gross negligence or willful misconduct, for any loss, damages, or expenses resulting from the use thereof.

<b>NEUTRON</b> COUNT RATE INCREASES <b>COLLAR LOG</b>	<b>AMPLITUDE</b> CEMENT BOND INCREASES <b>MICRO-SEISMOGRAM® LOG</b>
---	---



<b>COLLAR LOG</b> COUNT RATE INCREASES <b>NEUTRON</b>	<b>AMPLITUDE</b> CEMENT BOND INCREASES <b>MICRO-SEISMOGRAM® LOG</b>
---	---

REICHOLD ENERGY CORPORATION  
 COLUMBIA COUNTY NO. 4 REDRILL NO. 1  
 MIST  
 COLUMBIA COUNTY, OREGON

T.D. LOGGED 2630  
 T.D. DRILLER 2630  
 T.D. WELEX 2630

ELEV: GL 753.6 KB 765.0

REPEAT SECTION

