



DIP LOG CALCULATIONS

2" = 100'

COMPANY REICHHOLD ENERGY CORPORATION
 WELL COLUMBIA COUNTY NO. 5 REDRILL NO. 1
 FIELD NEHALEM BASIN
 COUNTY COLUMBIA STATE OREGON
 LOCATION 863' SOUTH & 1318' EAST
 FROM NORTHWEST CORNER OF 1/4 SECTION 10 Twp. 6N Rge. 5W
 NEHALEM BASIN

Permanent Datum: 61 Elev: 916.2
 Log Measured From: KB
 Drilling Measured From: KB
 Date: 7-7-79
 Run No.: 01NE
 Depth-Driller: 3128
 Depth-Welex: 3126
 Btm. Log Inter.: 3124
 Top Log Inter.: 590
 Casing-Driller: 7 @ 399
 Casing-Welex: 400

Bit Size: 6 1/4
 Type Fluid in Hole: LIQND SULF
 Dens. Visc.: 74 1.42
 pH: 9
 Fluid Loss: 1.1
 Source of Sample: PT
 R_m @ Meas. Temp.: 2.04 @ 74 F
 R_m @ Meas. Temp.: 2.00 @ 68 F
 R_m @ Meas. Temp.: 2.08 @ 68 F
 Source R_m: MEASURED
 R_m @ BHT: 1.29 @ 117 F
 Time Since Circ: 6 HOURS
 Max. Pres. Temp.: 117 @ BHT
 Location: 9A30 WDLND
 Witnessed By: KENNEDY, CLARE, BRUER

Service Ticket No. 048886 Remarks: Change in Mud Type or Additional Samples

Date	Sample No.	Depth-Driller	Type Fluid in Hole	Dens.	Visc.	pH	Fluid Loss	Source of Sample	R _m @ Meas. Temp.	R _m @ Meas. Temp.	Source R _m	R _m @ BHT	Time Since Circ	Max. Pres. Temp.	Location	Witnessed By

SCALE CHANGES		Type Log	Depth	Scale Up Hole	Scale Down Hole

EQUIPMENT DATA		Run No.	Tool Type and No.	Pad Type	Tool Position	Other
		01NE	DIP 12101			
			MAND.			

Welex does not guarantee the accuracy of any interpretation of log data, conversion of log data to physical rock parameters, or recommendations which may be given by Welex personnel or which may appear on the log or any other report. Any user of such data, interpretations, conversions, or recommendations agrees that Welex is not responsible, except where due to gross negligence or willful misconduct on the part of Welex, for any loss, damages, or expenses resulting from the use thereof.

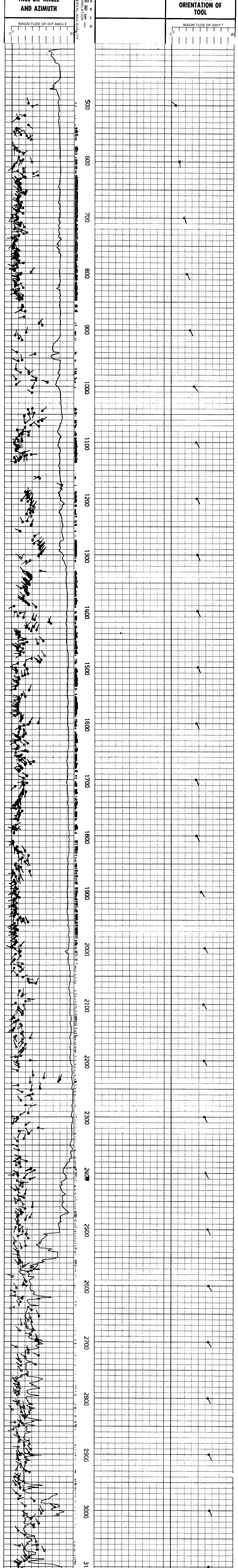
Magnetic Declination: NORTH 20.5 EAST

TABLE OF CONSTANTS FOR DETERMINING VERTICAL DIFFERENCE AT VARIOUS DIP ANGLES

DIP ANGLES Degrees	CONSTANT	DIP ANGLES Degrees	CONSTANT	DIP ANGLES Degrees	CONSTANT	DIP ANGLES Degrees	CONSTANT
1	.0175	11	.194	21	.384	35	.700
2	.035	12	.213	22	.404	40	.839
3	.052	13	.231	23	.425	45	1.000
4	.070	14	.249	24	.445	50	1.192
5	.088	15	.268	25	.466	55	1.428
6	.105	16	.287	26	.487	60	1.732
7	.123	17	.306	27	.509	65	2.144
8	.141	18	.325	28	.531	70	2.748
9	.158	19	.344	29	.554	75	3.732
10	.176	20	.364	30	.577	80	5.671

Vertical difference in feet is obtained by multiplying the constant for any given dip angle by the horizontal distance in feet.
 Example: Dip angle 10°, Horizontal distance 440 ft.
 Vertical difference = .176 x 440 = 77.44

GRAPHIC PRESENTATION



REICHHOLD ENERGY CORPORATION
 COLUMBIA COUNTY NO. 5 REDRILL NO. 1
 NEHALEM BASIN
 COLUMBIA COUNTY, OREGON

T.D. LOGGED 3124
 T.D. DRILLER 3128
 T.D. WELEX 3126

ELEV: KB 947.62 GL 936.2