



INDUCTION • ELECTRIC LOG

COMPANY REICHHOLD ENERGY CORPORATION
 COLUMBIA CO. NO. 1
 NEHALEM BASIN
 COLUMBIA STATE ORE.

WELL COLUMBIA COUNTY NO. 5 R/D NO. 1
 NEHALEM BASIN

COUNTY COLUMBIA STATE OREGON
 Location 863' SOUTH AND 1318' EAST
 OF THE NORTHWEST CORNER OF SECT. 31
 (W.B. & M.)

Sec. 10 Twp. 6N Range 5W
 Permament Datum G.L. OR 11.42 Elev. K.B. 947.62
 Log Measured From K.B. F Above Perm Datum D.F. 936.2
 Drilling Measured From K.B. D.F. 936.2

Date 7-7-79
 Run No. ONE REDRILL
 Depth-Driller 3128
 Depth-Welex 3127
 Btm. Log Inter. 3121
 Log Log Inter. 3100 @ 399
 Casing-Welex 400
 B.S. 6 11.4

Dens. Liq. 1.42
 pH 1. Fluid Loss 9
 Source of Sample P.T.
 R_m @ Meas. Temp. 2.04 @ 74 °F
 R_w @ Meas. Temp. 2.00 @ 68 °F
 R_{nc} @ Meas. Temp. 2.08 @ 68 °F
 Source R_m R_w MESAURED
 R_m @ BHT 1.29 @ 117 °F
 R_w @ BHT 1.12 HRS.
 Time Since Circ. 3 1/2
 Max. Rec. Temp. 117 °F @ BHT
 Equip. Location 9430 W/D/JND
 Recorded by J. MENDELIC
 Interpreted by P. NEBRVILLE, J. CLARKE, W. BRUER

Service Ticket No. 046886 Remarks:

Change in Mud Type or Additional Samples		Type Log	Depth	SCALE CHANGES
Date	Sample No.			Scale Up Hole
				Scale Down Hole
Type Fluid in Hole				

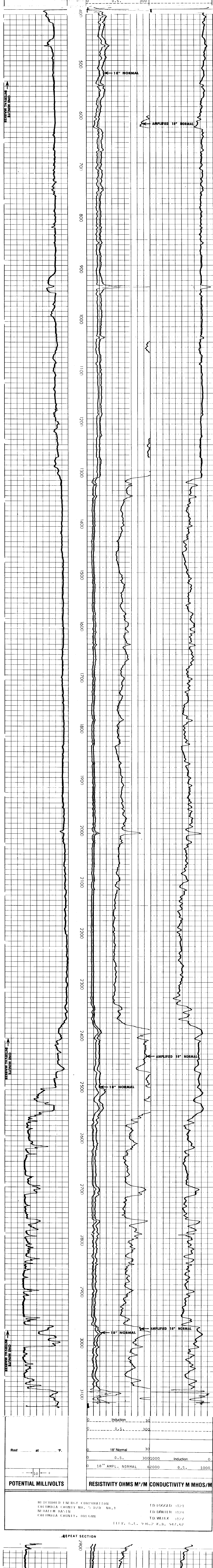
Dens.	Visc.	ph	Fluid Loss	ml

Source of Sample	R _m @ Meas. Temp.	R _w @ Meas. Temp.	R _{nc} @ Meas. Temp.

Source: R _m	R _w	R _{nc}

R _m @ BHT	R _w @ BHT	R _{nc} @ BHT
1.29 @ 117 °F	1.16 @ 117 °F	1.20 @ 117 °F

Welex does not guarantee the accuracy of any interpretation of log data, conversion of log data to physical rock parameters, or recommendations which may be given by Welex personnel to which may appear on the log or in any other form. Any user of such data, interpretations, conversions, or recommendations agrees that Welex is not responsible, except where due to gross negligence or willful misconduct, for any loss, damages, or expenses resulting from the use thereof.



REICHHOLD ENERGY CORPORATION
 COLUMBIA COUNTY NO. 5 R/D NO. 1
 NEHALEM BASIN
 COLUMBIA COUNTY, OREGON

FD LOGGED 1171
 TD DRILLER 1128
 TD WELX 1127
 ELEV. G.L. 936.2 K.B. 947.62

