



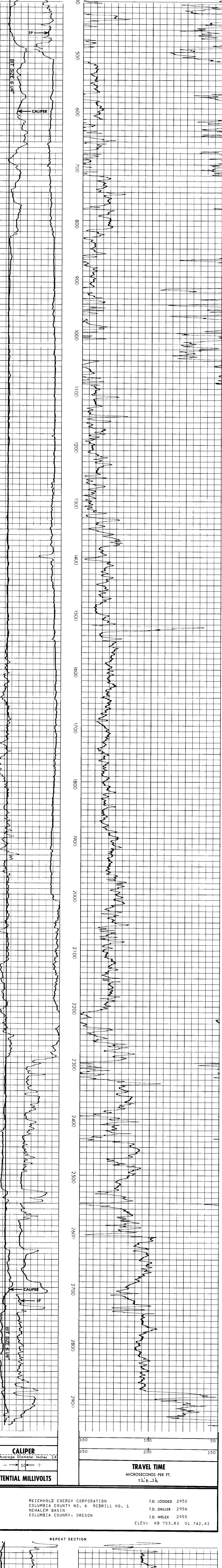
COMPANY REICHHOLD ENERGY CORPORATION
 WELL COLUMBIA COUNTY NO. 6
 FIELD NEHALEM BASIN
 COUNTY COLUMBIA STATE OREGON
 LOCATION 689' SOUTH & 66' WEST OF
 CENTER OF: (W.B. & M.)
 IEL
 DTP

Permanent Datum: KB
 Log Measured From: KB
 Drilling Measured From: KB
 Date: 8-3-79
 Run No.: 2956
 Depth - Driller: 2952
 Depth - Welex: 2952
 Bitm. Log Inter.: 492
 Casing - Driller: 7 @ 401
 Casing - Welex: 402
 Bit Size: 6 1/4
 Type Fluid in Hole: CAUSTIC
 Dens. Visc.: 74.5 @ 1.1 ml
 pH Fluid Loss: 10.0
 Source of Sample: 2.03 @ 98F
 R₁ @ Meas. Temp.: 2.02 @ 69F
 R₂ @ Meas. Temp.: 2.37 @ 68F
 Source R₁: MEAS LINED
 R₁ @ BHT: 1.58 @ 113F
 Time Since Circ.: 5 HOURS
 Max. Rec. Temp.: 113F @ BHT
 Equip. Location: 9430 I WDLNI
 Witnessed By: KENNEDY
 Recorded By: BRUER

Service Ticket No. 048891 Remarks: TIME-DEPTH-INTEGRATOR RECORDED ON 5" = 100' DEPTH SCALE.

Change in Mud Type or Additional Samples		SCALE CHANGES		
Date	Sample No.	Type Log	Depth	Scale Up Hole
				Scale Down Hole
Type Fluid in Hole				
Dens.	Visc.			
EQUIPMENT DATA				
R ₁ @ Meas. Temp.	R ₂ @ Meas. Temp.	Run No.	Tool Type and No.	Pad Type
R _{1c} @ Meas. Temp.	R _{2c} @ Meas. Temp.	ONE	C/AVL 13918	FREE
Other				
Source R ₁	R _{1c}			
R ₁ @ BHT	1.58 @ 113F			
R _{1c} @ BHT	1.24 @ 113F			
R ₂ @ BHT	1.39 @ 113F			

Welex does not guarantee the accuracy of any interpretation of log data, conversion of log data to physical rock parameters, or recommendations which may be given by Welex personnel or which may appear on the log or in any other form. Any user of such data, interpretations, conversions, or recommendations agrees that Welex is not responsible, except where due to gross negligence or willful misconduct, for any loss, damages, or expenses resulting from the use thereof.



REICHHOLD ENERGY CORPORATION
 COLUMBIA COUNTY NO. 6 REDRILL NO. 1
 NEHALEM BASIN
 COLUMBIA COUNTY, OREGON

T.D. LOGGED 2952
 T.D. DRILLER 2956
 T.D. WELEX 2955
 ELEV: KB 753.83 GL 742.41

