

INDUCTION • ELECTRIC LOG

COMPANY: REICHOLD ENERGY CORPORATION
WELL: COLUMBIA COUNTY NO. 6 REDRILL NO. 2
FIELD: NEHALEM BASIN
STATE: OREGON

LOCATION: 689' SOUTH & 64' WEST OF THE CLAV CENTER OF SECTION (M.B. & M.)
COUNTY: COLUMBIA
DIP: 0°

PERMANENT DIAMETER: 10"
LOG MEASURED FROM: K.B. OR 11.42' FROM PERM DIAMETER
DEPTH: 2614'

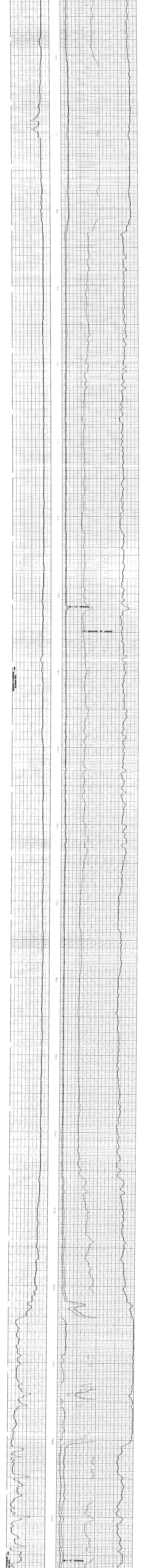
DATE: 11-14-53
LOGGERS: M. DRILLER, J. CLARK

Table with columns for Log No., Depth, Run No., Bottom, and Log Date. Includes data for 2614' depth.

Table with columns for Scale Changes, Type Log, and Equipment Data. Includes tool type 'ONE' and pad position 'FREE'.

Scale: 5" = 100'. Includes labels for Induction, 18" Normal, and 18" AMPL. NORMAL.

POTENTIAL MILLIVOLTS. Scale: 10 mV. Includes label 'ONE MINUTE INTERVAL MARKER'.



POTENTIAL MILLIVOLTS. Scale: 10 mV. Includes label 'ONE MINUTE INTERVAL MARKER'.

RESISTIVITY OHMS M²/M CONDUCTIVITY M MHOS/M. Scale: 18" Normal, 0.5, 300, 1000, Induction.

REICHOLD ENERGY CORPORATION, COLUMBIA COUNTY NO. 6 REDRILL NO. 2, NEHALEM BASIN, COLUMBIA COUNTY, OREGON. T.D. LOGGED 2614, T.D. DRILLER 2614, T.D. WELX 2620, ELEV: K3 753.83 GL 742.41

AFTER LOG. Includes handwritten numbers 113, 114, 116, 112, 111, 10, 9.