



COMPANY REICHHOLD ENERGY CORP.  
 WELL COLUMBIA COUNTY NO. 10  
 FIELD MIST - NEHALEM BASIN COUNTY COLUMBIA STATE OREG.  
 COMPANY REICHHOLD ENERGY CORPORATION  
 WELL COLUMBIA COUNTY NO. 10  
 FIELD MIST - NEHALEM BASIN COUNTY COLUMBIA STATE OREGON  
 Location: 1076' NORTH & 1065' EAST OF SOUTHWEST CORNER OF 3 Sec. 3 Twp. 6N Rpt. 5W C/DENS/N  
 Permanent Datum: GL Elev. 1089.22 Elev.: KB 1099.72  
 Log Measured From: KB 0R 10.5 Ft. Above Perm. Datum D.F.  
 Drilling Measured From: KB  
 Date: 10-5-79  
 Run No.: 2983  
 Depth - Welex: 2981  
 Btm. Log Inner: 2979  
 Top Log Inner: 440 @ 437 @  
 Casing - Driller: 7 @ 440 @  
 Casing - Welex: 440 @  
 Bit Size: 6 1/4  
 Type Fluid in Hole: LIQUID SULF  
 Dens. I Visc. 7.9 1.39  
 pH Fluid Loss 9.0 17.0 ml  
 Source of Sample: F1 1.60 60 °F  
 Run @ Meas. Temp: 1.50 60 °F  
 Run @ Meas. Temp: 3.90 60 °F  
 Source Run. from: MEASURED  
 Run @ BHT: 2.10 @ 109 °F  
 Max. Freq. Temp. 109 °F @ BHT  
 Equip. Location: B586 1 WBLND DOVE  
 Recorded By: MCBURNIE, FRY

Field Here

Service Ticket No. 049048 Remarks:

Date	Sample No.	Run No.	Tool Type	1	2	3	4
	Depth - Driller		DIP				
	Type Fluid in Hole		Tool Number	13101			
			Pad Type	FORXU			
			Correlated By				
			Computed By				
			Remarks:				
			TRANS. NO.	12613	MAND. NO.	12892	

Welex does not guarantee the accuracy of any interpretation of log data, conversion of log data to physical rock parameters, or recommendations which may be given by Welex personnel or which may appear on the log or in any other form. Any use of such data interpretations, conversions, or recommendations agrees that Welex is not responsible, except where due to gross negligence or willful misconduct, for any loss, damages, or expenses from the use thereof.

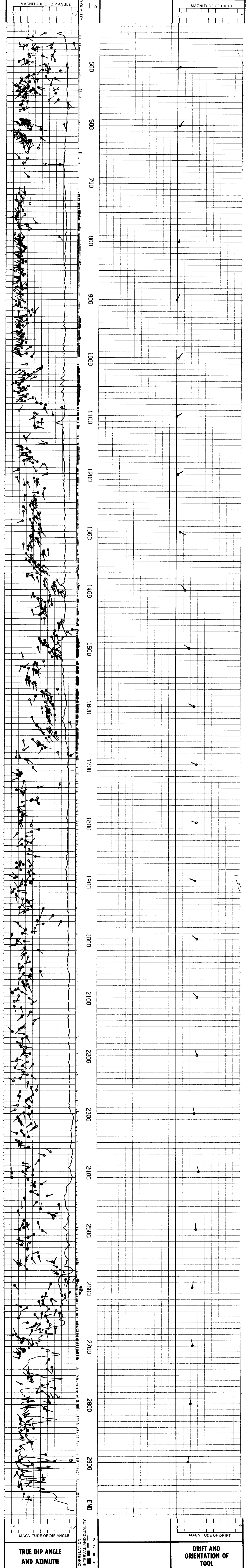
Magnetic Declination NORTH 20.5 EAST

TABLE OF CONSTANTS FOR DETERMINING VERTICAL DIFFERENCE AT VARIOUS DIP ANGLES

DIP ANGLES Degrees	CONSTANT	DIP ANGLES Degrees	CONSTANT	DIP ANGLES Degrees	CONSTANT	DIP ANGLES Degrees	CONSTANT
1	.0175	11	.194	21	.384	35	.700
2	.035	12	.213	22	.404	40	.839
3	.052	13	.231	23	.425	45	1.000
4	.070	14	.249	24	.445	50	1.192
5	.088	15	.268	25	.467	55	1.428
6	.105	16	.287	26	.487	60	1.732
7	.123	17	.306	27	.509	65	2.144
8	.141	18	.325	28	.531	70	2.748
9	.158	19	.344	29	.554	75	3.732
10	.176	20	.364	30	.577	80	5.671

Vertical difference in feet is obtained by multiplying the constant for any given dip angle by the horizontal distance in feet.  
 Example: Dip angle 10°. Horizontal distance 440 ft.  
 Vertical difference = .176 x 440 = 77.44

GRAPHIC PRESENTATION



REICHHOLD ENERGY CORPORATION  
 COLUMBIA COUNTY NO. 10  
 MIST - NEHALEM BASIN  
 COLUMBIA COUNTY, OREGON

T.D. LOGGED 2979  
 T.D. DRILLER 2983  
 T.D. WELEX 2981  
 ELEV.: KB 1099.72 GL 1089.22