

**DUAL INDUCTION
GUARD LOG**
WITH 2" LINEAR CORRELATION LOG

COMPANY REICHHOLD ENERGY CORP.
WELL COLUMBIA COUNTY NO. 10
FIELD MIST-NEHALEM
COUNTY COLUMBIA STATE OREGON
LOCATION 1976' NORTH & 1065' EAST OF SOUTHWEST CORNER OF 1/4 C/DENS/N
DIP

COMPANY REICHHOLD ENERGY CORPORATION
WELL COLUMBIA COUNTY NO. 10
FIELD MIST - NEHALEM BASIN

COUNTY COLUMBIA STATE OREGON
Location 1976' NORTH & 1065' EAST OF SOUTHWEST CORNER OF 1/4 C/DENS/N
DIP

Permament Datum: 6L 1089.22
Log Measured From: KB
Drilling Measured From: KB
Date: 10-5-79
Run No: DNE
Depth - Driller: 2983
Btm. Log Inter: 2979
Top Log Inter: 440
Casing - Driller: 440 @ 437
Casing - Welex: 440 @ 437
Bit Size: 6.1/4
Type Fluid in Hole: LIGHT SULF

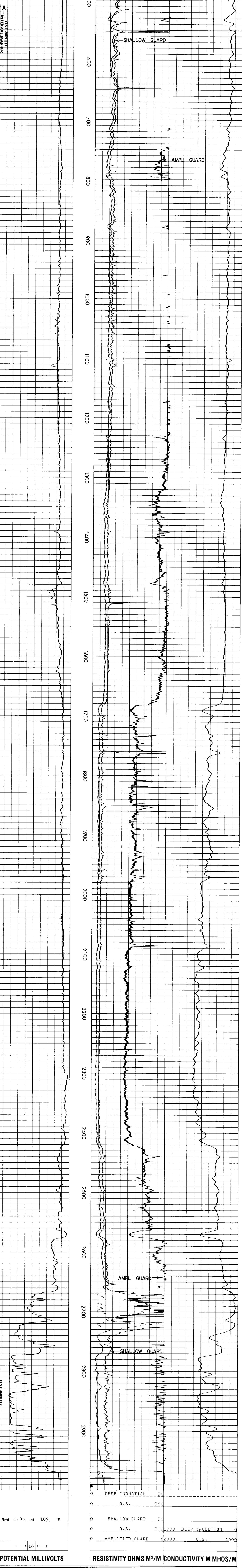
Drift 1/8" @ 17.0 mi
Drift 1/8" @ 17.0 mi
R₁₀ @ Meas. Temp: 1.96 @ 109 F
R₃₀ @ Meas. Temp: 1.96 @ 109 F
R₆₀ @ Meas. Temp: 1.96 @ 109 F
R₁₀₀ @ Meas. Temp: 1.96 @ 109 F
R₁₅₀ @ Meas. Temp: 1.96 @ 109 F
R₂₀₀ @ Meas. Temp: 1.96 @ 109 F
R₃₀₀ @ Meas. Temp: 1.96 @ 109 F
R₄₀₀ @ Meas. Temp: 1.96 @ 109 F
R₅₀₀ @ Meas. Temp: 1.96 @ 109 F
R₆₀₀ @ Meas. Temp: 1.96 @ 109 F
R₇₀₀ @ Meas. Temp: 1.96 @ 109 F
R₈₀₀ @ Meas. Temp: 1.96 @ 109 F
R₉₀₀ @ Meas. Temp: 1.96 @ 109 F
R₁₀₀₀ @ Meas. Temp: 1.96 @ 109 F
R₁₁₀₀ @ Meas. Temp: 1.96 @ 109 F
R₁₂₀₀ @ Meas. Temp: 1.96 @ 109 F
R₁₃₀₀ @ Meas. Temp: 1.96 @ 109 F
R₁₄₀₀ @ Meas. Temp: 1.96 @ 109 F
R₁₅₀₀ @ Meas. Temp: 1.96 @ 109 F
R₁₆₀₀ @ Meas. Temp: 1.96 @ 109 F
R₁₇₀₀ @ Meas. Temp: 1.96 @ 109 F
R₁₈₀₀ @ Meas. Temp: 1.96 @ 109 F
R₁₉₀₀ @ Meas. Temp: 1.96 @ 109 F
R₂₀₀₀ @ Meas. Temp: 1.96 @ 109 F
R₂₁₀₀ @ Meas. Temp: 1.96 @ 109 F
R₂₂₀₀ @ Meas. Temp: 1.96 @ 109 F
R₂₃₀₀ @ Meas. Temp: 1.96 @ 109 F
R₂₄₀₀ @ Meas. Temp: 1.96 @ 109 F
R₂₅₀₀ @ Meas. Temp: 1.96 @ 109 F
R₂₆₀₀ @ Meas. Temp: 1.96 @ 109 F
R₂₇₀₀ @ Meas. Temp: 1.96 @ 109 F
R₂₈₀₀ @ Meas. Temp: 1.96 @ 109 F
R₂₉₀₀ @ Meas. Temp: 1.96 @ 109 F

Service Ticket No 049048		Remarks	
Change in Mud Type or Additional Samples		SCALE CHANGES	
Date Sample No.	Type Log	Depth	Scale Up Hole Scale Down Hole
Depth - Driller			
Type Fluid in Hole			
Dens. Visc.			
ph Fluid Loss			
Source of Sample		EQUIPMENT DATA	
R ₁₀ @ Meas. Temp	@ F	Run No	Tool Type and No Pad Type Tool Position Other
R ₃₀ @ Meas. Temp	@ F	ONE	DIGL 21675 CENT
R ₆₀ @ Meas. Temp	@ F		
R ₁₀₀ @ Meas. Temp	@ F		
Source: R ₁₀ R ₃₀			
R ₁₀ @ BHT	2.12 @ 109 F		
R ₃₀ @ BHT	1.96 @ 109 F		
R ₆₀ @ BHT	2.20 @ 109 F		

Welex does not guarantee the accuracy of any interpretation of log data, conversion of log data to physical rock parameters, or recommendations which may be given by Welex personnel or which may appear on the log or in any other form. Any user of such data, interpretations, conversions, or recommendations agrees that Welex is not responsible except where due to gross negligence or willful misconduct for any loss, damages, or expenses resulting from the use thereof.

2" = 100'

POTENTIAL MILLIVOLTS	RESISTIVITY OHMS M ² /M	CONDUCTIVITY M MHOS/M
← 10 →	0 SHALLOW GUARD 30	1000 DEEP INDUCTION 0
	0 0.S. 300	2000 0.S. 1000
	0 AMPLIFIED GUARD 6	
	0 DEEP INDUCTION 30	
	0 0.S. 300	



POTENTIAL MILLIVOLTS	RESISTIVITY OHMS M ² /M	CONDUCTIVITY M MHOS/M
← 10 →	0 SHALLOW GUARD 30	1000 DEEP INDUCTION 0
	0 0.S. 300	2000 0.S. 1000
	0 AMPLIFIED GUARD 62000	
	0 DEEP INDUCTION 30	
	0 0.S. 300	

REICHHOLD ENERGY CORPORATION
COLUMBIA COUNTY NO. 10
MIST-NEHALEM BASIN
COLUMBIA COUNTY, OREGON
T.D. LOGGED 2979
T.D. DRILLER 2983
T.D. WELEX 2981
ELEV: KB 1099.72 6L 1089.22

REPEAT SECTION

