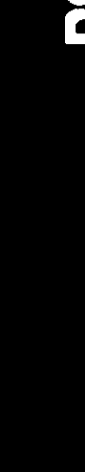


0011-10-65

5th Lumber

2" DUAL INDUCTION-SFL



COMPANY: REICHHOLD ENERGY CORPORATION
WELL: "COLUMBIA COUNTY" #11-10
FIELD: MIST
COUNTY: COLUMBIA
STATE: OREGON
LOCATION: U.S.A. & 496.5' E FROM
NORTHWEST CORNER OF
SEC: 10
TWP: 6N
RGE: 5W

PERMANENT DATUM: GL
ELEV. OF PERM. DATUM: 937.0 F
LOG MEASURED FROM: ABOVE PERM. DATUM
DRLG. MEASURED FROM: KB

DATE: 27 SEP 84
RUN NO: 1

DEPTH-DRILLER: 3182.0 F
DEPTH-LOGGER: 3177.0 F
BIT. LOG INTERVAL: 3171.0 F
TOP LOG INTERVAL: 442.0 F
CASING-DRILLER: 431 F
CASING-LOGGER: 442 F
CASING: 8 5/8"
BIT SIZE: 7 7/8"
BIT DEPTH: 3182 F

OTHER SERVICES-
BHC
HDT

ELEVATIONS-
KB: 937.0 F
DT: 937.0 F

PROGRAM: TAP
TAB: 2
SERV: C
DRDFA: ND
498550

TYPE FLUID IN HOLE: GEL-LIGNO
DENSITY: 9.6 LB/G
VISCOSITY: 52.0 S
PHI: 9.0
FLUID LOSS: 5.4 C3
SOURCE OF SAMPLE: MUDPIT
RM: 2.930 DHMM AT 64.0 DEGF
RMF: 2.730 DHMM AT 60.0 DEGF
RMC: 2.880 DHMM AT 60.0 DEGF
SOURCE RMF/RMC: MEASURED/MEASURED
RM AT BHT: 1.932 DHMM AT 97.0 DEGF
RMF AT BHT: 1.758 DHMM AT 97.0 DEGF
RMC AT BHT: 1.855 DHMM AT 97.0 DEGF

TIME CIRC. STOPPED: 06:30 9-27
TIME LOGGER ON BTM.: 09:40 9-27
MAX. REC. TEMP: 97.0 DEGF
LOGGING UNIT NO: 8128
LOGGING UNIT LOC: SACRAMENTO
RECORDED BY: PILCH
WITNESSED BY: THOMAS

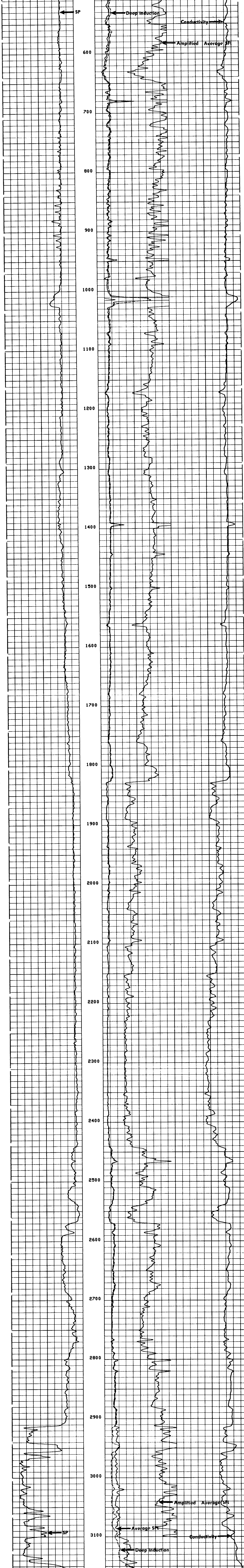
REMARKS:
CHLORIDES = 400 PPM

EQUIPMENT NUMBERS-
DIS-EC 567 DIC-DA 658 SLS-RC 525 SLC-FA 1468
MCD-DA 1237 IEM-BD 304 SLH-CA 138

ALL INTERPRETATIONS ARE OPINIONS BASED ON INFERENCES FROM ELECTRICAL OR OTHER MEASUREMENTS AND WE CANNOT, AND DO NOT GUARANTEE THE ACCURACY OR CORRECTNESS OF ANY INTERPRETATIONS, AND WE SHALL NOT, EXCEPT IN THE CASE OF GROSS OR WILLFUL NEGLIGENCE ON OUR PART, BE LIABLE OR RESPONSIBLE FOR ANY LOSS, COSTS, DAMAGES OR EXPENSES INCURRED OR SUSTAINED BY ANYONE RESULTING FROM ANY INTERPRETATION MADE BY ANY OF OUR OFFICERS, AGENTS OR EMPLOYEES. THESE INTERPRETATIONS ARE ALSO SUBJECT TO OUR GENERAL TERMS AND CONDITIONS AS SET OUT IN OUR CURRENT PRICE SCHEDULE.

FILE 2 27-SEP-84 10:34
DATA ACQUIRED 27-SEP-84 10:23

ILD (DHMM)	30.000	CILD(MMHO)	0.0
SFLA(DHMM)	6.0000		
SP (MV)	0.0		



FILE 2 27-SEP-84 10:29
DATA ACQUIRED 27-SEP-84 09:39

ILD (DHMM)	30.000	CILD(MMHO)	0.0
SFLA(DHMM)	6.0000		
SP (MV)	0.0		

SENSOR MEASURE POINT TO TOOL ZERO

CBL	43.9 FEET	AMPL	43.9 FEET
TT3	40.1 FEET	DTCL	200 US
TT1	42.9 FEET	TT2	43.9 FEET
CALI	31.8 FEET	SRAT	41.4 FEET
SFL	6.4 FEET	ILD	9.4 FEET
SP	2.5 FEET	ILM	5.7 FEET
TENS	2.5 FEET	SPAR	2.5 FEET
NDIS	35.6 FEET		

PARAMETERS

NAME	VALUE	UNIT	NAME	VALUE	UNIT
MSV1	MF1		DHSL	16	
DSIM	5	US	DDEL	200	US
CDS	100.000		DTM	512	
DTF	189.000	US/F	DSEC	56.0000	US/F
SBR	1.00000	DHMM	MSEC	5.80000	MMHO
FPHI	SPHI		BHS	OPEN	
BS	7.87500	IN	DD	0.0	F
PP	NDRM				

TAPE NOT MADE