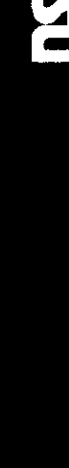


2011-10-16

Schlumberger

2" BHC SONIC



OTHER SERVICES-  
DIL  
HDT

COMPANY: REICHHOLD ENERGY CORPORATION  
WELL: "COLUMBIA COUNTY" #11-10  
FIELD: MIST  
COUNTY: COLUMBIA  
STATE: OREGON  
NH: 4221 N.S. & 496 ST. E FROM  
LD: 4221 N.S. & 496 ST. E FROM  
COORDIN: NORTHEAST CORNER OF  
SEC: 10 TWP: 6N RGE: 5W

PERMANENT DATUM: GL  
ELEV. OF PERM. DATUM: 937.0 F  
ELEVATIONS-  
ELEV. OF PERM. DATUM: KB: 948.0 F  
LOG MEASURED FROM: DF: 947.0 F  
11.0 F ABOVE PERM. DATUM  
GL: 937.0 F

DATE: 27 SEP 84  
RUN NO: 1

DEPTH-DRILLER: 3188.0 F  
DEPTH-LOGGERS: 3188.0 F  
BENTH-LOG INTERVAL: 3188.0 F  
TOP LOG INTERVAL: 443.0 F  
CASING-DRILLER: 431 F  
CASING-LOGGERS: 8 5/8"  
BIT SIZE: 7 7/8"  
BIT LENGTH: 3188 F

PROGRAM  
TAPE NO:  
SERV. NO:  
ORDER NO:  
432550

TYPE FLUID IN HOLE: GEL-LIGNO  
DENSITY: 9.6 LB/G  
VISCOSITY: 52.0 S  
PH: 9.0  
FLUID LOSS: 5.4 C3  
SOURCE OF SAMPLE: MUDPIT  
RM: 2.830 OHMM AT 64.0 DEGF  
RMF: 2.730 OHMM AT 60.0 DEGF  
RMC: 2.880 OHMM AT 60.0 DEGF  
SOURCE RMF/RMC: MEASURED/MEASURED  
RM AT BHT: 1.932 OHMM AT 97.0 DEGF  
RMF AT BHT: 1.758 OHMM AT 97.0 DEGF  
RMC AT BHT: 1.855 OHMM AT 97.0 DEGF  
TIME CIRC. STOPPED: 06:30 9-27  
TIME LOGGER ON BTM.: 09:40 9-27  
MAX. REC. TEMP: 97.0 DEGF  
LOGGING UNIT NO: 8128  
LOGGING UNIT LOC: SACRAMENTO  
RECORDED BY: PILCH  
WITNESSED BY: THOMAS

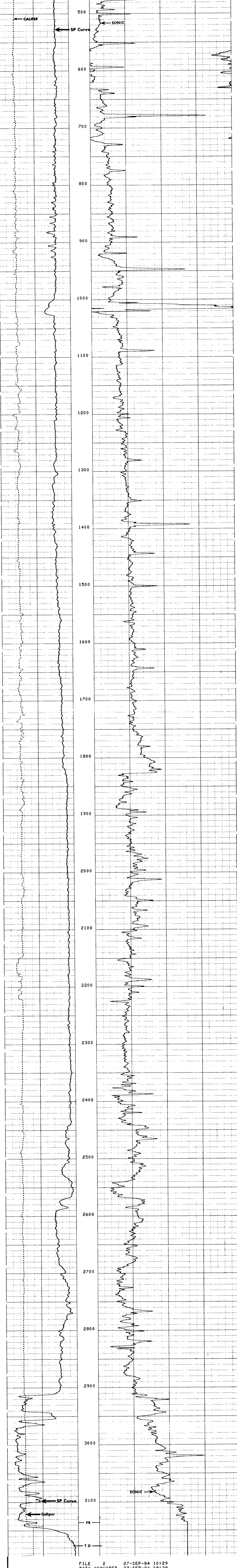
REMARKS:  
CHLORIDES = 400 PPM

EQUIPMENT NUMBERS-  
DIS-EC 567 DIC-DA 658 SLS-RC 525 SLC-FA 1468  
MCD-DA 1237 IEM-BD 304 SLM-CA 138

ALL INTERPRETATIONS ARE OPINIONS BASED ON INFERENCES FROM ELECTRICAL OR OTHER MEASUREMENTS AND WE CANNOT, AND DO NOT GUARANTEE THE ACCURACY OR CORRECTNESS OF ANY INTERPRETATIONS, AND WE SHALL NOT, EXCEPT IN THE CASE OF GROSS OR WILLFUL NEGLIGENCE ON OUR PART, BE LIABLE OR RESPONSIBLE FOR ANY LOSS, COSTS, DAMAGES OR EXPENSES INCURRED OR SUSTAINED BY ANYONE RESULTING FROM ANY INTERPRETATION MADE BY ANY OF OUR OFFICERS, AGENTS OR EMPLOYEES. THESE INTERPRETATIONS ARE ALSO SUBJECT TO OUR GENERAL TERMS AND CONDITIONS AS SET OUT IN OUR CURRENT PRICE SCHEDULE.

FILE 2 27-SEP-84 10:36  
DATA ACQUIRED 27-SEP-84 10:23

CALI (IN.) 6.0000 16.000  
SP (MV) -100.0 0.0 DT (US/F) 150.00 50.000



FILE 2 27-SEP-84 10:29  
DATA ACQUIRED 27-SEP-84 09:39

CALI (IN.) 6.0000 16.000  
SP (MV) -100.0 0.0 DT (US/F) 150.00 50.000

SENSOR MEASURE POINT TO TOOL ZERO

CBL 43.9 FEET	AMPL 43.9 FEET
TT3 40.1 FEET	TT4 39.1 FEET
TT1 42.9 FEET	SRAT 43.9 FEET
CALI 31.8 FEET	ILD 9.4 FEET
SFL 6.4 FEET	ILM 5.7 FEET
SP 2.5 FEET	SPAR 2.5 FEET
TENS 2.5 FEET	
NOIS 35.6 FEET	

PARAMETERS

NAME	VALUE	UNIT	NAME	VALUE	UNIT
MSV1	HF1		DWS	16	
DSIN	5	US	DDEL	200	US
CDTS	100.000		DWCO	512	
DTF	189.000	US/F	DTM	56.0000	US/F
SBR	1.00000	OHMM	DSEC	7.70000	MMHD
FPHI	SPHI		MSEC	5.80000	MMHD
BS	7.87500	IN	BHS	OPEN	
PP	NDRM		DD	0.0	F

TAPE NOT MADE