



COMPENSATED
ACOUSTIC VELOCITY
LOG

2" = 100'

COMPANY REICHHOLD ENERGY CORPORATION
WELL COLUMBIA COUNTY 11-33
FIELD MIST
COUNTY COLUMBIA STATE OREGON
RECEIVED PTD
FEB 24 1982
Location 2933 SOUTH & 324' EAST OF THE NORTHWEST CORNER OF: ' Other Services
DIP

Permanent Datum G.L. OR Elev. 956.18
Log Measured From K.B. Elev. 956.18
Drilling Measured From K.B. Elev. 956.18
Date 7-30-81
Run No. DNE
Depth—Order 2737
Depth—Meter 2738
Bin Log Inner 2733
Top Log Inner 410
Casing—Dip 7.10 @ 398
Casing—Meter 410
Bit Size 6 1/4
Type Fluid in Hole LIQUID SULF.

Dens. Visc. 9.3 147
pH Fluid Loss 10 14.0 ml
Source of Sample CIRCULATED
R₁₀ @ Meas. Temp. 4.00 @ 60 °F
R₂₀ @ Meas. Temp. 3.80 @ 69 °F
R₃₀ @ Meas. Temp. 4.25 @ 60 °F
Source R₁₀ R₂₀ R₃₀ MESSURED
R₁₀ @ BHT 2.18 @ 110 °F
R₂₀ @ BHT 2.18 @ 110 °F
R₃₀ @ BHT 2.31 @ 110 °F
Time Since Circ. 2 1/2 HRS.
Max. Meas. Temp. 110 °F @ BHT
Equip. Location 8566 I WOODLAND
Recorded By J. PARMELEE
Witnessed By W. BRUER

Fold Here

Service Ticket No 057053 Remarks

Change in Mud Type or Additional Samples		SCALE CHANGES			
Date	Sample No.	Type Log	Depth	Scale Up Hole	Scale Down Hole
Type Fluid in Hole					

Dens. Visc.		EQUIPMENT DATA			
Run No.	Tool Type and No.	Pad Type	Tool Position	Other	
ONE	AVL		N/A		

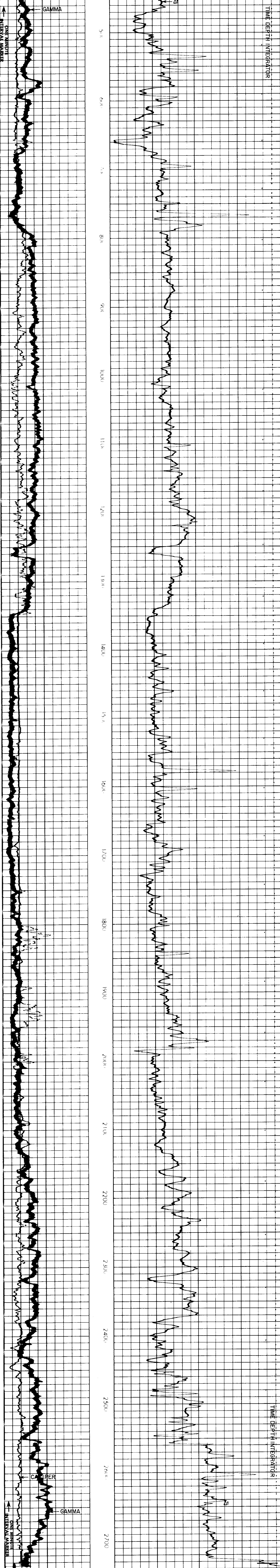
Welex does not guarantee the accuracy of any interpretation of log data, conversion of log data to physical rock parameters, or recommendations which may be given by Welex personnel or which may appear on the log or in any other form. Any user of such data, interpretations, conversions, or recommendations agrees that Welex is not responsible, except where due to gross negligence or willful misconduct, for any loss, damages, or expenses resulting from the use thereof.

2" = 100'

TRAVEL TIME		
MICROSECONDS PER FT.		
T ² -R ² -R:		
170	120	70
270	220	170

GAMMA	
API Gamma Ray Units	
0	100

CALIPER	
Average Diameter Inches	
4	14



TRAVEL TIME		
MICROSECONDS PER FT.		
T ² -R ² -R:		
170	120	70
270	220	170

CALIPER	
Average Diameter Inches	
4	14

GAMMA	
API Gamma Ray Units	
0	100

REICHHOLD ENERGY CORPORATION
COLUMBIA COUNTY 11-33
MIST
COLUMBIA COUNTY, OREGON

T.D. LOGGED 2733
T.D. DRILLER 2737
T.D. WELLER 2738
ELEV: KB 967.58 GL 956.18