

CE 12-09-65 RJD1



2" = 100'

**DUAL INDUCTION
GUARD LOG**

COMPANY: REICHHOLD ENERGY CORPORATION WELL: COLUMBIA COUNTY 12-9 REDRILL NO.1 FIELD: MIST, NEHALEM BASIN County: COLUMBIA State: OR		COMPANY: REICHHOLD ENERGY CORPORATION WELL: COLUMBIA COUNTY 12-9 REDRILL NO.1 FIELD: MIST, NEHALEM BASIN County: COLUMBIA State: OR	
Location: 755 NORTH & 126' EAST FROM THE C/AVL WEST 1/4 CORNER OF: Other Services:		Location: COLUMBIA STATE OREGON Other Services:	
Date: 3-1-82 Log Measured From: K.B. OR Elev: 734.2 Drilling Measured From: K.B. OR Elev: 734.2 Log Measured From: K.B. OR Elev: 734.2 Drilling Measured From: K.B. OR Elev: 734.2		Date: 3-1-82 Log Measured From: K.B. OR Elev: 734.2 Drilling Measured From: K.B. OR Elev: 734.2 Log Measured From: K.B. OR Elev: 734.2 Drilling Measured From: K.B. OR Elev: 734.2	
Run No.: ONE Depth - Driller: 2914 Depth - Wever: 2914 Bottom Driller: 2912		Run No.: ONE Depth - Driller: 2914 Depth - Wever: 2914 Bottom Driller: 2912	
Tool Bit: 405 @ 405 Case: 405 @ 405 Bl. Size: 6 1/4		Tool Bit: 405 @ 405 Case: 405 @ 405 Bl. Size: 6 1/4	
Type Fluid in Hole: LIQUID Dens. Type: LIQUID PH Fluid Loss: 10.1 15.3 Source of Sample: CIRCULATED R_m @ Meas. Temp.: 1.39 @ 74°F R_{nc} @ Meas. Temp.: 1.81 @ 64°F R_m @ Meas. Temp.: 2.10 @ 52°F R_{nc} @ Meas. Temp.: 1.32 @ 100°F Time Since Circ.: 1.32 @ 100°F Max. Rec. Temp.: 287.6 @ WOODLAND Equip. Location: 287.6 @ WOODLAND Recorded By: A. FOLLERER, J. FARWELL Witnessed By: W. ALBER		Type Fluid in Hole: LIQUID Dens. Type: LIQUID PH Fluid Loss: 10.1 15.3 Source of Sample: CIRCULATED R_m @ Meas. Temp.: 1.39 @ 74°F R_{nc} @ Meas. Temp.: 1.81 @ 64°F R_m @ Meas. Temp.: 2.10 @ 52°F R_{nc} @ Meas. Temp.: 1.32 @ 100°F Time Since Circ.: 1.32 @ 100°F Max. Rec. Temp.: 287.6 @ WOODLAND Equip. Location: 287.6 @ WOODLAND Recorded By: A. FOLLERER, J. FARWELL Witnessed By: W. ALBER	

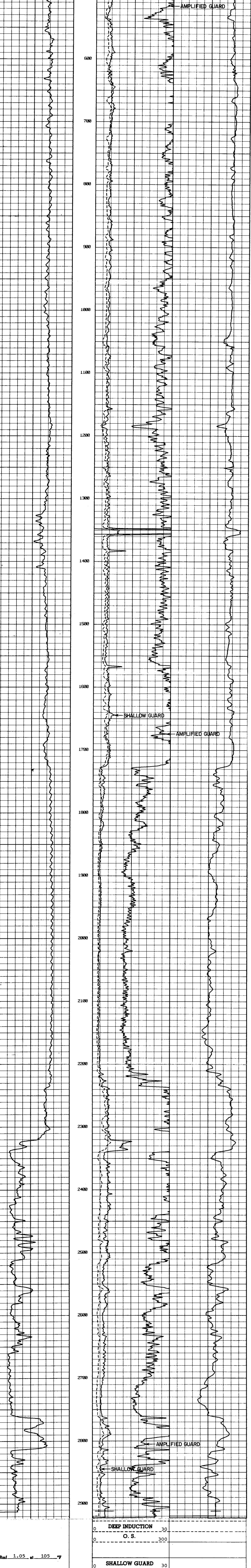
Service Ticket No. 116053 Remarks: DRAFTED BY: B. CASTRO

Change in Mud Type or Additional Samples		SCALE CHANGES	
Date	Sample No.	Type Log	Depth
Type Fluid in Hole		Scale Up Hole	Scale Down Hole

EQUIPMENT DATA			
Run No.	Tool Type and No.	Pad Type	Tool Position
ONE	DIG 98853		N/A
	SG 26297		

Dens. Visc. ph | Fluid Loss
 R_m @ Meas. Temp. Source of Sample
 R_{nc} @ Meas. Temp.
 R_m @ Meas. Temp.
 R_{nc} @ Meas. Temp.
 Source: R_m R_{nc}
 R_m @ BHT 1.12 @ 105°F
 R_{nc} @ BHT 1.05 @ 105°F
 R_m @ BHT 1.05 @ 105°F
 R_{nc} @ BHT 1.04 @ 105°F

Welex does not guarantee the accuracy of any interpretation of log data, conversion of log data to physical rock parameters, or recommendations which may be given by Welex personnel or which may appear on the log or in any other form. Any user of such data, interpretations, conversions, or recommendations agrees that Welex is not responsible except where due to gross negligence or willful misconduct, for any loss, damages, or expenses resulting from the use thereof.



Rmf 1.05 at 105 °F

POTENTIAL MILLIVOLTS
 -- 10 +
 Rmf at °F

REICHHOLD ENERGY CORPORATION
 COLUMBIA COUNTY, 12-9 REDRILL NO.1
 MIST, NEHALEM BASIN
 COLUMBIA COUNTY, OREGON
 T.D. LOGGED 2912
 T.D. DRILLER 2914
 T.D. WELEX 2914
 ELEV: KB 744.7 6L 734.2