

20 12-09-65 4 PD1



**COMPENSATED  
ACOUSTIC VELOCITY  
LOG**

COMPANY REICHHOLD ENERGY CORPORATION  
WELL COLUMBIA CO. 12-9  
FIELD MIST NEHALEM BASIN  
COUNTY COLUMBIA STATE OREGON  
LOCATION 795' NORTH AND 125' EAST FROM THE WEST QUARTER CORNER OF:  
DUAL IND. D1P

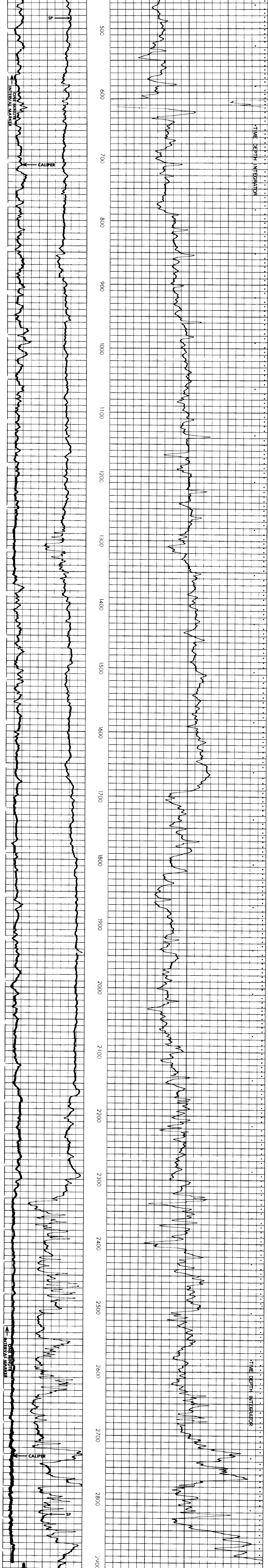
PERMITS: G.L. 734.2, K.B. 744.7  
LOG MEASURED FROM: K.B. D.F. 744.2  
DATE: 9-20-80  
DEPTH-DRILLER: 2918  
DEPTH-WELEX: 2908  
BITM LOG INTER: 404  
TOP LOG INTER: 404  
CASING-DRILLER: 7  
CASING-WELEX: 404

TYPE FLUID IN HOLE: LIQNG-SULF  
BIT SIZE: 6 1/4  
DENS. VISC. PH FLUID LOSS: 77 1.40  
SOURCE OF SAMPLE: CIRCULATED  
R<sub>m</sub> @ MEAS. TEMP.: 2.5 @ 68 °F  
R<sub>nk</sub> @ MEAS. TEMP.: 1.8 @ 66 °F  
SOURCE R<sub>m</sub> / R<sub>nk</sub>: MEASURED  
R<sub>m</sub> @ BHT: 1.57 @ 108 °F  
R<sub>nk</sub> @ BHT: 1.58 @ 108 °F  
R<sub>nk</sub> BHT: 1.10 @ 108 °F

Change in Mud Type or Additional Samples		SCALE CHANGES			EQUIPMENT DATA					
Date	Sample No.	Type Log	Depth	Scale Up Hole	Scale Down Hole	Run No.	Tool Type and No.	Pad Type	Tool Position	Other

2" = 100'

POTENTIAL MILLIVOLTS  
CALIPER  
5 Average Diameter Inches 15



POTENTIAL MILLIVOLTS  
CALIPER  
5 Average Diameter Inches 15

REICHHOLD ENERGY CORPORATION  
COLUMBIA COUNTY 12-9  
MIST NEHALEM BASIN  
COLUMBIA COUNTY, OREGON  
T.D. LOGGED 2908  
T.D. DRILLER 2918  
T.D. WELEX 2914  
ELEV. G.L. 734.2 K.B. 744.5