

02-12-09-65 + 201



2"100'
WITH 2" LINEAR CORRELATION LOG

**DUAL INDUCTION
GUARD LOG**

COMPANY REICHHOLD ENERGY CORP.
WELL COL. COUNTY 12-9
FIELD MIST NEHALEM BASIN
COUNTY COLUMBIA STATE OREGON
Location 795' NORTH AND 1267' EAST
FROM THE WEST QUARTER
CORNER OF:
C/A/V/L
DIP

COMPANY REICHHOLD ENERGY CORPORATION
WELL COLUMBIA COUNTY 12-9
FIELD MIST NEHALEM BASIN
COUNTY COLUMBIA STATE OREGON

Permian Datum: G.L. 734.2 Elev. KB 744.7
Log Measured From: K.B. 10.5 Elev. D.F. 734.2
Drilling Measured From: K.B. Elev. G.L. 734.2

Date: 9-20-80
Run No.: ONE
Depth-Driller: 2918
Depth-Welex: 2914
Bim. Log Inter.: 2912

Top Log Inter.: 404
Casing-Driller: 7 @ 405
Casing-Welex: 404 @ 405

BI Size: 6 1/4
Type Fluid in Hole: LIGNO-SULF

Dens. Visc.: 77 @ 40
pH | Fluid Loss: 9.0 @ 15.0 ml
Source of Sample: CIRCULATED
R_m @ Meas. Temp.: 2.50 @ 68 °F
R_m @ Meas. Temp.: 2.60 @ 66 °F
R_m @ Meas. Temp.: 1.80 @ 66 °F
Source: R_m R_{mc}: MEASURED
R_m @ BHT: 1.57 @ 108°F
R_m @ BHT: 1.58 @ 108°F
R_{mc} @ BHT: 1.10 @ 108°F

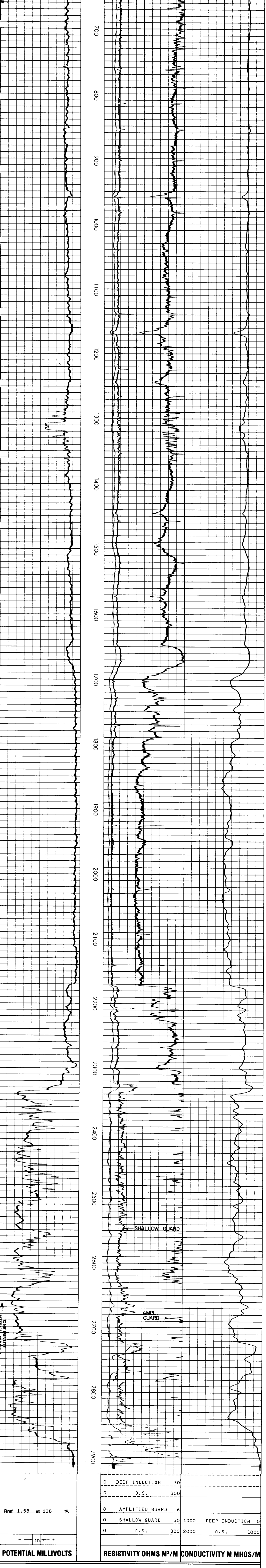
Time Since Circ.: 2 HOURS
Max. Rec. Temp.: 108°F @ 1100'
Equip. Location: 2876 MILDEN
Recorded By: FRY
Witnessed By:

Service Ticket No. 055215
Remarks:

Change in Mud Type or Additional Samples		Type Log	Depth	SCALE CHANGES	Scale Up Hole	Scale Down Hole
Date	Sample No.					
Depth-Driller						
Type Fluid in Hole						

EQUIPMENT DATA		Run No.	Tool Type and No.	Pad Type	Tool Position	Other
R _m @ Meas. Temp.	@ °F	ONE	24026		1 1/2 S, 10	
R _m @ Meas. Temp.	@ °F					
Source: R _m R _{mc}						
R _m @ BHT	1.57 @ 108°F					
R _m @ BHT	1.58 @ 108°F					
R _{mc} @ BHT	1.10 @ 108°F					

Welex does not guarantee the accuracy of any interpretation of log data, conversion of log data to physical rock parameters, or recommendations which may be given by Welex personnel or which may appear on the log or in any other form. Any user of such data, interpretations, conversions, or recommendations agrees that Welex is not responsible, except where due to gross negligence or willful misconduct, for any loss, damages, or expenses resulting from the use thereof.



Rmf 1.58 at 108 °F.

REICHHOLD ENERGY CORPORATION
COLUMBIA COUNTY 12-9
MIST NEHALEM BASIN
COLUMBIA COUNTY, OREGON

T.D. LOGGED 2912
T.D. DRILLER 2918
T.D. WELEX 2914
ELEV. G.L. 734.2 K.B. 744.7