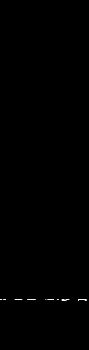


Schlumberger

DUAL INDUCTION-SFL 2"



COMPANY: REICHHOLD ENERGY CORPORATION

WELL: COLUMBIA COUNTY #13-1 RD#1

FIELD: MIST

COUNTRY: COLUMBIA

STATE: OREGON

LOCATION: 1393' NORTH & 1252' EAST

SEC: 1

DF SOUTHWEST CORNER DF

SEC: 1

DF SOUTHWEST TWP: 6N

RGE: S4

PERMANENT DATUM: GL

ELEV. OF PERM. DATUM: 1163.2'

LOG MEASURED FROM: KB

DRUG. MEASURED FROM: KB

DATE: 9 May 82

RUN NO: 1

DEPTH-DRILLER: 3028.0'

DEPTH-LOG: 3009.0'

TOP LOG INTERVAL: 437.0'

CASING-DRILLER: 436'

CASING: 7" 437'

BIT SIZE: 6.25

OTHER SERVICES-
BHC
HIT

PROGRAM
TAPE NO:
SERIAL NO:
SERVICE
DRGR NO:
E05640

ELEVATIONS-
KB: 1174.6'
DF: 1163.2'

TYPE FLUID IN HOLE: GEL-WATER
DENSITY: 11.5 LB/G
VISCOSITY: 45.0 S
PH: 9.5
FLUID LOSS: 6.5 CC
SOURCE OF SAMPLE: MUD PIT
RM: 6.550 DHMM AT 58.0 DF
RMC: 6.930 DHMM AT 45.0 DF
SOURCE RMF/RMC: 4.118 DHMM AT 45.0 DF
RM AT BHT: MEASURED/CALCULATED
RMC AT BHT: 5.191 DHM AT 75.0 DF
RMC AT BHT: 4.394 DHM AT 75.0 DF
RMC AT BHT: 2.611 DHM AT 75.0 DF

TIME CIRC. STOPPED: 0730
TIME LOGGER ON BTH.: 1030

MAX. REC. TEMP: 75.0 DF

LOGGING UNIT NO: 8216
LOGGING UNIT LOC: SACRAMENTO
RECORDED BY: COLLINS
WITNESSED BY: BRUER

REMARKS:

EQUIPMENT NUMBERS-

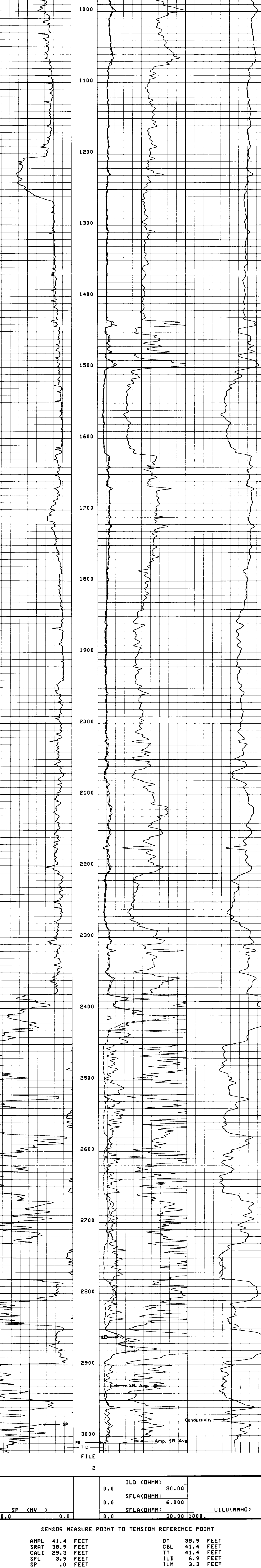
DIS 1181 DIC 1149 IEM 232

ALL INTERPRETATIONS ARE OPINIONS BASED ON INFERENCES FROM ELECTRICAL OR OTHER MEASUREMENTS AND WE CAN NOT, AND DO NOT GUARANTEE THE ACCURACY OR CORRECTNESS OF ANY INTERPRETATIONS, AND WE SHALL NOT, EXCEPT IN THE CASE OF GROSS OR WILLFUL NEGLIGENCE ON OUR PART, BE LIABLE OR RESPONSIBLE FOR ANY LOSS, COSTS, DAMAGES OR EXPENSES INCURRED OR SUSTAINED BY ANYONE RESULTING FROM ANY INTERPRETATION MADE BY ANY OF OUR OFFICERS, AGENTS OR EMPLOYEES. THESE INTERPRETATIONS ARE ALSO SUBJECT TO OUR GENERAL TERMS AND CONDITIONS AS SET OUT IN OUR CURRENT PRICE SCHEDULE.

FILE

103

ILD (DHMM)	0.0	30.00	
SFLA (DHMM)	0.0	6.000	
SFLA (DHMM)	0.0	30.00	1000.0
CILD (MMHD)	0.0		0.0



ILD (DHMM)	0.0	30.00	
SFLA (DHMM)	0.0	6.000	
SFLA (DHMM)	0.0	30.00	1000.0
CILD (MMHD)	0.0		0.0

SENSOR MEASURE POINT TO TENSION REFERENCE POINT

AMPL	41.4	FEET	DT	38.9	FEET
SRAT	38.9	FEET	CBL	41.4	FEET
CALI	29.3	FEET	TT	41.4	FEET
SFL	3.9	FEET	ILD	6.9	FEET
SP	.0	FEET	ILM	3.3	FEET
TENS	.0	FEET	SPAR	.0	FEET
NOIS	33.2	FEET			

PARAMETERS

NAME	VALUE	UNIT	NAME	VALUE	UNIT
CDTS	100.0		BS	6.250	IN
DTF	189.0	US/F	DBH	56.00	US/F
SBR	1.000	DHMM	DSEC	6.600	MMHD
FPHI	SPHI		MSEC	0.3000	
DD	0.0		BHS	OPEN	

COMPANY: REICHHOLD ENERGY CORPORATION
WELL: COLUMBIA COUNTY #13-1 RD#1
FIELD: MIST
COUNTY: COLUMBIA STATE: OREGON

SCHL. FR: 3009.0
SCHL. TD: 3018.0
DRLR. TD: 3028.0
Elev: KB: 1174.6
DF: -----
GL: 1163.2

RECEIVED AT
MAY 17 1982

CC 13-1 RD