



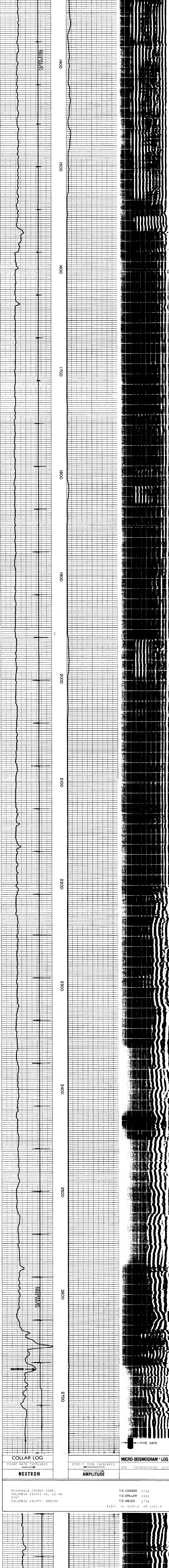
27817  
1983

COMPANY: REICHHOLD ENERGY CORP.  
 WELL: COLUMBIA COUNTY NO. 13-34  
 FIELD: MIST  
 COUNTY: COLUMBIA STATE: OREGON  
 LOCATION: 2386.36' NORTH & 502.92' EAST FROM THE SOUTHWEST CORNER OF:  
 DATE & TIME SURVEY: 12-21-82 @ 3:00pm  
 OPERATING OPERATION: 2822  
 DEPTH: 2736  
 LOGGED INTERVAL: 2736 @ 1350

BORE HOLE RECORD		CASING RECORD	
Bit Size	From To	Csg. Size	From To
5.5"		5.5"	2800

Service Ticket No. 147922      Remarks: 385 SACKS CLASS 6 CEMENT WITH 3% CaCl<sub>2</sub>....

Welex does not guarantee the accuracy of any interpretation of log data, conversion of log data to physical rock parameters, or recommendations which may be given by Welex personnel which may appear on the log or in any other form. Any user of such data, interpretations, conversions, or recommendations agrees that Welex is not responsible except where due to gross negligence or willful misconduct for any loss, damage, or expense resulting from the use thereof.



NEUTRON COLLAR LOG: COUNT RATE INCREASES

AMPLITUDE MICRO-SEISMOGRAM LOG: CEMENT BOND INCREASES

DEPTH: 200 MICROSECONDS 1200

REICHHOLD ENERGY CORP.  
 COLUMBIA COUNTY NO. 13-34  
 MIST  
 COLUMBIA COUNTY, OREGON

T.D. LOGGED 2736  
 T.D. DRILLER 2822  
 T.D. WELEX 2736  
 ELEV: 6L 1254.4 KB 1265.8

