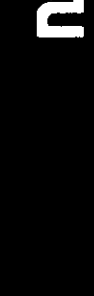


Stumpeper
DUAL INDUCTION-SFL 2"



COMPANY: REICHOLD ENERGY CORP.
WELL: COLUMBIA COUNTY 13-34
FIELD: MIST
COUNTY: COLUMBIA
STATE: OREGON
NATION: USA
LOCATION: 2386.36' N & 502.92' E OF SW CORNER T1P1 7N R1E1 5M
SEC: 34
PERMANT DATA: GL
ELEVATIONS: 1254.4'
ELEV MEASURED FROM: NPI 1254.8'
LDB MEASURED FROM: DATUM
DRUG: MEASURED FROM: KB

OTHER SERVICES-
DHC
MHC
HDI
API SERIAL NO: 36-009-001
PROGRAM TIME NO: 309320
SECURITY: 309320
DRIVER NO: 309320

DATE: 17 DEC 82
RUN NO: 1
DEPTH-DRILLER: 2822.0'
DEPTH-LOGGER: 2823.0'
BTM: 2817.0'
TOP LOG INTERVAL: 489.0'
CASING-DRILLER: 482'
CASING-LOGGER: 482'
BIT SIZE: 7.875
DEPTH: 2822'

TYPE FLUID IN HOLE: LIGNOSULFONATE
DENSITY: 8.9 LB/G
VISCOSITY: 52.0 S
PHI: 9.0
FLUID LOSS: 7.5 C3
SOURCE OF SAMPLE: FLOWLINE
RMI: 3.530 OHMM AT 56.0 DEGF
RMF: 4.250 OHMM AT 50.0 DEGF
RMC: 4.090 OHMM AT 54.0 DEGF
SOURCE RMF/RMC: MEASURED/MEASURED
RM AT BHT: 2.292 OHMM AT 90.0 DEGF
RMC AT BHT: 2.497 OHMM AT 90.0 DEGF
RMC AT BHT: 2.572 OHMM AT 90.0 DEGF

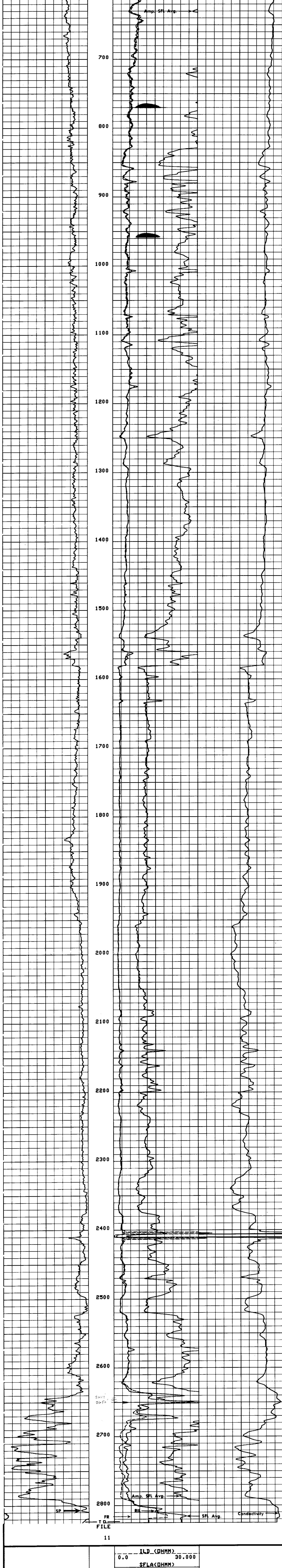
TIME CIRC. STOPPED: 1715 12/16
TIME LOGGER ON BTM: 0830 12/17
MAX. REC. TEMP: 90.0 DEGF
LOGGING UNIT NO: 8076
LOGGING UNIT LOC: SACRAMENTO
RECORDED BY: MAYER
WITNESSED BY: ALGER/BRUER

REMARKS:
EQUIPMENT NUMBERS-
DIS 457 DIC 342 HCD 305 SLS 2251
SLC 1261 SLM 428 IEM 231

ALL INTERPRETATIONS ARE OPINIONS BASED ON INFERENCES FROM ELECTRICAL OR OTHER MEASUREMENTS AND WE CANNOT, AND DO NOT GUARANTEE THE ACCURACY OR CORRECTNESS OF ANY INTERPRETATIONS, AND WE SHALL NOT, EXCEPT IN THE CASE OF GROSS OR WILLFUL NEGLIGENCE ON OUR PART, BE LIABLE OR RESPONSIBLE FOR ANY LOSS, COSTS, DAMAGES OR EXPENSES INCURRED OR SUSTAINED BY ANYONE RESULTING FROM ANY INTERPRETATION MADE BY ANY OF OUR OFFICERS, AGENTS OR EMPLOYEES. THESE INTERPRETATIONS ARE ALSO SUBJECT TO OUR GENERAL TERMS AND CONDITIONS AS SET OUT IN OUR CURRENT PRICE SCHEDULE.

FILE
103

ILD (OHMM)	30.000	CILD(MMHO)	0.0
SFLA(OHMM)	6.0000		
SFLA(OHMM)	30.000		



SP (MV)	0.0	ILD (OHMM)	30.000	CILD(MMHO)	0.0
		SFLA(OHMM)	6.0000		
		SFLA(OHMM)	30.000		

SENSOR MEASURE POINT TO TENSION REFERENCE POINT					
AMPL	41.4	FEET	DT	38.9	FEET
SRAT	38.9	FEET	CBL	41.4	FEET
CALI	29.3	FEET	TT	1.4	FEET
SFL	3.9	FEET	ILD	6.9	FEET
SP	.0	FEET	ILM	3.3	FEET
TENS	.0	FEET	SPAR	.0	FEET
NDIS	33.2	FEET			

PARAMETERS					
NAME	VALUE	UNIT	NAME	VALUE	UNIT
CDTS	145.000		BS	7.87500	IN
DTF	189.000	US/F	DTM	35.6000	US/F
SBR	1.00000	OHMM	DSEC	10.5000	MMHO
FPHI	SPHI		ILM	3.3	FEET
DD	0.0	F	DSEC	9.50000	MMHO
			BHS	OPEN	

COMPANY: REICHOLD ENERGY CORP. SCHL. FR: 2817.0'
WELL: COLUMBIA COUNTY 13-34 SCHL. TD: 2823.0'
FIELD: MIST DRLR. TD: 2822.0'
COUNTY: COLUMBIA STATE: OREGON Elev: 1265.8'
DF: N/A
GL: 1254.4'