

HORIZON

WELL LOGGING

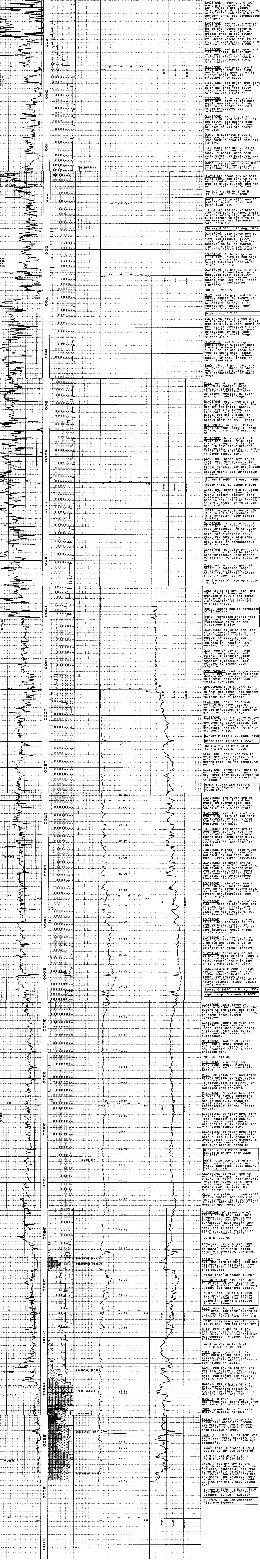
711 St. Andrews Way
 Lombard, California 93436
 (805) 733-0972

COMPANY: ENERFIN RESOURCES NORTHWEST
 WELL: C.C. 14-22-75 (Raptor)
 LOCATION: 1158 8th + 12th St. NW corner Sec. 22 T.7N. R.14E. S.14
 ELEVATION: 911
 COUNTY: Columbia, Oregon
 SPUD DATE: July 18, 1999
 LOGGING DATES: July 18 to July 23, 1999
 OPERATOR: Enerfin Resources Northwest
 GEOLOGIST: Dave Huggins
 DRILL REP: Rob Lucas - Production Specialist
 CONTRACTOR: Taylor Drilling Inc.
 #7
 LOGGING GEOLOGIST: Bill Sillmore, Matt Carson

ABBREVIATIONS	SYMBOLS
CO Circulate Out	PEBBLES >2mm
LAT Logged After Trip	SAND
CG Connection Gas	SANDSTONE
HC Hiper Gas	SILTSTONE
TG Trip Gas	MUDSTONE
SG Survey Gas	SHALE
NR No Returns	MARL
NB New Bit	CLAY
NR Hiper Run	LIGNITE
CORE INTERVAL	LODESTONE
NPB (100,000' full scale)	LIMESTONE
PP Pump Pressure	VOLCANICS
SPM Strokes per minute	TUFF
	BASALT

DRILL RATE	LITH	MINERAL	GASES	CHROMATOGRAPH	REMARKS
------------	------	---------	-------	---------------	---------

ROD: 300
 ROP: 100K
 MWD: 4F
 SP: 700
 SPM: 80
 RPM: 70



DRILL RATE	LITH	MINERAL	GASES	CHROMATOGRAPH	REMARKS
ROD: 300					
ROP: 100K					
MWD: 4F					
SP: 700					
SPM: 80					
RPM: 70					