



2"=100'
DUAL INDUCTION
GUARD LOG

COMPANY REICHOLD ENERGY CORPORATION
WELL COLUMBIA COUNTY 14-33
FIELD MIST
COUNTY COLUMBIA STATE OREGON
Location 417 08' NORTH & 626' EAST FROM
THE SOUTHWEST CORNER OF:
(M.B. & M.)
Sec. 33 Twp. 7N Range 5W
Elev. K.B. 772.81
D.F. 761.41

Permanent Datum G.L. 0R Elev. 761.41
Log Measured From K.B. 11.4 F. Above Perm. Datum
Drilling Measured From K.B. D.F. 761.41
Date 4-16-83
Run No. ONE
Depth—Driller 3105
Depth—Welex 3102
Btm. Log Inter. 537

Top Log Inter. 537
Casing—Driller 8 5/8 @ 537
Casing—Welex 537
Bt Size 7 7/8
Type Fluid in Hole GEL LIQND.

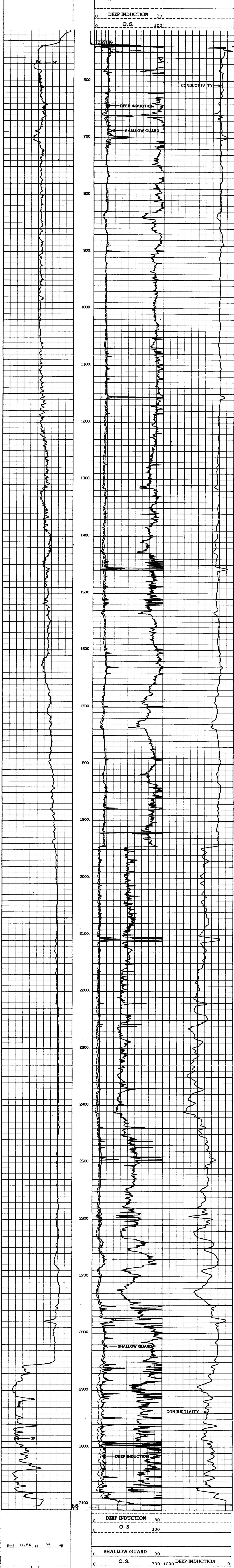
Dens. Visc. 9.9 150
pH 1 Fluid Loss 9.0 15.2 ml
Source of Sample CIRCULATED
R₁ @ Meas. Temp. 1.80 @ 38 °F
R₂ @ Meas. Temp. 2.10 @ 38 °F
R₃ @ Meas. Temp. 2.10 @ 38 °F
R₄ @ Meas. Temp. 2.10 @ 38 °F
R₅ @ Meas. Temp. 2.10 @ 38 °F
R₆ @ Meas. Temp. 2.10 @ 38 °F
R₇ @ Meas. Temp. 2.10 @ 38 °F
R₈ @ Meas. Temp. 2.10 @ 38 °F
R₉ @ Meas. Temp. 2.10 @ 38 °F
R₁₀ @ Meas. Temp. 2.10 @ 38 °F
R₁₁ @ Meas. Temp. 2.10 @ 38 °F
R₁₂ @ Meas. Temp. 2.10 @ 38 °F
R₁₃ @ Meas. Temp. 2.10 @ 38 °F
R₁₄ @ Meas. Temp. 2.10 @ 38 °F
R₁₅ @ Meas. Temp. 2.10 @ 38 °F
R₁₆ @ Meas. Temp. 2.10 @ 38 °F
R₁₇ @ Meas. Temp. 2.10 @ 38 °F
R₁₈ @ Meas. Temp. 2.10 @ 38 °F
R₁₉ @ Meas. Temp. 2.10 @ 38 °F
R₂₀ @ Meas. Temp. 2.10 @ 38 °F
R₂₁ @ Meas. Temp. 2.10 @ 38 °F
R₂₂ @ Meas. Temp. 2.10 @ 38 °F
R₂₃ @ Meas. Temp. 2.10 @ 38 °F
R₂₄ @ Meas. Temp. 2.10 @ 38 °F
R₂₅ @ Meas. Temp. 2.10 @ 38 °F
R₂₆ @ Meas. Temp. 2.10 @ 38 °F
R₂₇ @ Meas. Temp. 2.10 @ 38 °F
R₂₈ @ Meas. Temp. 2.10 @ 38 °F
R₂₉ @ Meas. Temp. 2.10 @ 38 °F
R₃₀ @ Meas. Temp. 2.10 @ 38 °F
R₃₁ @ Meas. Temp. 2.10 @ 38 °F
R₃₂ @ Meas. Temp. 2.10 @ 38 °F
R₃₃ @ Meas. Temp. 2.10 @ 38 °F
R₃₄ @ Meas. Temp. 2.10 @ 38 °F
R₃₅ @ Meas. Temp. 2.10 @ 38 °F
R₃₆ @ Meas. Temp. 2.10 @ 38 °F
R₃₇ @ Meas. Temp. 2.10 @ 38 °F
R₃₈ @ Meas. Temp. 2.10 @ 38 °F
R₃₉ @ Meas. Temp. 2.10 @ 38 °F
R₄₀ @ Meas. Temp. 2.10 @ 38 °F
R₄₁ @ Meas. Temp. 2.10 @ 38 °F
R₄₂ @ Meas. Temp. 2.10 @ 38 °F
R₄₃ @ Meas. Temp. 2.10 @ 38 °F
R₄₄ @ Meas. Temp. 2.10 @ 38 °F
R₄₅ @ Meas. Temp. 2.10 @ 38 °F
R₄₆ @ Meas. Temp. 2.10 @ 38 °F
R₄₇ @ Meas. Temp. 2.10 @ 38 °F
R₄₈ @ Meas. Temp. 2.10 @ 38 °F
R₄₉ @ Meas. Temp. 2.10 @ 38 °F
R₅₀ @ Meas. Temp. 2.10 @ 38 °F
R₅₁ @ Meas. Temp. 2.10 @ 38 °F
R₅₂ @ Meas. Temp. 2.10 @ 38 °F
R₅₃ @ Meas. Temp. 2.10 @ 38 °F
R₅₄ @ Meas. Temp. 2.10 @ 38 °F
R₅₅ @ Meas. Temp. 2.10 @ 38 °F
R₅₆ @ Meas. Temp. 2.10 @ 38 °F
R₅₇ @ Meas. Temp. 2.10 @ 38 °F
R₅₈ @ Meas. Temp. 2.10 @ 38 °F
R₅₉ @ Meas. Temp. 2.10 @ 38 °F
R₆₀ @ Meas. Temp. 2.10 @ 38 °F
R₆₁ @ Meas. Temp. 2.10 @ 38 °F
R₆₂ @ Meas. Temp. 2.10 @ 38 °F
R₆₃ @ Meas. Temp. 2.10 @ 38 °F
R₆₄ @ Meas. Temp. 2.10 @ 38 °F
R₆₅ @ Meas. Temp. 2.10 @ 38 °F
R₆₆ @ Meas. Temp. 2.10 @ 38 °F
R₆₇ @ Meas. Temp. 2.10 @ 38 °F
R₆₈ @ Meas. Temp. 2.10 @ 38 °F
R₆₉ @ Meas. Temp. 2.10 @ 38 °F
R₇₀ @ Meas. Temp. 2.10 @ 38 °F
R₇₁ @ Meas. Temp. 2.10 @ 38 °F
R₇₂ @ Meas. Temp. 2.10 @ 38 °F
R₇₃ @ Meas. Temp. 2.10 @ 38 °F
R₇₄ @ Meas. Temp. 2.10 @ 38 °F
R₇₅ @ Meas. Temp. 2.10 @ 38 °F
R₇₆ @ Meas. Temp. 2.10 @ 38 °F
R₇₇ @ Meas. Temp. 2.10 @ 38 °F
R₇₈ @ Meas. Temp. 2.10 @ 38 °F
R₇₉ @ Meas. Temp. 2.10 @ 38 °F
R₈₀ @ Meas. Temp. 2.10 @ 38 °F
R₈₁ @ Meas. Temp. 2.10 @ 38 °F
R₈₂ @ Meas. Temp. 2.10 @ 38 °F
R₈₃ @ Meas. Temp. 2.10 @ 38 °F
R₈₄ @ Meas. Temp. 2.10 @ 38 °F
R₈₅ @ Meas. Temp. 2.10 @ 38 °F
R₈₆ @ Meas. Temp. 2.10 @ 38 °F
R₈₇ @ Meas. Temp. 2.10 @ 38 °F
R₈₈ @ Meas. Temp. 2.10 @ 38 °F
R₈₉ @ Meas. Temp. 2.10 @ 38 °F
R₉₀ @ Meas. Temp. 2.10 @ 38 °F
R₉₁ @ Meas. Temp. 2.10 @ 38 °F
R₉₂ @ Meas. Temp. 2.10 @ 38 °F
R₉₃ @ Meas. Temp. 2.10 @ 38 °F
R₉₄ @ Meas. Temp. 2.10 @ 38 °F
R₉₅ @ Meas. Temp. 2.10 @ 38 °F
R₉₆ @ Meas. Temp. 2.10 @ 38 °F
R₉₇ @ Meas. Temp. 2.10 @ 38 °F
R₉₈ @ Meas. Temp. 2.10 @ 38 °F
R₉₉ @ Meas. Temp. 2.10 @ 38 °F
R₁₀₀ @ Meas. Temp. 2.10 @ 38 °F

Service Ticket No. 154452 Remarks: SCALE CHANGES (Type Log, Depth, Scale Up Hole, Scale Down Hole)

EQUIPMENT DATA (Run No., Tool Type and No., Pad Type, Tool Position, Other)

TAPE VERSION 4.0

Welex does not guarantee the accuracy of any interpretation of log data, conversion of log data to physical rock parameters, or recommendations which may be given by Welex personnel or which may appear on the log or in any other form.



POTENTIAL MILLIVOLTS (Left and Right scales, Rmf 0.84 at 95 °F)

REICHOLD ENERGY CORPORATION COLUMBIA COUNTY 14-33 MIST COLUMBIA COUNTY, OREGON

T.D. LOGGED 3102 T.D. DRILLER 3105 T.D. WELEX 3105 ELEV: KB 7/2.81 6L 761.41

