



2" NEUTRON-DENSITY



Field Log

COMPANY: ARCO EXPLORATION AND TECHNOLOGY COMPANY

WELL: COLUMBIA COUNTY 22-27

FIELD: MIST GAS FIELD

COUNTRY: OREGON

STATE: OREGON

LOCATION: 2329-0715 89 6' 27" & 1180-1715 0 53' 33" W OF NW CORNER

SEC: 27 TWP: 6N RGE: 5M

PERMANENT DATUM: GL

ELEVATIONS- ELEM. OF PERM. DATUM: 850.2 F

LOG MEASURED FROM: KB

DRLG. MEASURED FROM: KB

DATE: 23 NOV 85

RUN NO: 1

DEPTH-DRILLER: 2532.0 F

DEPTH-LOGGER: 2512.0 F

TOP LOG INTERVAL: 2509.0 F

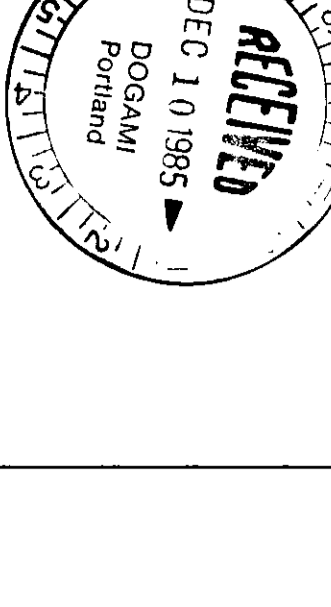
CASING-DRILLER: 418.0 F

CASING-LOGGER: 418.0 F

WEIGHT: 9.625

BIT SIZE: 8.75

BIT DEPTH: 2532.0 F



OTHER SERVICES- DIL-BHC HDT SAT SMS

PROGRAM TAPE NO: 28.24 SERVICE ORDER NO: 450595

TYPE FLUID IN HOLE: GEL-POLYMER
 DENSITY: 10.20 LB/G
 VISCOSITY: 52.0 S
 PH: 8.5
 FLUID LOSS: 5.2 C3
 SOURCE OF SAMPLE: FLOWLINE
 RM: 3.830 OHMM AT 45.0 DEGF
 RMF: 3.110 OHMM AT 45.0 DEGF
 RMC: 3.950 OHMM AT 45.0 DEGF
 SOURCE RMF/RMC: MEASURED / MEASURED
 RM AT BHT: 1.778 OHMM AT 105. DEGF
 RMF AT BHT: 1.444 OHMM AT 105. DEGF
 RMC AT BHT: 1.834 OHMM AT 105. DEGF

TIME CIRC. STOPPED: 0900 11-22
 TIME LOGGER ON BTH.: 06:00 11-23

MAX. REC. TEMP: 105.0 DEGF

LOGGING UNIT NO: 8126
 LOGGING UNIT LOC: SACRAMENTO
 RECORDED BY: REINIG/PILCH
 WITNESSED BY: ANDERSON

REMARKS:

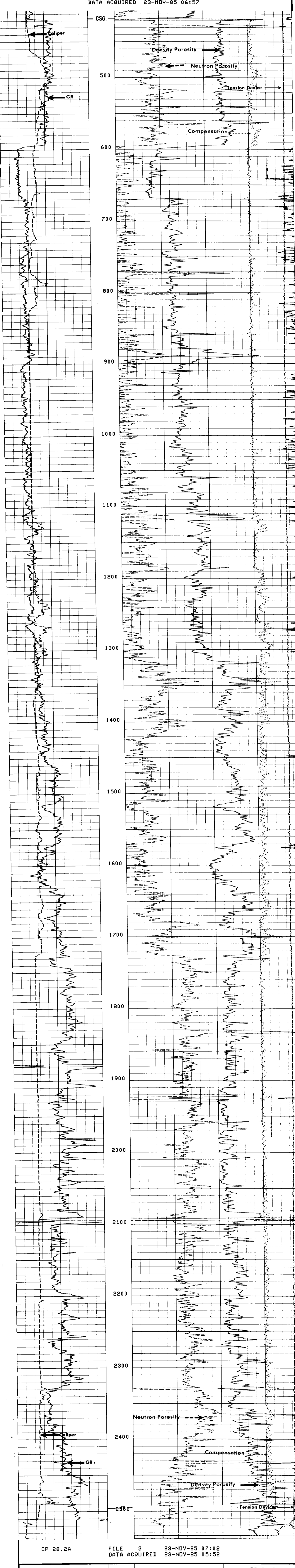
EQUIPMENT NUMBERS-

PGS-HB 542 PGC-JA 1120 CNC-A 1132 SGC-JAA 466
 NLM-BC 456

ALL INTERPRETATIONS ARE OPINIONS BASED ON INFERENCES FROM ELECTRICAL OR OTHER MEASUREMENTS AND WE CANNOT, AND DO NOT GUARANTEE THE ACCURACY OR CORRECTNESS OF ANY INTERPRETATIONS, AND WE SHALL NOT, EXCEPT IN THE CASE OF GROSS OR WILLFUL NEGLIGENCE ON OUR PART, BE LIABLE OR RESPONSIBLE FOR ANY LOSS, COSTS, DAMAGES OR EXPENSES INCURRED OR SUSTAINED BY ANYONE RESULTING FROM ANY INTERPRETATION MADE BY ANY OF OUR OFFICERS, AGENTS OR EMPLOYEES. THESE INTERPRETATIONS ARE ALSO SUBJECT TO OUR GENERAL TERMS AND CONDITIONS AS SET OUT IN OUR CURRENT PRICE SCHEDULE.

CP 28.2A FILE 0 23-NOV-85 08:49
 DATA ACQUIRED NA

CALI(IN)		TENS(LB)	
6.0000	16.0000	10000.	0.0
GR (GAPI)		DRHO(G/C3)	
0.0	150.00	.2500	.25000
		RHOB(G/C3)	
		.65000	1.6500
		NPHI	
		1.2000	.60000
		NPHI	
		.60000	0.0
		RHOB(G/C3)	
		1.6500	2.6500



CALI(IN)		TENS(LB)	
6.0000	16.0000	10000.	0.0
GR (GAPI)		DRHO(G/C3)	
0.0	150.00	.2500	.25000
		RHOB(G/C3)	
		.65000	1.6500
		NPHI	
		1.2000	.60000
		NPHI	
		.60000	0.0
		RHOB(G/C3)	
		1.6500	2.6500

SENSOR MEASURE POINT TO TOOL ZERO

FCNL 18.1 FEET	GR 26.6 FEET
FFDC 2.7 FEET	NCNL 18.1 FEET
CALI 2.7 FEET	NFDC 2.7 FEET
MRAT 18.1 FEET	TENS - .3 FEET

PARAMETERS

NAME	VALUE	UNIT	NAME	VALUE	UNIT
HC	CALI		PSNR	2.30000	
FD	1.00000	G/C3	MATR	SAND	
FDCC	ALLO		MDEN	2.65000	G/C3
HMUD	10.2000	LB/G	BHF	HATE	
BHS	OPEN		CSIZ	9.62500	IN
DD	0.0	F	BS	8.75000	IN
PP	NORM				

TAPE NOT MADE