

00-28-27-65
Schlumberger

2" BMC SONIC

CSU Field Log

COMPANY: ARCO EXPLORATION AND TECHNOLOGY COMPANY
 WELL: COLUMBIA COUNTY 22-27
 FIELD: MIST GAS FIELD
 COUNTY: COLUMBIA
 STATE: OREGON
 LOCATION: 2339.07'S 89 5' 27" & 8' N. CORNER
 1180.19'S 89 53' 53" W
 REET 5M

SECTION: 27

PERMANENT DATUM: GL
 ELEVATION: 850.2 F
 LOG MEASURED FROM: K8
 DRG. MEASURED FROM: K8

DATE: 22 NOV 85
 RUN NO: 1

DEPTH-DRILLER: 2332.0 F
 DEPTH-LOGGERS: 2312.0 F
 BTM. LOG INTERVAL: 2470.0 F
 TOP LOG INTERVAL: 416.0 F
 CASING-DRILLER: 418.0 F
 CASING-LOGGERS: 418.0 F
 CASING-LOGGERS: 418.0 F
 MEIGHT: 9.663
 BIT DEPTH: 8.25
 2332.0 F

OTHER SERVICES:
 DIL
 HOT
 SRI
 SWS

PROGRAM
 TAPE NO:
 28.2A
 SERVICE
 ORDER NO:
 4589395

ELEVATIONS:
 KBI: 862.2 F
 DFI: 850.2 F
 GLI: 850.2 F

TYPE FLUID IN HOLE: GEL-POLYMER
 DENSITY: 10.20 LB/G
 VISCOSITY: 52.0 S
 PH: 8.5
 FLUID LOSS: 5.2 C3
 SOURCE OF SAMPLE: FLOWLINE
 RM: 3.830 DHMM AT 45.0 DEGF
 RMF: 3.110 DHMM AT 45.0 DEGF
 RMC: 3.950 DHMM AT 45.0 DEGF
 SOURCE RMF/RMC: MEASURED /MEASURED
 RM AT BHT: 1.778 DHMM AT 105. DEGF
 RMF AT BHT: 1.444 DHMM AT 105. DEGF
 RMC AT BHT: 1.834 DHMM AT 105. DEGF

TIME CIRC. STOPPED: 0900 11-22
 TIME LOGGER ON BTM.: 20:05 11-20

MAX. REC. TEMP: 105.0 DEGF

LOGGING UNIT NO: 8126
 LOGGING UNIT LOC: SACRAMENTO
 RECORDED BY: REINIG/PILCH
 WITNESSED BY: ANDERSON

REMARKS:
 INDUCTION AND SONIC RUN IN COMBINATION.
 TOOL STUCK AT 2230. SEE TENSION CURVE.
 THE PULL CAUSED A DEPTH SHIFT IN LOG.
 LOG IS DEPTH OFFSET TO MATCH THE DENSITY NEUTRON.
 CENTRALIZERS WERE TORN FROM SONIC SONDE WHEN TOOL BROKE FREE
 SONIC UNCENTERIALIZED ABOVE 2200 FEET.

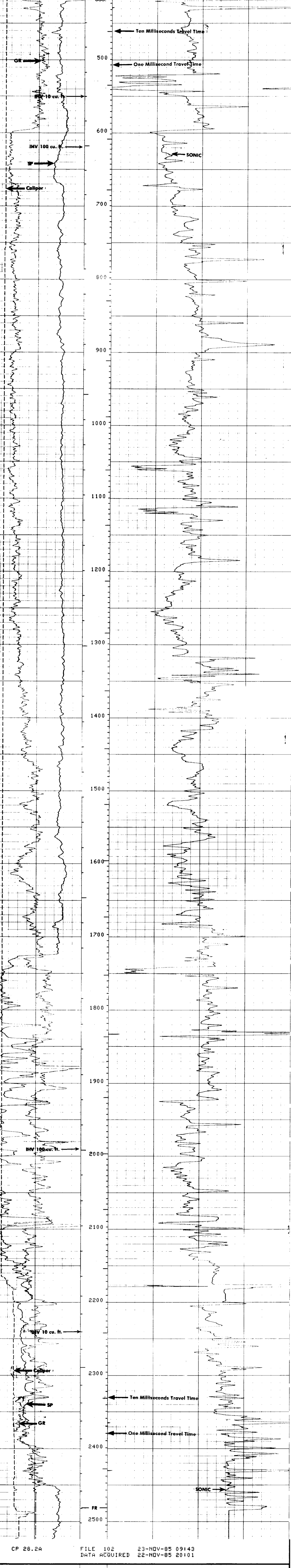
EQUIPMENT NUMBERS-
 DIS-EC 1422 DIC-DA 1149 MCD-DA 1186 SLS-RC 375
 SLC-FA 1261 SGC-JAA 466 SLM-DA 428 IEM-BD 685
 NLM-BC 456

ALL INTERPRETATIONS ARE OPINIONS BASED ON INFERENCES FROM ELECTRICAL OR OTHER MEASUREMENTS AND WE CANNOT, AND DO NOT GUARANTEE THE ACCURACY OR CORRECTNESS OF ANY INTERPRETATIONS, AND WE SHALL NOT, EXCEPT IN THE CASE OF GROSS OR HILLFUL NEGLIGENCE ON OUR PART, BE LIABLE OR RESPONSIBLE FOR ANY LOSS, COSTS, DAMAGES OR EXPENSES INCURRED OR SUSTAINED BY ANYONE, RESULTING FROM ANY INTERPRETATION MADE BY ANY OF OUR OFFICERS, AGENTS OR EMPLOYEES. THESE INTERPRETATIONS ARE ALSO SUBJECT TO OUR GENERAL TERMS AND CONDITIONS AS SET OUT IN OUR CURRENT PRICE SCHEDULE.

CP 28.2A FILE 103 23-NOV-85 08:02
 DATA ACQUIRED 22-NOV-85 20:55

EVENT MARK SUMMARY:
 OUTPUT INTERVAL DEPTH TRACK
 BETWEEN PIPS EDGE
 IHV 10.0000 F3 LEFT EDGE
 ITT .00100000 S RIGHT EDGE

GR (GAPI) 0.0 150.00
 CALI(IN) 6.0000 16.000
 SP (MV) -100.0 0.0 DT (US/F) 175.00 75.000



CP 28.2A FILE 103 23-NOV-85 09:47
 DATA ACQUIRED 22-NOV-85 20:01

SENSOR MEASURE POINT TO TOOL ZERO
 SRAT 41.4 FEET AMPL 43.9 FEET
 TT1 42.9 FEET CEL 43.0 FEET
 TT3 40.2 FEET TT2 43.0 FEET
 TO 43.9 FEET TT4 39.0 FEET
 SLTT 43.9 FEET TT 43.0 FEET
 GR 64.1 FEET SCBL 43.0 FEET
 ILD 9.4 FEET CALI 31.8 FEET
 SPL 6.4 FEET ILM 5.8 FEET
 SPAR 2.5 FEET SP 2.0 FEET
 NDIS 2.5 FEET TENS 2.9 FEET

PARAMETERS
 NAME VALUE UNIT NAME VALUE UNIT
 CDT5 100.000 SPFS R-H
 DTF 189.000 DTM 56.0000 US/F
 DSIN 5 US DDEL 200 US
 HMUD 10.2000 LB/G DWCO 512
 SBR 1.00000 DHMM DSEC 3.70000 MMHO
 FPNI SPHI MSEC 6.40000 MMHO
 FNHM .620000 FEXP 2.15000
 BHS OPEN F CSZ 9.62500 IN
 DO 0.0 F BS 8.75000 IN
 PP NORM

TAPE NOT MADE