

**DUAL INDUCTION-SFL
W/ LINEAR CORRELATION LOG
TRUE VERTICAL DEPTH**

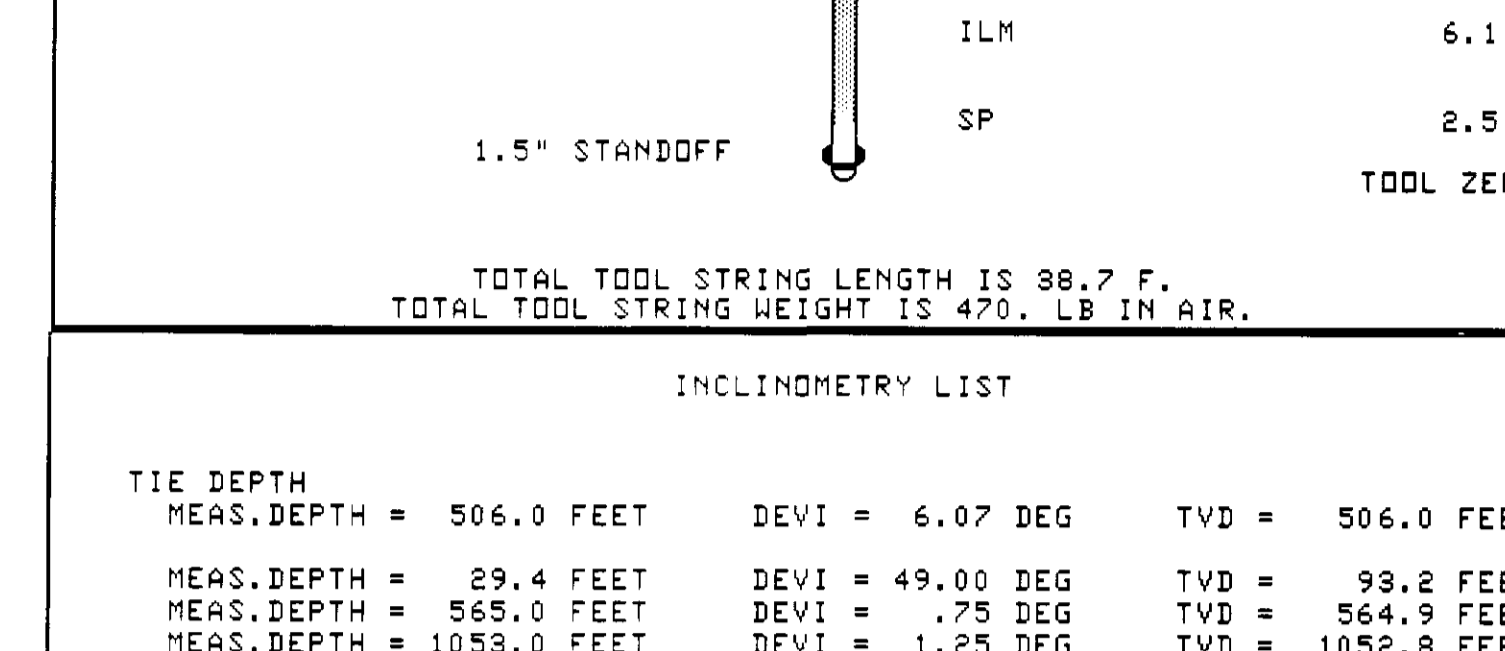
Schlumberger

COMPANY NAHAMA & WEAGANT ENERGY CO.
WELL "COMPY" JOHNSTON #22B-19-65
FIELD MIST
COUNTY COLUMBIA
STATE OREGON
LOCATION 1823'S & 1214'E
WELL "COMPY" JOHNSTON #22B-19-65
COMPANY NAHAMA & WEAGANT ENERGY CO.
APN SERIAL NO. 36 009 00306
APN 009 00306
Log Measured From KI
Permanent Datum KI
Log Measured From KI
Date 19 JUL 1993
Run No. ONE
Depth 2940.0
Depth Offset 2940.0
Depth Logger (SCL) 2940.0
Run Log Interval 8 5/8" #108 0.1
Top Log Interval 8 5/8" #108 0.1
Casing Diameter 8 5/8" #108 0.1
Casing Logger 8 5/8" #108 0.1
Bit Size 7 7/8" #3940.0
Type Fluid in Hole GEL/FOURM II
Dens. 9.40 I/LIC
Visc. 480 S
PH 6.7 C3
Source of Sample FLOWING
Fm @ Meas. Temp. 2.340 OHMM # /80 DEG
Fm @ Meas. Temp. 2.750 OHMM # /70 DEG
Fm @ Meas. Temp. 2.140 OHMM # /20 DEG
Source of Meas. Temp. MARS/IND # MARS/IND
Fm @ BHT 2.094 OHMM # 880 DEG
Log on Bottom 2218 19 JUL 93
Log on Bottom 2218 19 JUL 93
Was Rec. Temp. 8271 19 JUL 93
Equip. Location 8271 19 JUL 93
Recorded by HOUNN HANH
Checked by HOUNN HANH

The well name, location and borehole reference data were furnished by the customer.

All interpretations are opinions based on inferences from electrical or other measurements and we cannot and do not guarantee the accuracy or correctness of any interpretations, and we shall not, except in the case of gross or willful negligence on our part, be liable or responsible for any loss, costs, damages or expenses incurred or sustained by anyone resulting from any interpretations made by any of our officers, agents or employees. These interpretations are also subject to Clause 4 of our General Terms and Conditions as set out in our current Price Schedule.

Run No.	ONE
Service Order No.	824487
Drilling Fluid Level	
Salinity	8000 PPM
Rmf @ BHT	2287 OHMM @ 880 DEG
Rmf @ BHT	780 OHMM @ 880 DEG
Logging Speed	3600.0 F/H
EQUIPMENT DATA	
Tool Number 1	DIS-EC 422
Tool Number 2	DIC-DA 749
Tool Number 3	MCD-DA 688
Tool Number 4	
Tool Number 5	
Tool Number 6	IEM-BD 885
Tool Number 7	
Tool Number 8	
Tool Number 9	
Tool Number 10	
Tool Number 11	
Tool Number 12	
REMARKS:	
"WC 5" S" ANDOFFS RUN ON INDUCTION TOOL "CLE KICKED OFF AT 2400 FT. MAXIMUM DEVIATION 48 DEG AT TD.	

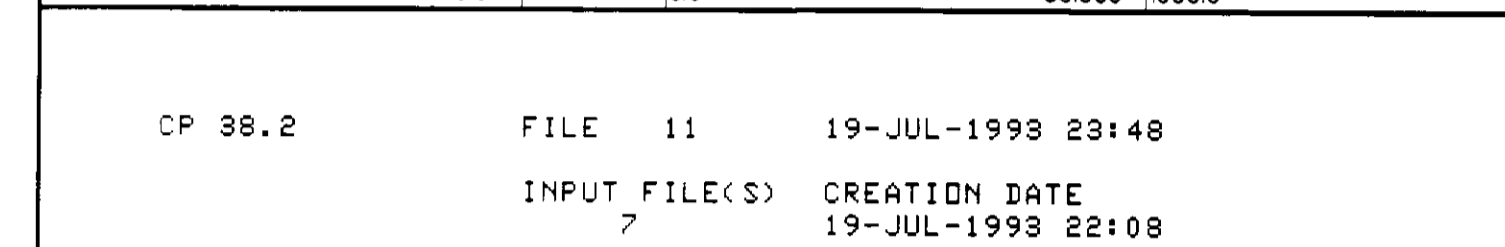


TOTAL TOOL STRING LENGTH IS 38.7 F.
 TOTAL TOOL STRING WEIGHT IS 470. LB IN AIR.

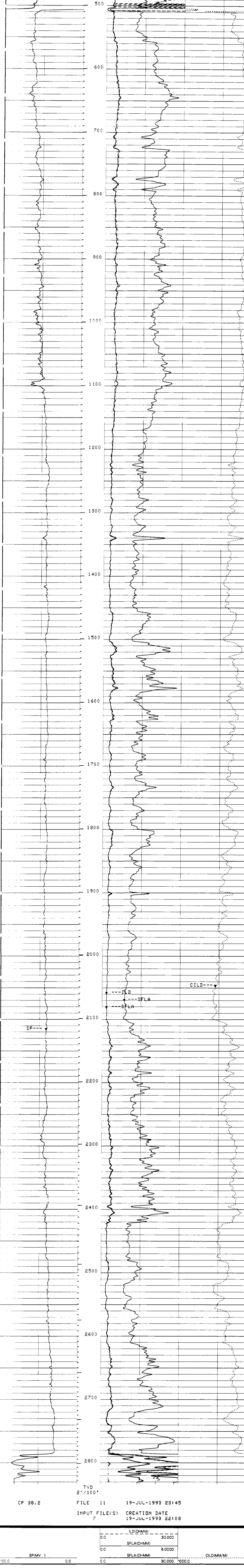
INCLINOMETRY LIST			
TIE DEPTH	MEAS. DEPTH = 506.0 FEET	DEVI = 6.07 DEG	TVD = 506.0 FEET
MEAS. DEPTH =	29.4 FEET	DEVI = 49.00 DEG	TVD = 93.2 FEET
MEAS. DEPTH =	565.0 FEET	DEVI = .75 DEG	TVD = 564.9 FEET
MEAS. DEPTH =	1053.0 FEET	DEVI = 1.25 DEG	TVD = 1052.8 FEET
MEAS. DEPTH =	1482.0 FEET	DEVI = 1.75 DEG	TVD = 1481.7 FEET
MEAS. DEPTH =	1947.0 FEET	DEVI = 3.00 DEG	TVD = 1946.3 FEET
MEAS. DEPTH =	2150.0 FEET	DEVI = 2.80 DEG	TVD = 2149.0 FEET
MEAS. DEPTH =	2260.0 FEET	DEVI = 10.11 DEG	TVD = 2258.2 FEET
MEAS. DEPTH =	2323.0 FEET	DEVI = 13.80 DEG	TVD = 2319.9 FEET
MEAS. DEPTH =	2417.0 FEET	DEVI = 18.30 DEG	TVD = 2410.1 FEET
MEAS. DEPTH =	2479.0 FEET	DEVI = 23.30 DEG	TVD = 2476.0 FEET
MEAS. DEPTH =	2601.0 FEET	DEVI = 34.60 DEG	TVD = 2627.9 FEET
MEAS. DEPTH =	2663.0 FEET	DEVI = 45.50 DEG	TVD = 2722.7 FEET
MEAS. DEPTH =	2787.0 FEET	DEVI = 48.50 DEG	TVD = 2873.1 FEET
MEAS. DEPTH =	2859.0 FEET	DEVI = 49.00 DEG	TVD = 2828.1 FEET
MEAS. DEPTH =	2940.0 FEET	DEVI = 49.00 DEG	TVD = 2828.1 FEET

CP 38.2 FILE 0 20-JUL-1993 00:38

MAIN LOG



CP 38.2 FILE 11 19-JUL-1993 23:48
 INPUT FILE(S) 7 CREATION DATE 19-JUL-1993 22:08



CP 38.2 FILE 11 19-JUL-1993 23:45
 INPUT FILE(S) 7 CREATION DATE 19-JUL-1993 22:08



SENSOR MEASURE POINT TO TOOL ZERO
 DITD 9.9 FEET MCDB 31.9 FEET
 DTD 2.5 FEET

PARAMETER	VALUE	UNIT
PP - Playback Processing	NDRM	
DD - Depth Offset for Logical Unit LI1	0.0	F
"SEC - Medium Sonde Error Correction	7.50000	MM/M
CSR - Shoulder Bed Resistivity	1.00000	OHMM
DSEC - Deep Sonde Error Correction	4.40000	MM/M
FCD - Future Casing Diameter	4.50000	IN
SPVD - Start Point Vertical Depth	0.0	F
SINT - Sampling Interval for GCT Depth-Logging Tap	10.0000	M
BS - Bit Size	7.87500	IN
BHD - Borehole Status (Open or Cased)	OPEN	

COMPANY NAHAMA & WEAGANT ENERGY CO. SCHL. FR 2934 C F
 WELL "COMPY" JOHNSTON #22B-19-65 SCHL. TD 2840 C F
 FIELD MIST DLRL. TD 2840 C F
 COUNTY COLUMBIA STATE OREGON Elev. KB 8470 C F
 DF 848 C F
 GL 8370 C F