

COMPANY: REICHHOLD ENERGY CORPORATION  
 WELL: COLUMBIA COUNTY 23-4  
 FIELD: MIST  
 COUNTY: COLUMBIA  
 STATE: OREGON  
 LOCATION: 1666' NORTH & 436' WEST  
 OF SOUTH 1/4 CORNER  
 SECT: 4 T4P1 6N  
 REG: 5M  
 PERMANENT DATUM: GL  
 ELEV. OF PERM. DATUM: 745.1 F  
 LOG MEASURED FROM: PERM. DATUM  
 DRLOG. MEASURED FROM: KB  
 DATE: 29 NOV 84  
 RUN NO: 1  
 DEPTH-DRILLER: 3024.0 F  
 DEPTH-DIGGER: 3022.0 F  
 ETR. LOG INTERVAL: 3016.0 F  
 TOP LOG INTERVAL: 478.0 F  
 CASING-DRILLER: 470 F  
 CASING-LOGGER: 478 F  
 CASING: 8 5/8"  
 BIT SIZE: 7 7/8"  
 DEPTH: 3024 F

OTHER SERVICES-  
 SONIC  
 FDC/CNL/GR  
 HDT

PROGRAM  
 TAPE NO:  
 DATE:  
 SERVICE  
 ORDER NO:  
 43E1179

RECEIVED - PILD  
 JAN 18 1985  
 DEPT. OF GEOLOGY  
 600 UNIVERSITY AVENUE  
 SACRAMENTO, CALIF.

TYPE FLUID IN HOLE: GEL/LIGNO.  
 DENSITY: 9.7 LB/G  
 VISCOSITY: 40.0 S  
 PH: 9.0  
 FLUID LOSS: 5.6 C3  
 SOURCE OF SAMPLE: FLOWLINE  
 RMF: 3.010 DHMM AT 52.0 DEGF  
 RMC: 3.350 DHMM AT 42.0 DEGF  
 RMC: 3.720 DHMM AT 47.0 DEGF  
 SOURCE RMF/RMC: MEAS/MEAS  
 RM AT BHT: 1.691 DHMM AT 98.0 DEGF  
 RMC AT BHT: 1.563 DHMM AT 98.0 DEGF  
 RMC AT BHT: 1.913 DHMM AT 98.0 DEGF

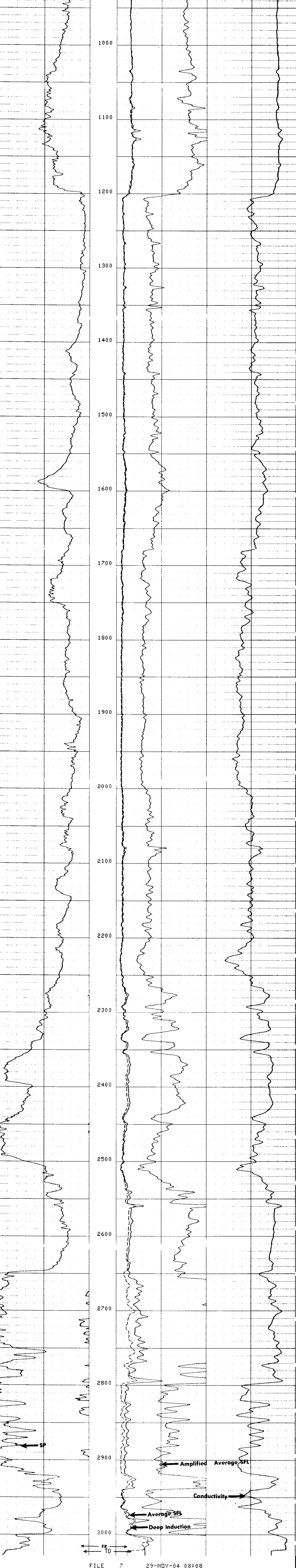
TIME CIRC. STOPPED: 18:00 11-28  
 TIME LOGGER ON BTM.: 06:42 11-29  
 MAX. REC. TEMP: 98.0 DEGF

LOGGING UNIT NO: 8178  
 LOGGING UNIT LOC: SACRAMENTO  
 RECORDED BY: SUTER  
 WITNESSED BY: ALGER/MEYER

REMARKS:  
 SALINITY : 500 PPM CL-  
 CENTRALIZATION: RUBBER FINS AND CMEZ  
 REPEATS DONE AT TOP DUE TO HOLE CONDITIONS

EQUIPMENT NUMBERS-  
 DIS 1422 DIC 1149 IEM 686 MCD 1507  
 SLS 346 SLC 1589 SLM 383 SDM 1033

ALL INTERPRETATIONS ARE OPINIONS BASED ON INFERENCES FROM ELECTRICAL OR OTHER MEASUREMENTS AND WE CANNOT, AND DO NOT GUARANTEE THE ACCURACY OR CORRECTNESS OF ANY INTERPRETATIONS, AND WE SHALL NOT, EXCEPT IN THE CASE OF GROSS OR WILLFUL NEGLIGENCE ON OUR PART, BE LIABLE OR RESPONSIBLE FOR ANY LOSS, COSTS, DAMAGES OR EXPENSES INCURRED OR SUSTAINED BY ANYONE RESULTING FROM ANY INTERPRETATION MADE BY ANY OF OUR OFFICERS, AGENTS OR EMPLOYEES. THESE INTERPRETATIONS ARE ALSO SUBJECT TO OUR GENERAL TERMS AND CONDITIONS AS SET OUT IN OUR CURRENT PRICE SCHEDULE.



SENSOR MEASURE POINT TO TOOL ZERO					
CBL	37.0	FEET	AMPL	37.0	FEET
TT3	33.3	FEET	TT4	32.3	FEET
TT1	36.0	FEET	TT2	32.0	FEET
CALI	56.1	FEET	SRAT	34.5	FEET
SFL	6.4	FEET	ILD	9.4	FEET
SP	2.5	FEET	ILM	5.7	FEET
TENS	2.5	FEET	SFAR	2.5	FEET
NOIS	28.8	FEET			

FHRMETER:					
NAME	VALUE	UNIT	NAME	VALUE	UNIT
WSV1	WF1	US	DWS	16	
DSIN	5		DDEL	200	US
CDTS	100.000		DWCO	512	
DTF	189.000	US/F	DTM	55.6000	US/F
SBR	1.00000	DHMM	DSEC	3.80000	MMHO
FPHI	SPHI		MSEC	5.40000	MMHO
FNUM	1.00000		FEXP	2.00000	
BS	7.82500	IN	BHS	OPEN	
PP	NORM		DO	0.0	F

TAPE NOT MADE