

COMPANY: REICHHOLD ENERGY CORPORATION
 WELL: COLUMBIA COUNTY 23-4
 FIELD: MISSOURI
 COUNTY: COLUMBIA
 STATE: ILLINOIS
 LOCATION: 1666 NORTH 1/4 CORNER OF SOUTH 1/4 SECTION 4
 SEC: 4
 PERMANENT DATUM: GL 245.1 F
 ELEV. OF PERM. DATUM: 245.1 F
 LID MEASURED FROM PERM. DATUM: 0 FT
 DRG. MEASURED FROM: KB
 ELEVATIONS - KBI 755.5 F
 KBI 743.1 F
 PROGRAM: SGT
 SGT NO: 432179
 OTHER SERVICES: SONIC
 HNT

DATE: 29 NOV 84
 RUN NO: 1
 DEPTH-DRILLER: 3024.0 F
 DEPTH-LOGGER: 3024.0 F
 DEPTH-LOGSERIAL: 3024.0 F
 TDP LOG INTERVAL: 2000.0 F
 CASING-DRILLER: 420 F
 CASING-LOGGER: 8 5/8
 CASING: 7 7/8
 BIT SIZE: 3024 F

RECEIVED - FLD
 JAN 18 1985
 SACRAMENTO

TYPE FLUID IN HOLE: GEL/LIQUID
 DENSITY: 9.7 LB/G
 VISCOSITY: 40.0 S
 FLUID LOSS: 5.0
 SOURCE OF SAMPLE: FLOWLINE
 RM: 3.010 DHMM AT 52.0 DEGF
 RMC: 3.350 DHMM AT 42.0 DEGF
 RMC: 3.720 DHMM AT 47.0 DEGF
 SOURCE RMF/RMC: MEAS/MEAS
 RM AT BHT: 1.675 DHMM AT 99.0 DEGF
 RM AT BHT: 1.548 DHMM AT 99.0 DEGF
 RMC AT BHT: 1.895 DHMM AT 99.0 DEGF

TIME CIRC. STOPPED: 18100 11-28
 TIME LOGGER ON BTM: 12145 11-29

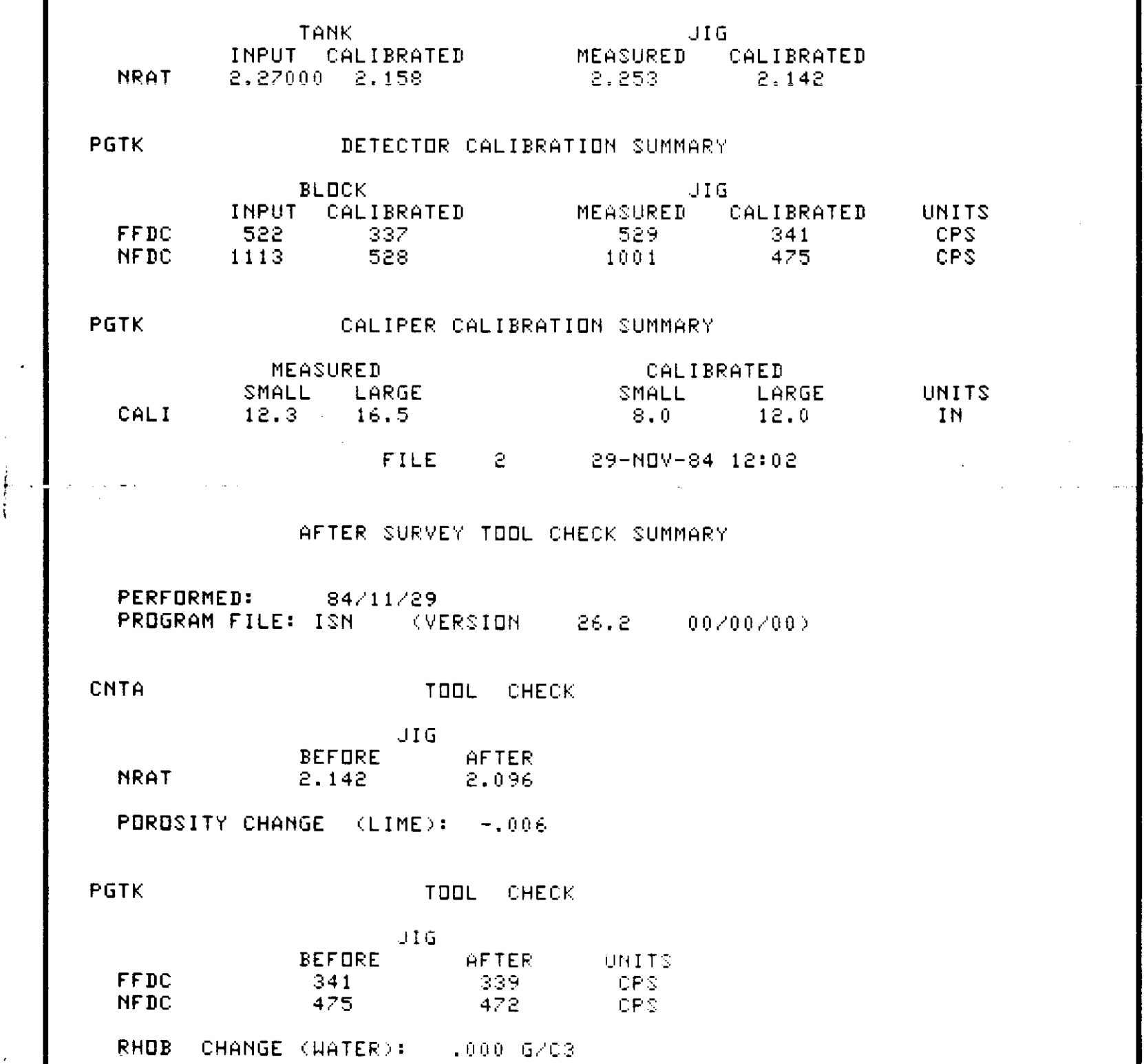
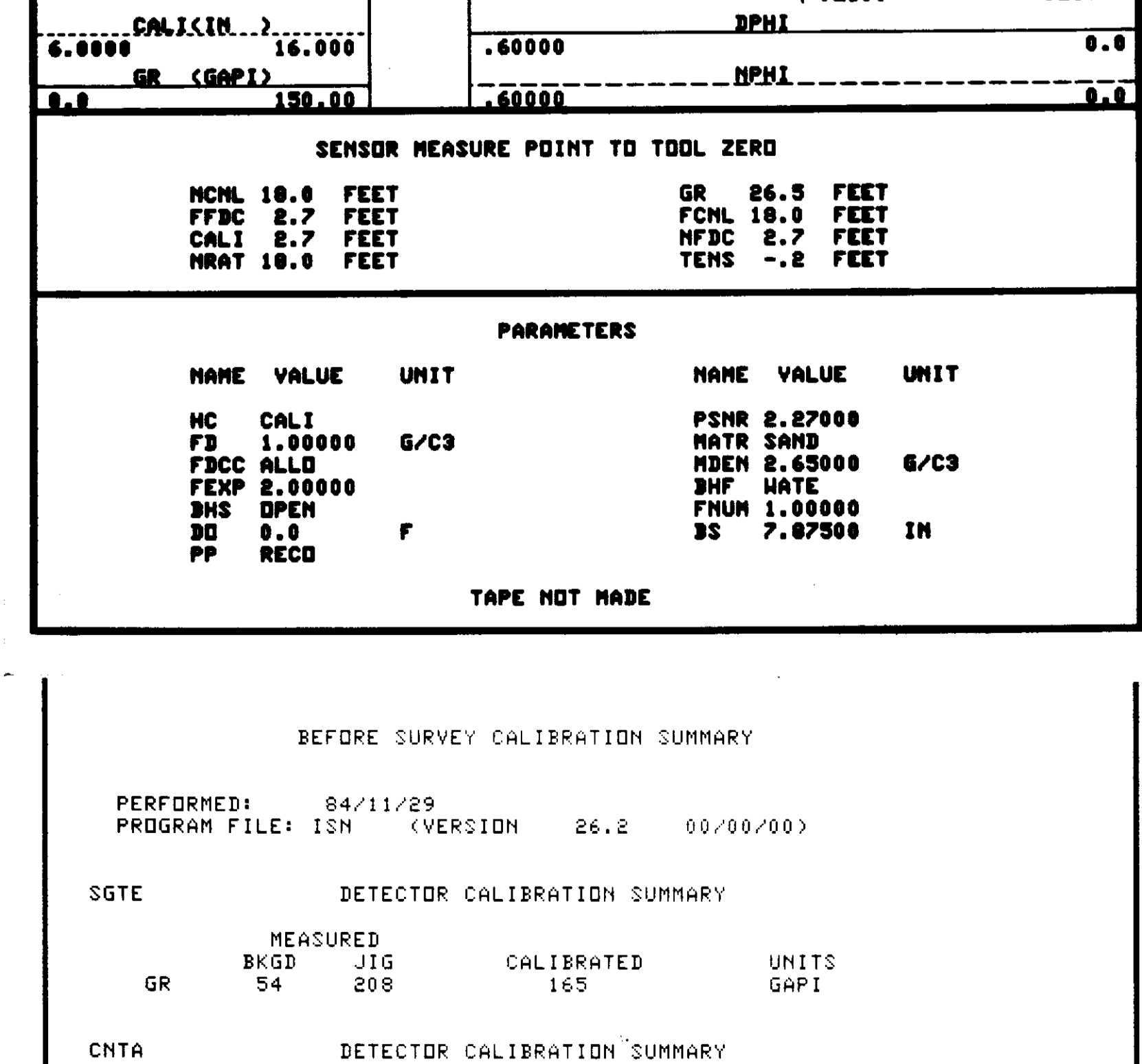
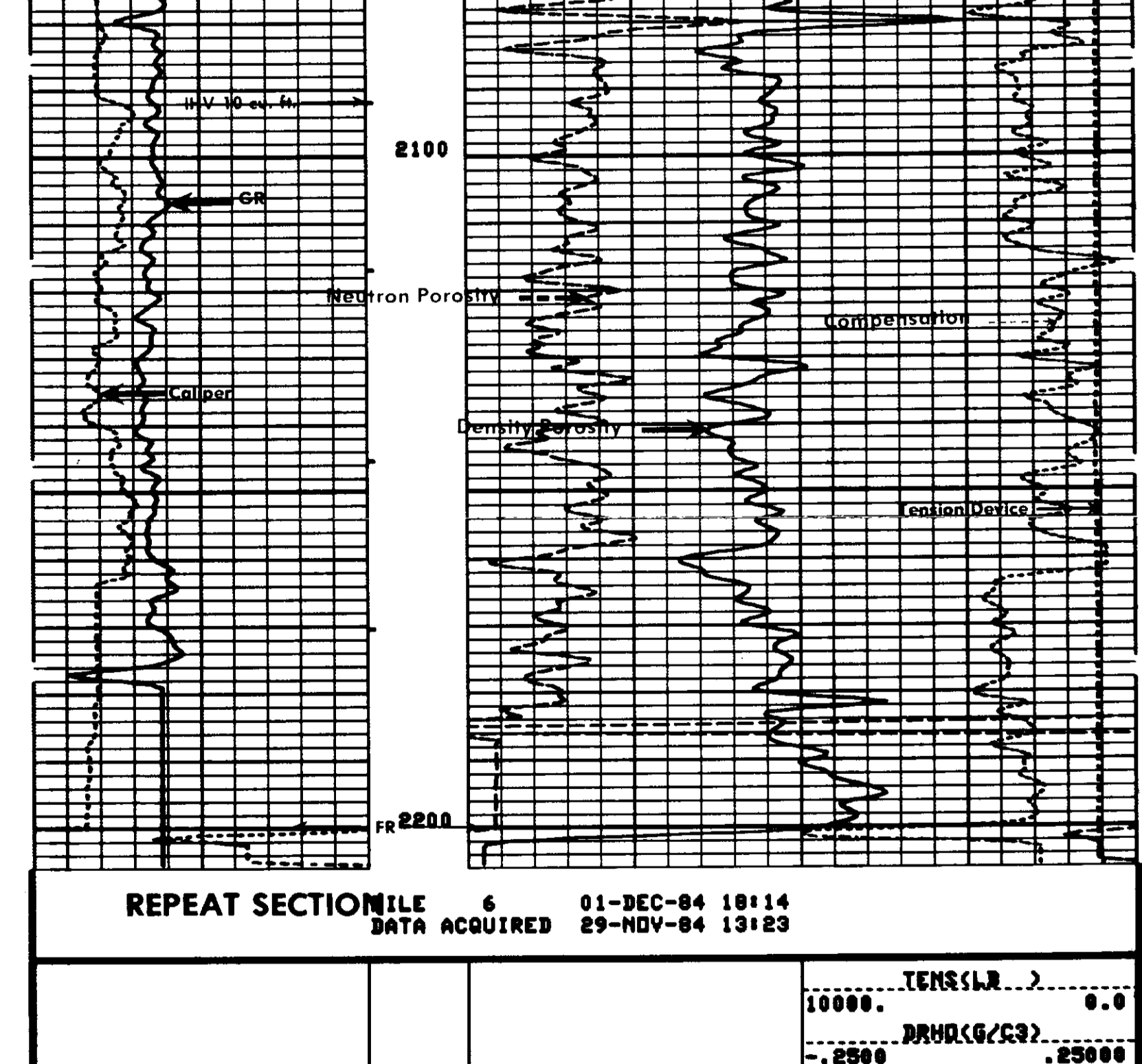
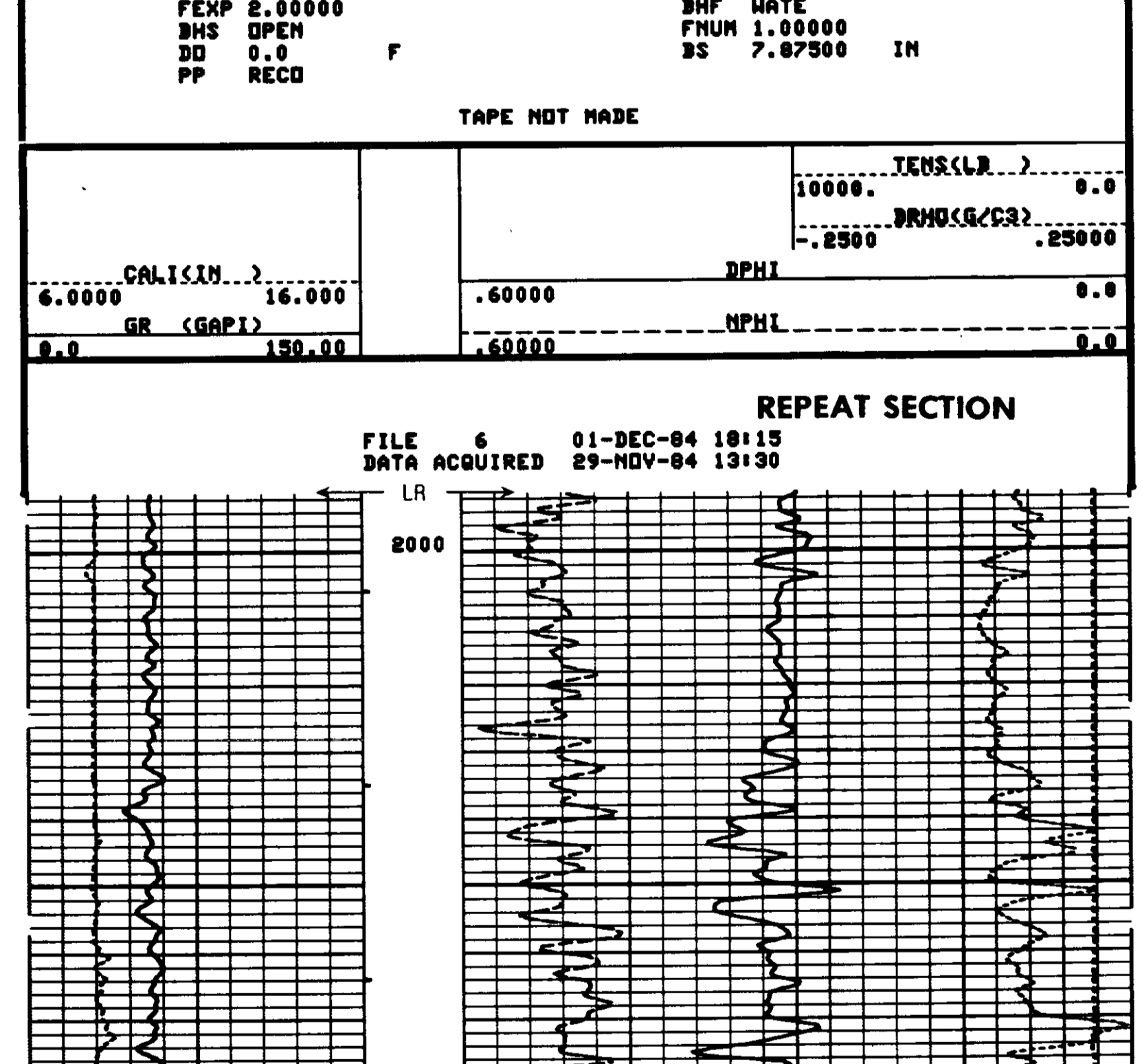
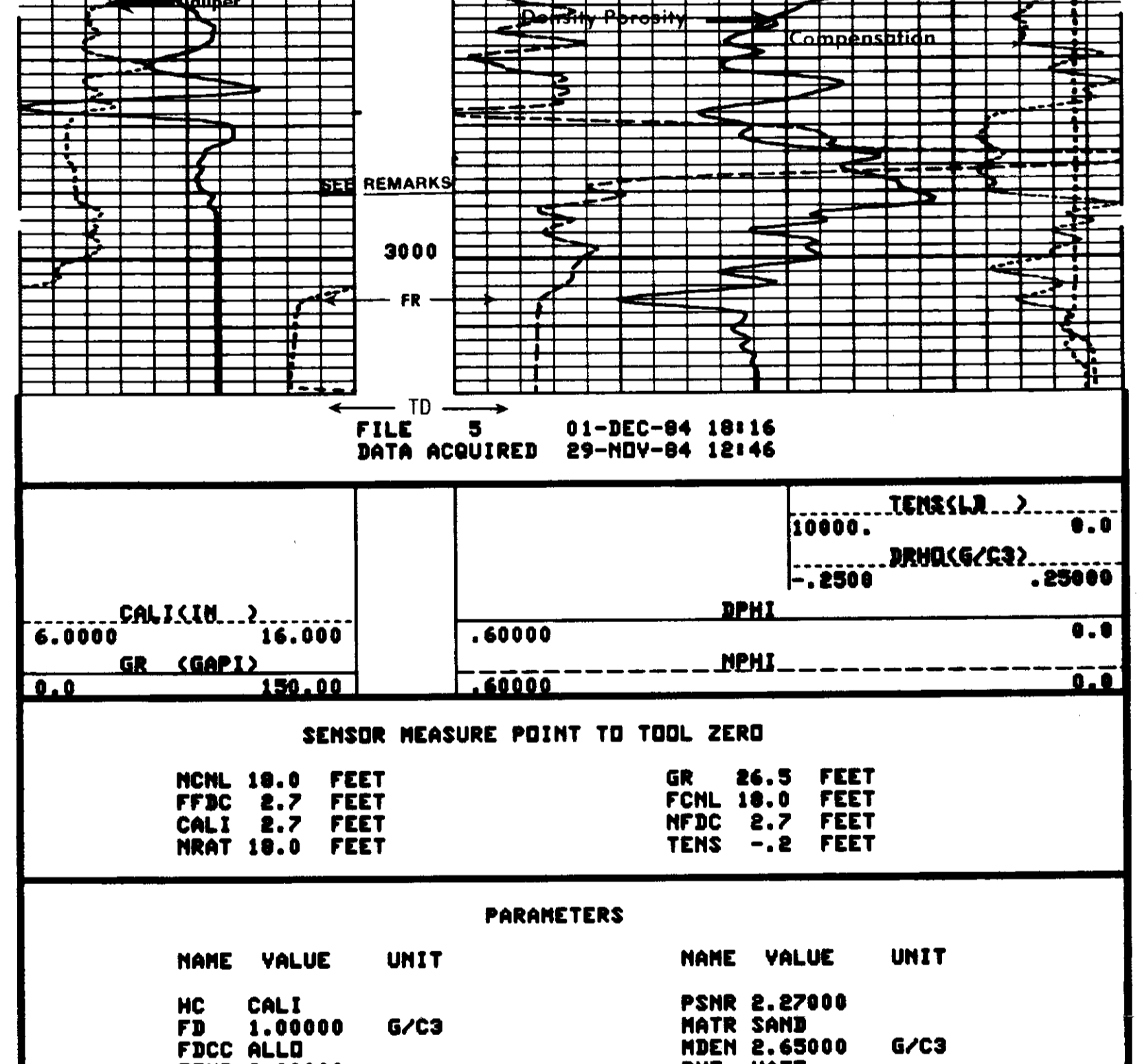
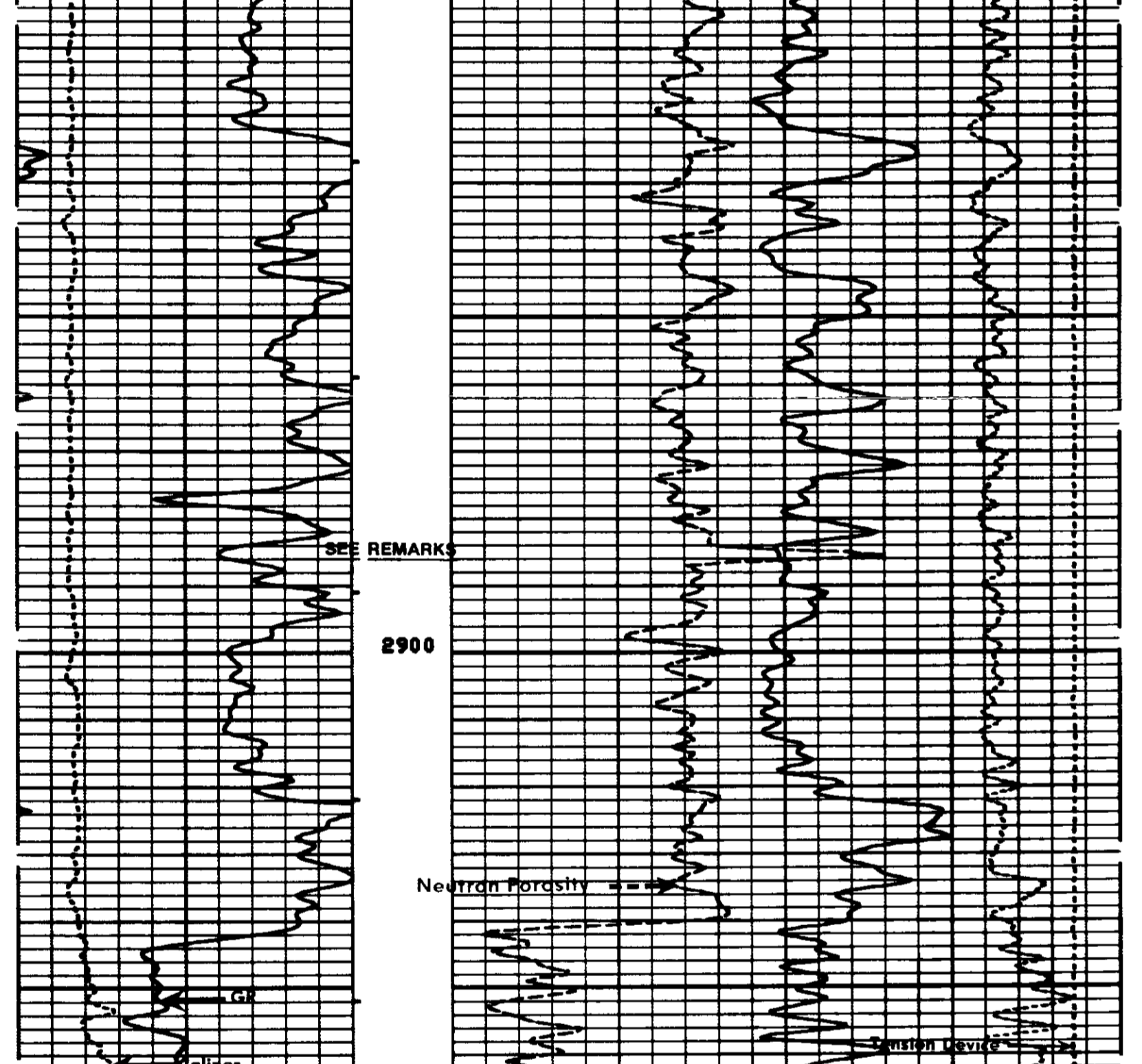
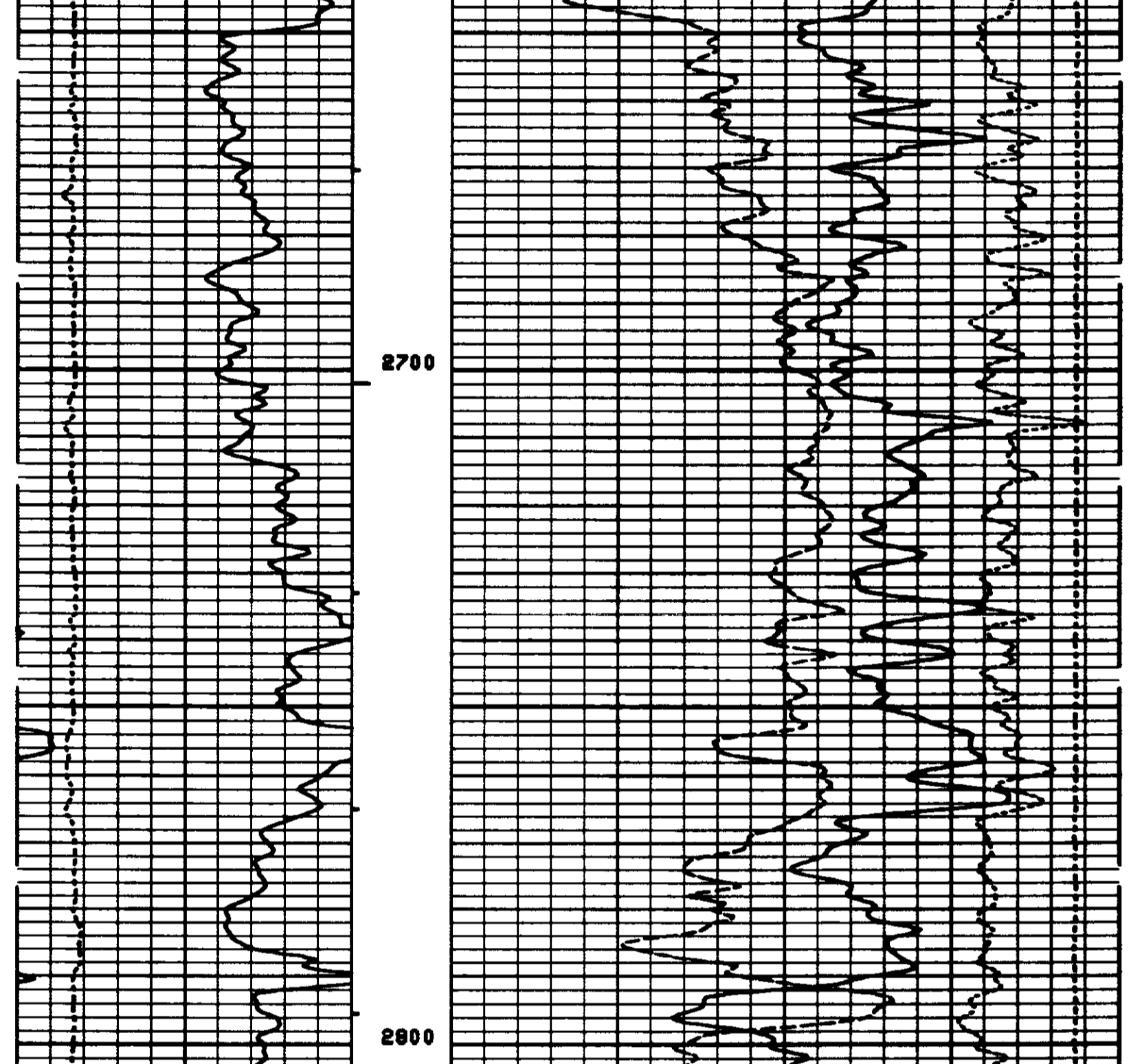
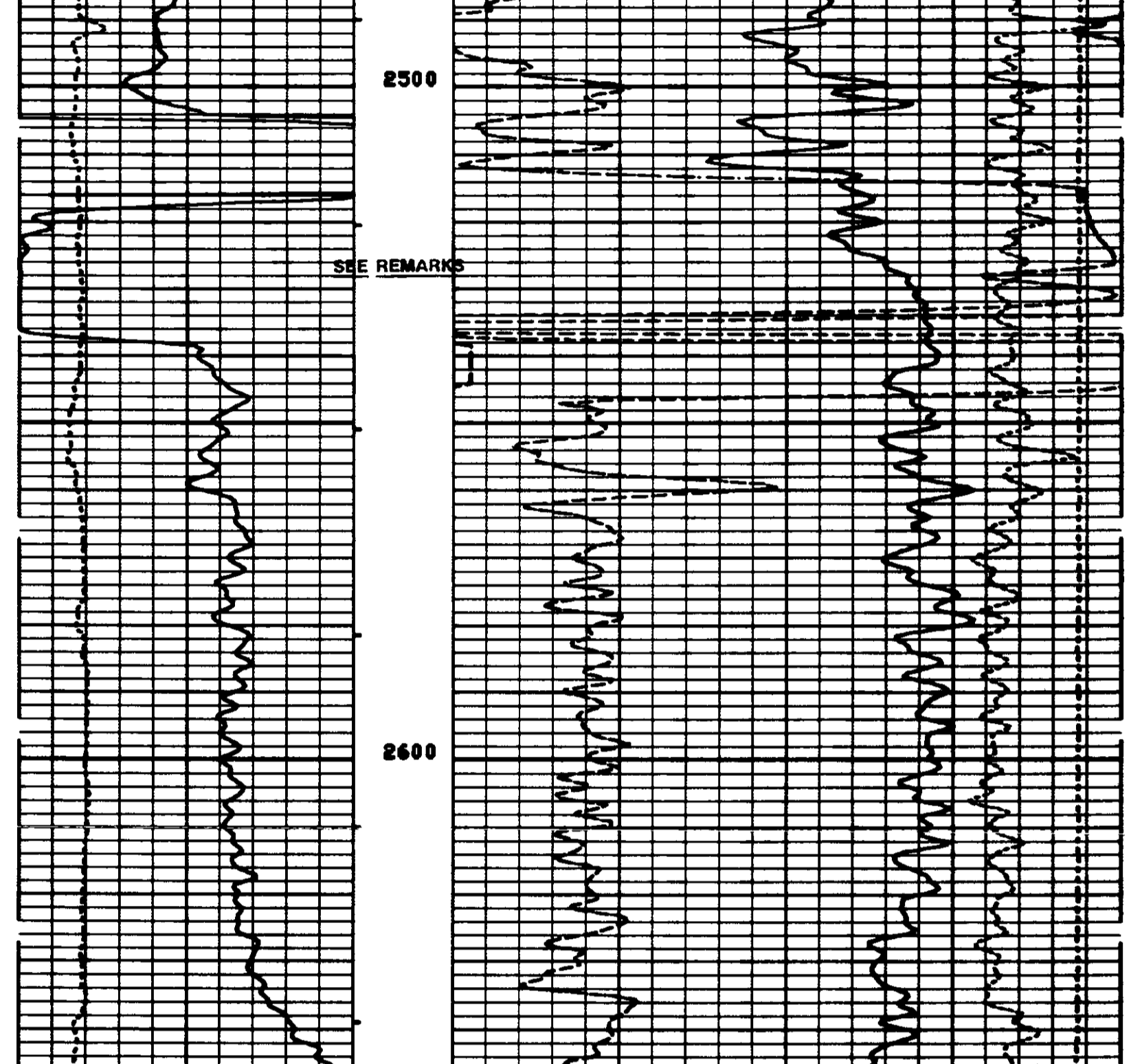
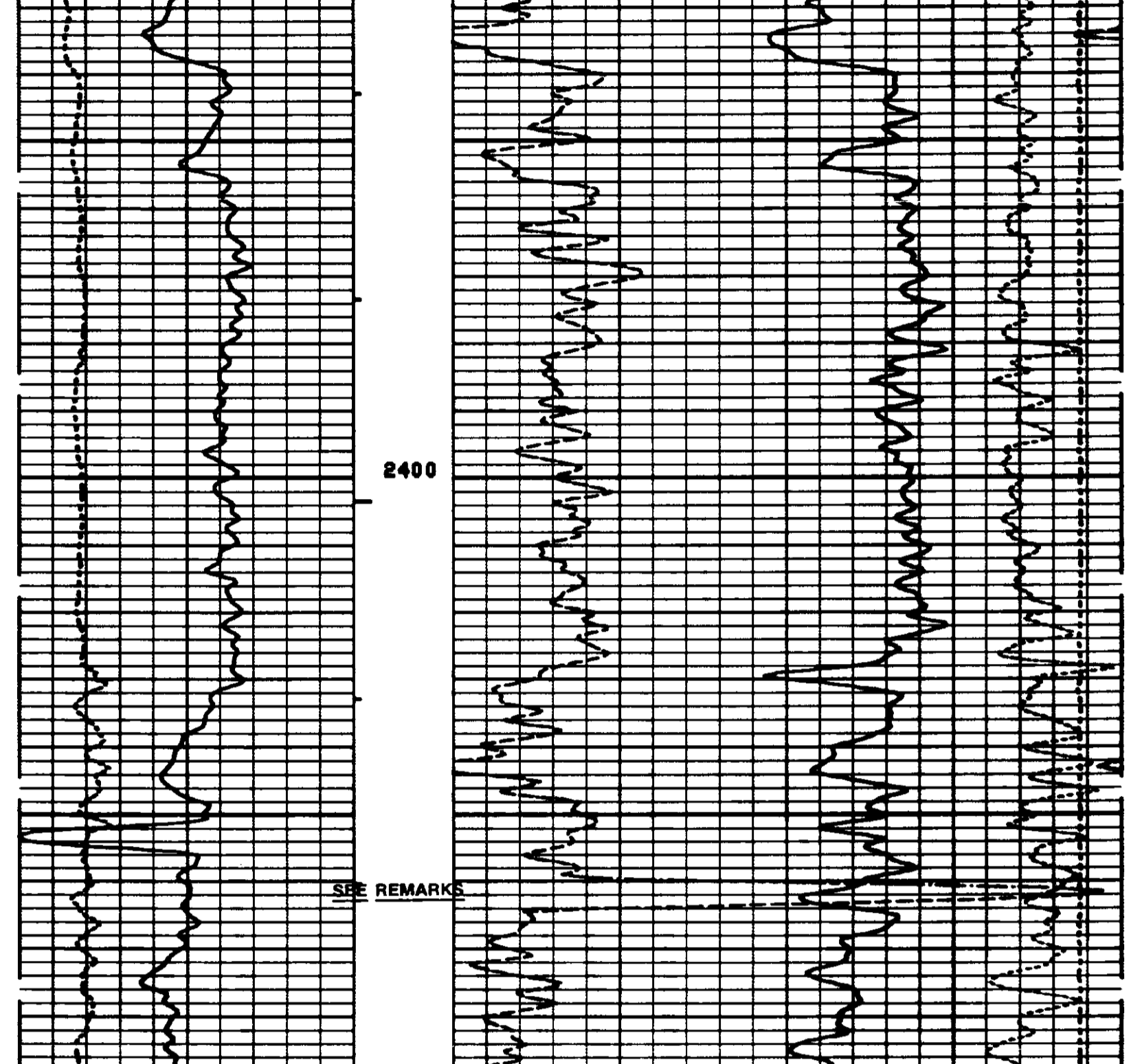
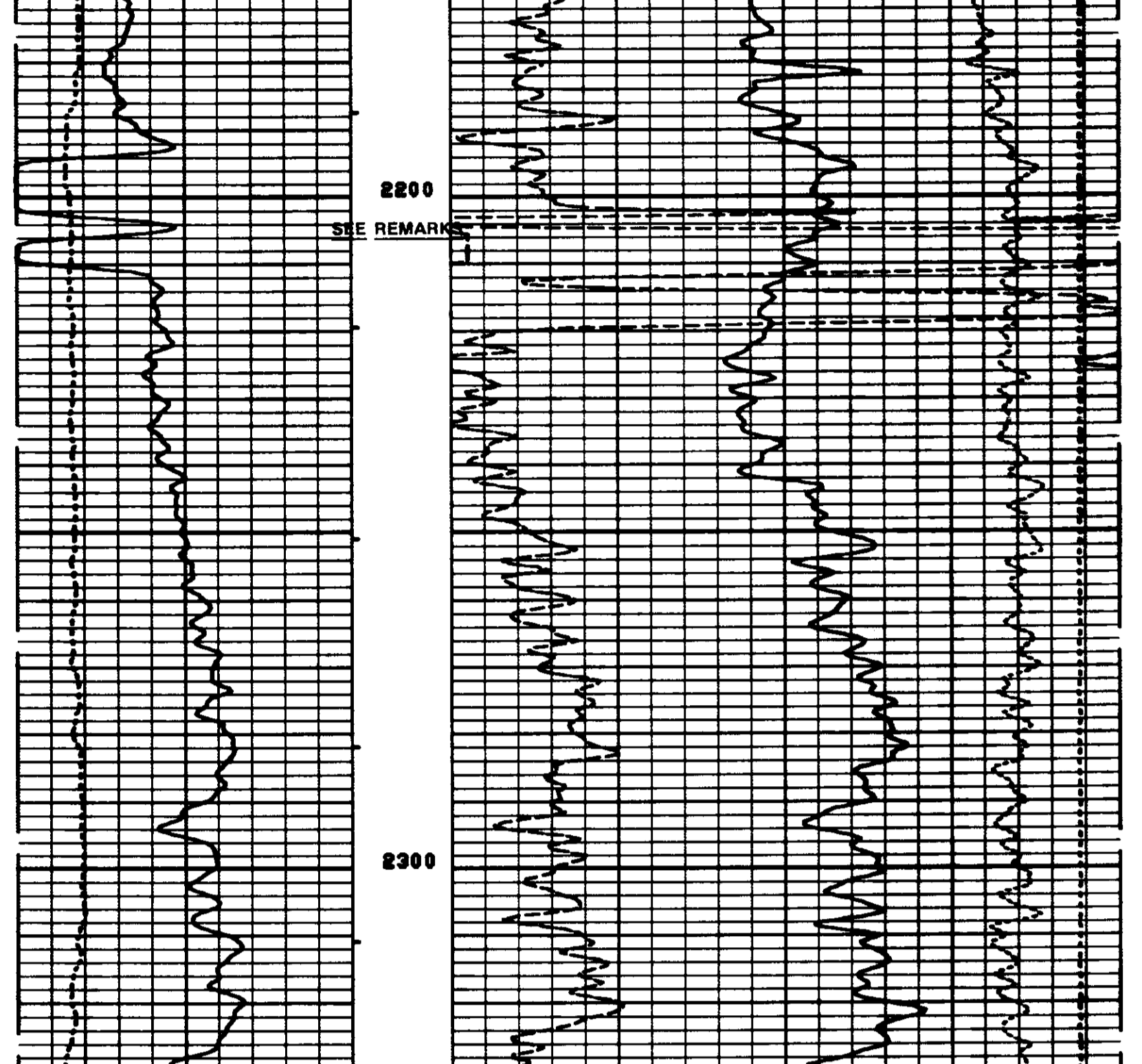
MAX. REC. TEMP: 99.0 DEGF

LOGGING UNIT NO: 0179
 LOGGING UNIT LOC: SACRAMENTO
 RECORDED BY: SUTER
 WITNESSED BY: ALGER/MEYER

REMARKS: FDC RECALIBRATED AND RECOMPUTED UPON RETURN TO SHOP
 SALINITY: 500 PPM CL-
 REPEATS DONE AT TDP DUE TO HOLE CONDITIONS

EQUIPMENT NUMBERS-
 CNC 1208 CNB 3200 PGS 679 PDM 2045
 GSR 8016 SFT 477 NLM 699 SGC 1528

ALL INTERPRETATIONS ARE OPINIONS BASED ON INFERENCE FROM ELECTRICAL OR OTHER MEASUREMENTS AND WE CANNOT, AND DO NOT GUARANTEE THE ACCURACY OR CORRECTNESS OF ANY INTERPRETATIONS, AND WE SHALL NOT, EXCEPT IN THE CASE OF GROSS OR WILLFUL NEGLIGENCE ON OUR PART, BE LIABLE OR RESPONSIBLE FOR ANY LOSS, COSTS, DAMAGES OR EXPENSES INCURRED OR SUSTAINED BY ANYONE RESULTING FROM ANY INTERPRETATION MADE BY ANY OF OUR OFFICERS, AGENTS OR EMPLOYEES. THESE INTERPRETATIONS ARE ALSO SUBJECT TO OUR GENERAL TERMS AND CONDITIONS AS SET OUT IN OUR CURRENT PRICE SCHEDULE.



BEFORE SURVEY CALIBRATION SUMMARY
 PERFORMED: 84/11/29
 PROGRAM FILE: ISN (VERSION 26.2 00/00/00)

SGTG DETECTOR CALIBRATION SUMMARY
 MEASURED BKGD JIG CALIBRATED UNITS
 GR 54 208 165 GAPI

CNTA DETECTOR CALIBRATION SUMMARY
 TANK INPUT CALIBRATED MEASURED CALIBRATED
 NRAT 2.27000 2.158 2.253 2.142

PGTK DETECTOR CALIBRATION SUMMARY
 BLOCK INPUT CALIBRATED MEASURED CALIBRATED UNITS
 FFDC 522 337 529 341 CPS
 NFDC 1113 528 1001 475 CPS

PGTK CALIPER CALIBRATION SUMMARY
 MEASURED SMALL LARGE CALIBRATED SMALL LARGE UNITS
 CALI 12.3 16.5 8.0 12.0 IN

AFTER SURVEY TOOL CHECK SUMMARY
 PERFORMED: 84/11/29
 PROGRAM FILE: ISN (VERSION 26.2 00/00/00)

CNTA TOOL CHECK
 BEFORE JIG AFTER UNITS
 NRAT 2.142 2.096 CPS
 POROSITY CHANGE (LIME): -.006

PGTK TOOL CHECK
 BEFORE JIG AFTER UNITS
 FFDC 341 339 CPS
 NFDC 475 472 CPS
 RHOB CHANGE (WATER): .000 G/CC

SHDP SUMMARY
 PERFORMED: 84/11/08
 PROGRAM FILE: SHDP (VERSION 26.2 03/11/17)

CNTA DETECTOR CALIBRATION SUMMARY
 TANK MEASURED CALIBRATED MEASURED CALIBRATED
 NRAT 2.270 2.158 2.308 2.194
 (CNC:1208, CNB:3200)

SHDP SUMMARY
 PERFORMED: 84/12/01
 PROGRAM FILE: SHDP (VERSION 26.2 03/11/17)

PGTK DETECTOR CALIBRATION SUMMARY
 BLOCK MEASURED CALIBRATED MEASURED CALIBRATED UNITS
 FFDC 461 337 529 341 CPS
 NFDC 880 528 1000 475 CPS
 (PGS:699, PDM:1176, GSR:8016, SFT:477)