

COMPANY: ARCO EXPLORATION COMPANY
 WELL: "COLUMBIA COUNTY" #23-19
 FIELD: MIST-HILDCAT
 COUNTY: COLUMBIA
 STATE: OREGON
 NATION: U.S.A.
 LOCATION: 2097.6'E AND 386.66'S
 SEC: 19 TWP: 6N RGE: 5W
 PERMANENT DATUM: GL
 ELEV. OF PERM. DATUM: 754.1 F
 ELEVATIONS-
 LOG MEASURED FROM: KB
 DRI: 764.1 F
 DRUG. MEASURED FROM: KB
 DATUM: GL
 G.I.: 754.1 F

DATE: 10 JUL 85
 RUN NO: 1
 DEPTH-DRILLER: 3435.0 F
 DEPTH-LOGGER: 3436.0 F
 BTH. LOG INTERVAL: 3430.0 F
 TOP LOG INTERVAL: 480.0 F
 CASING-DRILLER: 480 F
 CASING: 9 5/8"
 RECEIVED - PTD
 JUL 11 1985
 DEPTH: 3435 F
 BIT SIZE: 8 3/4"

OTHER SERVICES-
 DDC BNC
 FID-CNL-GR
 HDI
 CST
 API SERIAL NO:
 36-009-001

TYPE FLUID IN HOLE: LIGNITE/DESCO
 DENSITY: 10.3 LB/G
 VISCOSITY: 45.0 S
 PH: 8.8
 FLUID LOSS: 4.2 C3
 SOURCE OF SAMPLE: FLOWLINE
 RM: 1.770 OHMM AT 75.0 DEGF
 RMF: 2.450 OHMM AT 65.0 DEGF
 RMC: 2.330 OHMM AT 65.0 DEGF
 MEASURED/MEASURED
 RM AT BHT: 1.170 OHMM AT 117. DEGF
 RMF AT BHT: 1.422 OHMM AT 117. DEGF
 RMC AT BHT: 1.352 OHMM AT 117. DEGF
 TIME CIRC. STOPPED: 7:10 1130
 TIME LOGGER ON BTH.: 1513
 MAX. REC. TEMP: 117.0 DEGF
 LOGGING UNIT NO: 8057
 LOGGING UNIT LOC: SACRAMENTO
 RECORDED BY: ANDERSEN
 WITNESSED BY: BUIKEMA

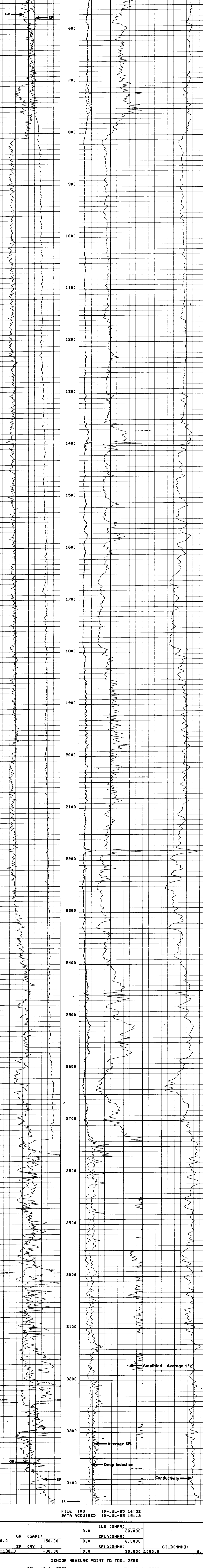
REMARKS:
 950 PPM CHLORIDES
 INDUCTION AND SONIC RUN IN COMBINATION.

EQUIPMENT NUMBERS-
 DIS-EC 567 DIC-DA 552 MCD-D 1237 SLS-RC 252
 SLC-FA 1321 IEM-BD 304 SLM-DA 383

ALL INTERPRETATIONS ARE OPINIONS BASED ON INFERENCE FROM ELECTRICAL OR OTHER MEASUREMENTS AND HE CANNOT, AND HE SHALL NOT GUARANTEE THE ACCURACY OR CORRECTNESS OF ANY INTERPRETATIONS, AND HE SHALL NOT, EXCEPT IN THE CASE OF GROSS OR HILLFUL NEGLIGENCE ON OUR PART, BE LIABLE OR RESPONSIBLE FOR ANY LOSS, COSTS, DAMAGES OR EXPENSES INCURRED OR SUSTAINED BY ANYONE RESULTING FROM ANY INTERPRETATION MADE BY ANY OF OUR OFFICERS, AGENTS OR EMPLOYEES. THESE INTERPRETATIONS ARE ALSO SUBJECT TO OUR GENERAL TERMS AND CONDITIONS AS SET OUT IN OUR CURRENT PRICE SCHEDULE.

FILE 103 10-JUL-85 16:57
 DATA ACQUIRED 10-JUL-85 16:08

GR (GAPI)	0.0	150.00	ILD (OHMM)	0.0	30.000	SFLA(OHMM)	0.0	6.0000	CILD(MMHD)	0.0
SP (MV)	-130.0	-30.00	SFLA(OHMM)	0.0	30.000	1000.0				0.0



FILE 103 10-JUL-85 16:52
 DATA ACQUIRED 10-JUL-85 15:13

GR (GAPI)	0.0	150.00	ILD (OHMM)	0.0	30.000	SFLA(OHMM)	0.0	6.0000	CILD(MMHD)	0.0
SP (MV)	-130.0	-30.00	SFLA(OHMM)	0.0	30.000	1000.0				0.0

SENSOR MEASURE POINT TO TOOL ZERO

CBL 43.9 FEET	AMPL 43.9 FEET
TT3 40.1 FEET	TT4 39.1 FEET
TT1 42.9 FEET	TT2 43.9 FEET
GR 64.0 FEET	SRAT 41.4 FEET
ILD 9.4 FEET	CALI 31.8 FEET
ILM 5.7 FEET	SFL 6.4 FEET
SPAR 2.5 FEET	SP 2.5 FEET
NOIS 35.6 FEET	TENS 2.5 FEET

PARAMETERS

NAME	VALUE	UNIT	NAME	VALUE	UNIT
MSV1	WF1		DWS	16	
DSIN	5	US	DDEL	200	US
CDTS	100.000		DMCO	512	
DTF	189.000	US/F	DTM	56.0000	US/F
SBR	1.00000	DHMM	DSEC	6.00000	MMHD
FPHI	SPHI		MSEC	6.80000	MMHD
BS	8.75000	IN	BHS	OPEN	
SPDR	0.0		DO	0.0	F
PP	NDRM				

TAPE NOT MADE