

Schlumberger

DUAL INDUCTION 2"

CSU

COMPANY: REICHOLD ENERGY CORP.

WELL: COLUMBIA COUNTY #23-22

FIELD: MIST

COUNTY: COLUMBIA

STATE: OREGON

LOCATION: 303.79'S & 1268.59'E

SEC: 22

PERMANENT DATUM: SL

ELEV. OF PERM. DATUM: 565.8'

LOG MEASURED FROM: KB

DRLG. MEASURED FROM: KB

DATE: 16 DEC 83

DEPTH-DRILLER: 2028.0'

DEPTH-LOGGER: 2028.0'

TOP LOG INTERVAL: 335.0'

CASING-DRILLER: 335'

CASING-LOGGER: 335'

BIT SIZE: 7.875

DEPTH: 2028'

RECEIVED

FEB 7 1984

DEPT OF GEOLOGY

600 N. W. 10TH ST.

OTHER SERVICES-

SONIC

HDT

PROGRAM

TAPE NO:

24.2

SERVICE

ORDER NO:

383419

TYPE FLUID IN HOLE: GEL/LIGND
 DENSITY: 12.2 LB/G
 VISCOSITY: 62.0 S
 PH: 9.5
 FLUID LOSS: 4.6 C3
 SOURCE OF SAMPLE: FLOWLINE
 RM: 1.780 DHMM AT 65.0 DEGF
 RMF: 2.240 DHMM AT 42.0 DEGF
 RMC: 3.750 DHMM AT 42.0 DEGF
 SOURCE RMF/RMC: MEASURED/MEASURED
 RM AT BHT: 1.059 DHMM AT 114. DEGF
 RMF AT BHT: 0.907 DHMM AT 114. DEGF
 RMC AT BHT: 1.518 DHMM AT 114. DEGF

TIME CIRC. STOPPED: 1400 12/16
 TIME LOGGER ON BTM.: 1730 12/16

MAX. REC. TEMP: 114.0 DEGF

LOGGING UNIT NO: 8126
 LOGGING UNIT LOC: SACRAMENTO
 RECORDED BY: BORATKO
 WITNESSED BY: ALGER

REMARKS:

EQUIPMENT NUMBERS-

DIS 1342 DIC 1359 SLS 1082 SLC 1321

ALL INTERPRETATIONS ARE OPINIONS BASED ON INFERENCES FROM ELECTRICAL OR OTHER MEASUREMENTS AND WE CANNOT, AND DO NOT GUARANTEE THE ACCURACY OR CORRECTNESS OF ANY INTERPRETATIONS, AND WE SHALL NOT, EXCEPT IN THE CASE OF GROSS OR WILLFUL NEGLIGENCE ON OUR PART, BE LIABLE OR RESPONSIBLE FOR ANY LOSS, COSTS, DAMAGES OR EXPENSES INCURRED OR SUSTAINED BY ANYONE RESULTING FROM ANY INTERPRETATION MADE BY ANY OF OUR OFFICERS, AGENTS OR EMPLOYEES. THESE INTERPRETATIONS ARE ALSO SUBJECT TO OUR GENERAL TERMS AND CONDITIONS AS SET OUT IN OUR CURRENT PRICE SCHEDULE.

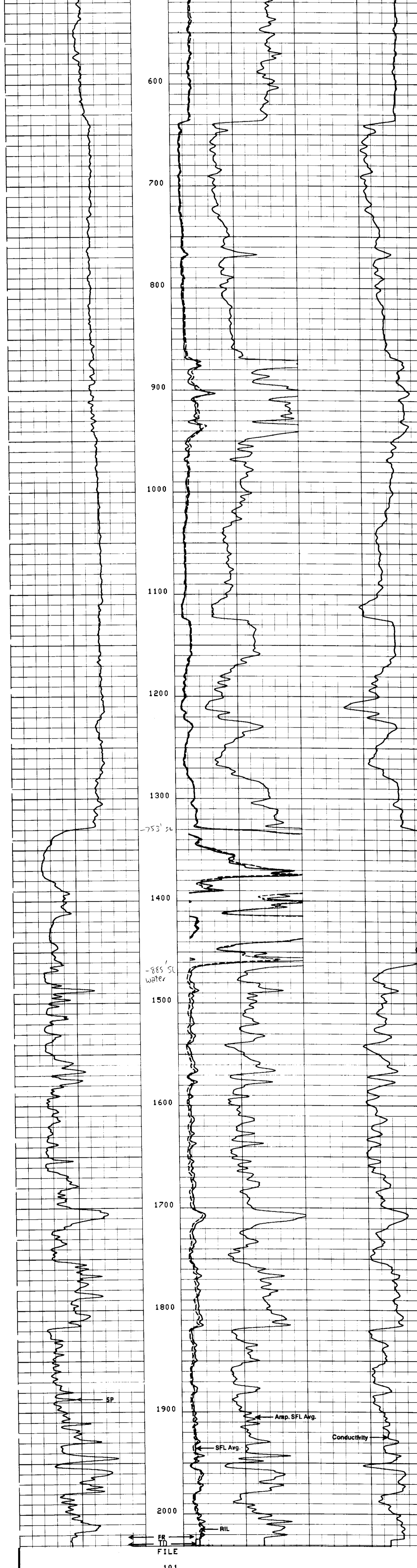
FILE

101

SP (MV)	ILD (DHMM)	30.000	CILD (MMHD)
	SFLA (DHMM)	6.0000	
-100.0	0.0	0.0	0.0

FILE

101



FILE

101

SP (MV)	ILD (DHMM)	30.000	CILD (MMHD)
	SFLA (DHMM)	6.0000	
-100.0	0.0	0.0	0.0

SENSOR MEASURE POINT TO TENSION REFERENCE POINT

CBL	43.9	FEET	AMPL	43.9	FEET
TT3	40.2	FEET	TT4	39.2	FEET
TT1	42.9	FEET	TT2	43.9	FEET
CALI	31.8	FEET	SRAT	41.4	FEET
SFL	6.4	FEET	ILD	9.4	FEET
SP	2.5	FEET	ILM	5.8	FEET
TENS	.0	FEET	SPAR	2.5	FEET
NOIS	35.7	FEET			

PARAMETERS

NAME	VALUE	UNIT	NAME	VALUE	UNIT
DDEL	200	US	BS	7.87500	IN
DWCO	512		DSIN	5	US
DTM	55.6000	US/F	CDTS	100.000	
DSEC	6.30000	MMHD	DTF	189.000	US/F
MSEC	7.20000	MMHD	SBR	1.00000	DHMM
BHS	OPEN		FBPHI	SPHI	
PP	NORM		DO	0.0	F

TAPE NOT MADE

COMPANY: REICHOLD ENERGY CORP.

WELL: COLUMBIA COUNTY #23-22

FIELD: MIST

COUNTY: COLUMBIA STATE OREGON

SCHL. FR 2022.0

SCHL. TD 2028.0

DRLR. TD 2028.0

Elev: KB 577.2

DF N/A

GL 565.8