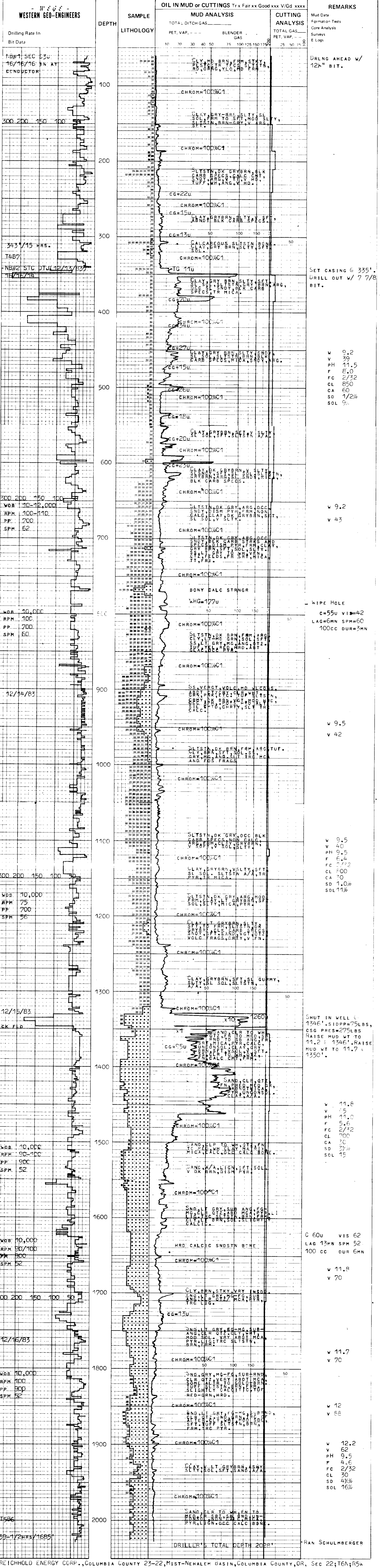


WELL COLUMBIA COUNTY 23-22 COMPANY REICHOLD ENERGY CORP. AREA MIST LOCATION 303.79'S & 1768.59'E OF W 1/4 CORNER OF SEC 22, T6N; R5W COUNTY, STATE COLUMBIA COUNTY, OR	<b>- W E G E -</b> <b>WESTERN GEO-ENGINEERS</b> "A SERVICE TO THE OIL AND GAS INDUSTRY"	<b>LITHOLOGY SYMBOLS</b> 	<b>REMARKS</b> WELL ELEV. GL. 565.81' KB. 577.21' SALINITY IN PPM CL FILTRATE IN CC/30 MIN. GAS TRAP AGITATOR TYPE MUD LIGNOSULFONATE (BEAVER DRILLING FLUIDS) TAYLOR DRILLING RIG #5 <b>CASING</b> 8-5/8 To 335' 5-1/2 To 1529' TO
<b>MUD DATA</b> W WEIGHT V VISCOSITY F FILTRATE FC FILTER CAKE SD SAND IN %	<b>LEGEND</b> S SALINITY R RESISTIVITY RF FILTRATE RESISTIVITY <b>BIT DATA</b> NB NEW BIT RRB RERUN BIT	<b>OTHER DATA</b> CB CORE BIT WLCB WIRE LINE CB CR CIRCULATE RETURNS NR NO RETURN DST DRILL STEM TEST TG TRIP GAS CG CONNECTION GAS C CARBIDE GAS [ ] CORE INTERVAL	
DATE 12/11/83 to 12/16/83		DEPTH 60' to 2028'	ENGINEERS EBERHART THOMAS DUVALL



REICHOLD ENERGY CORP., COLUMBIA COUNTY 23-22, MIST-NEHALEM BASIN, COLUMBIA COUNTY, OR, SEC 22; T6N; R5W