

Schlumberger COMPANY N/AHAMA AND WEAGANT ENERGY CO. WELL SASQUATCH 23-31-65

LOG INFORMATION: Log No. 2277.0, Date: 06-JUN-92, Log Interval: 12/20/91, Log Length: 484.0 F, Log Start: 0.0 F, Log End: 484.0 F

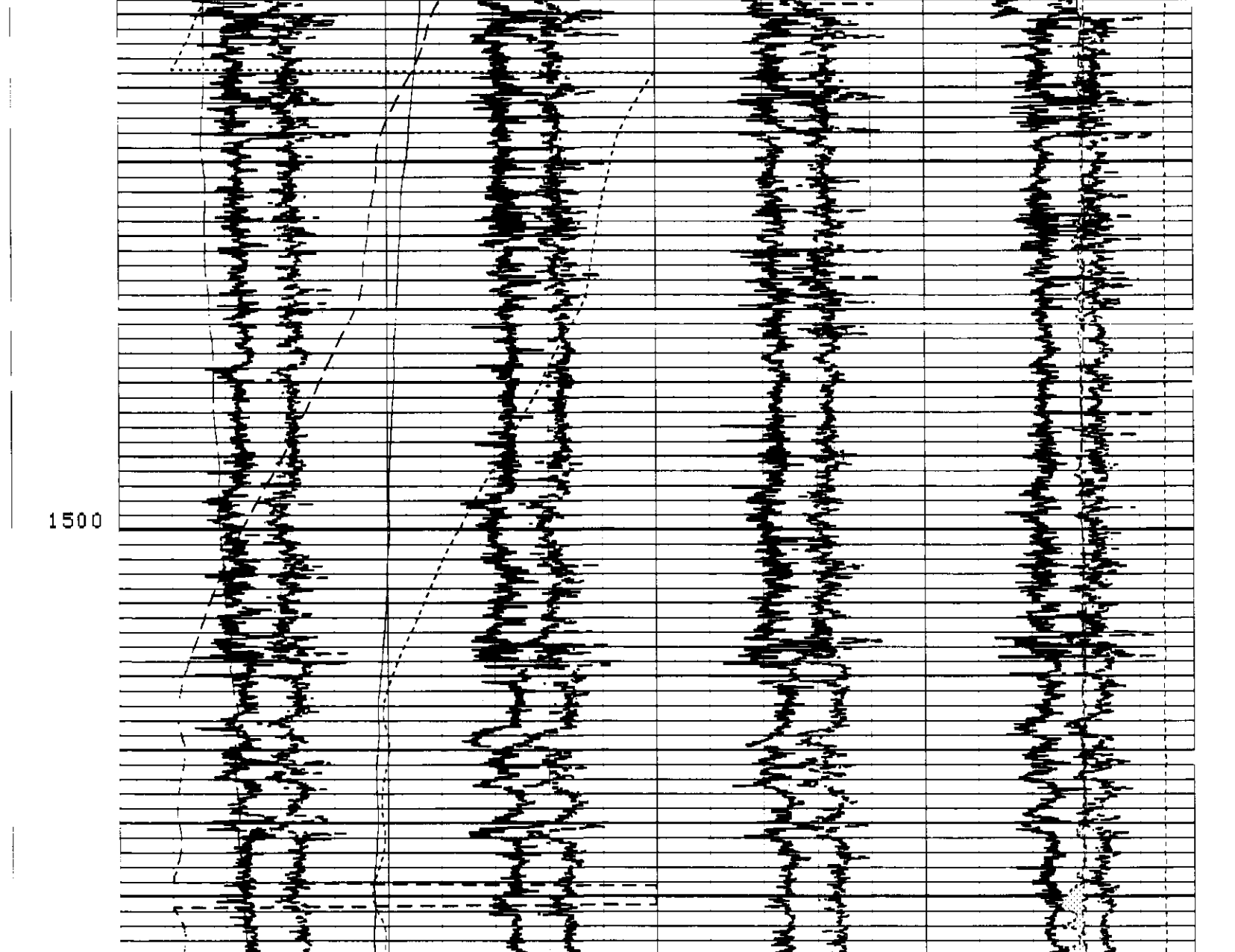
LOG INFORMATION: Log No. 2277.0, Date: 06-JUN-92, Log Interval: 12/20/91, Log Length: 484.0 F, Log Start: 0.0 F, Log End: 484.0 F

LOG INFORMATION: Log No. 2277.0, Date: 06-JUN-92, Log Interval: 12/20/91, Log Length: 484.0 F, Log Start: 0.0 F, Log End: 484.0 F

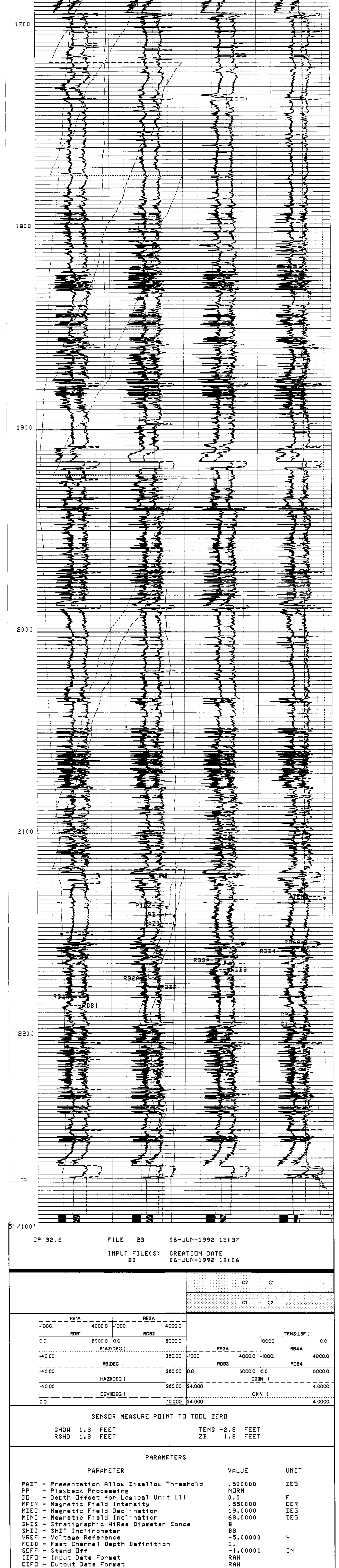
All interpretations are opinions based on inferences from electrical or other measurements and we cannot, and do not, guarantee the accuracy or correctness of any interpretations, and we shall not, except in the case of gross or willful negligence or our part, be liable or responsible for any loss, costs, damages or expenses incurred or sustained by anyone resulting from any interpretations made by any of our officers, agents or employees.

Table with 2 columns: Run No., Services Order No., Drilling Fluid Level, Salinity, Rmc @ BHT, Logging Speed

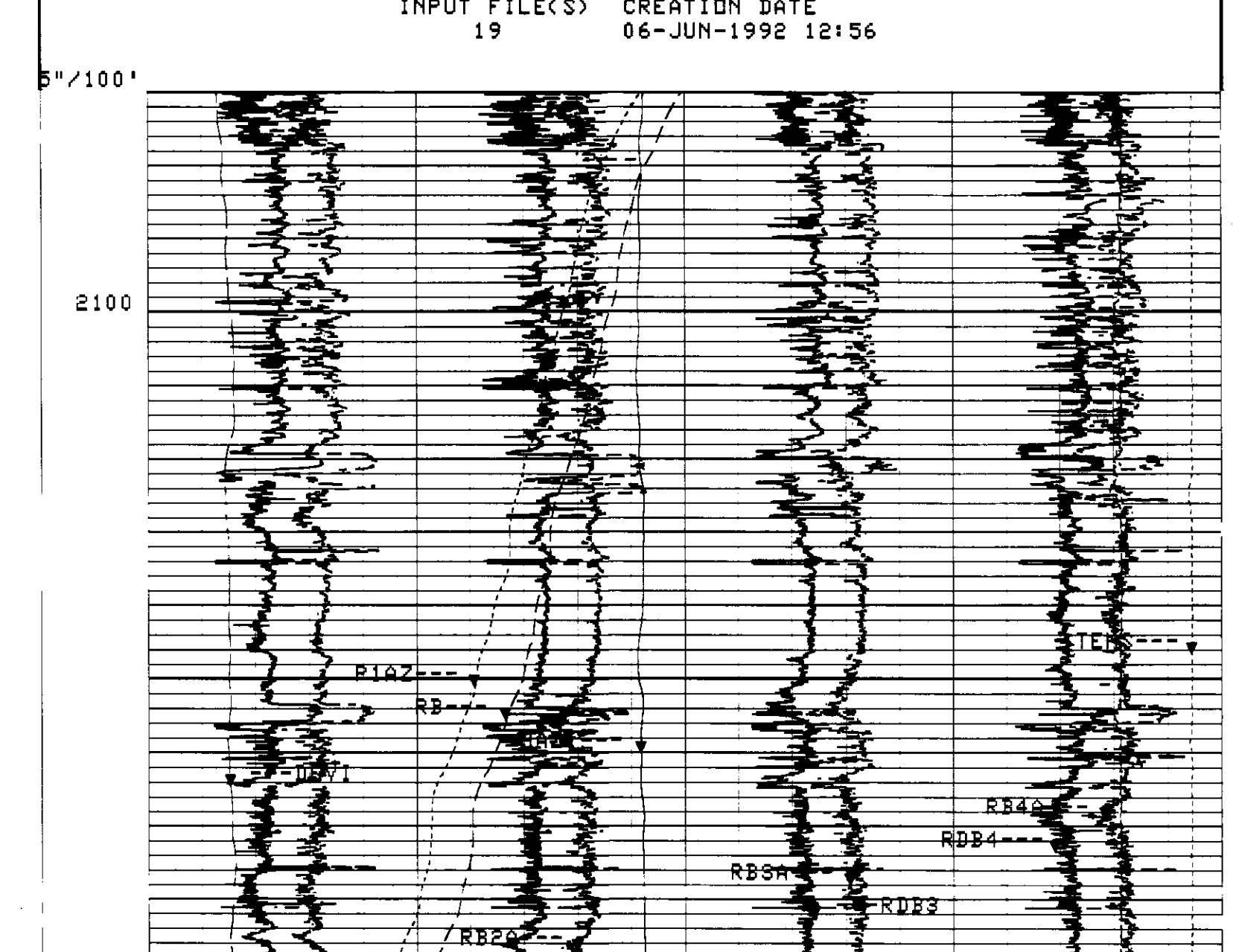
Table with 2 columns: EQUIPMENT DATA, Tool Number 1-12, REMARKS: THANK YOU FOR CHOOSING SCHLUMBERGER



HAZI PRESENTATION DISALLOWED WHEN DEVI IS LESS THAN .500000 DEG
RB PRESENTATION DISALLOWED WHEN DEVI IS LESS THAN .500000 DEG
SPEED CORRECTION NOT APPLIED
NO KNUCKLE JOINT IS USED (SDFP = -1)



CP 32.6 FILE 23 06-JUN-1992 13:49
INPUT FILE(S) 20 CREATION DATE 06-JUN-1992 13:06

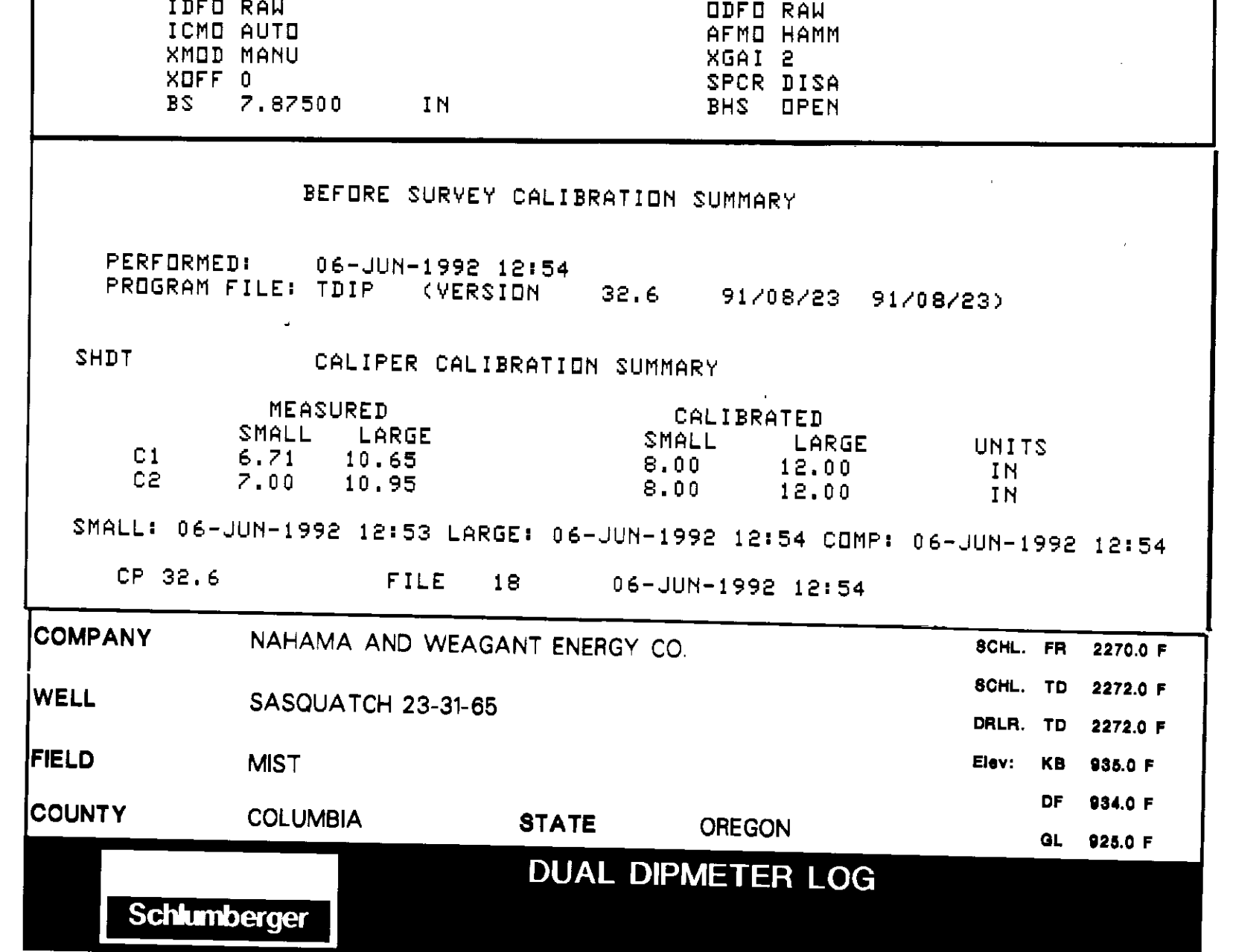


CP 32.6 FILE 23 06-JUN-1992 13:49
INPUT FILE(S) 20 CREATION DATE 06-JUN-1992 13:06

SENSOR MEASURE POINT TO TODD ZERO
SHDW 1.3 FEET TENS -2.8 FEET
RSHD 1.3 FEET ZB 1.3 FEET

PARAMETERS table listing PADT, PP, IDP, MFIN, MDEC, MINC, SHDS, SHDI, VREF, FCDD, SDFP, IDF, DDFD, ICMD, AFMD, XMD, XGI, XGFI, XGFF, FCD, SPCR, BS, BHS with their respective values and units.

REPEAT SECTION
CP 32.6 FILE 22 06-JUN-1992 13:36
INPUT FILE(S) 19 CREATION DATE 06-JUN-1992 12:56



CP 32.6 FILE 22 06-JUN-1992 13:36
INPUT FILE(S) 19 CREATION DATE 06-JUN-1992 12:56

CP 32.6 FILE 22 06-JUN-1992 13:36
INPUT FILE(S) 19 CREATION DATE 06-JUN-1992 12:56

CALIBRATION SUMMARY
SPEED CORRECTION NOT APPLIED
NO KNUCKLE JOINT IS USED (SDFP = -1)



CP 32.6 FILE 9 06-JUN-1992 08:28 (UP)
2.33333"/MIN

CP 32.6 FILE 9 06-JUN-1992 08:26 (UP)
2.33333"/MIN

CP 32.6 FILE 9 06-JUN-1992 08:26 (UP)
2.33333"/MIN

SENSOR MEASURE POINT TO TODD ZERO
SHDW 1.3 FEET TENS -4.0 FEET
RSHD 1.3 FEET ZB 1.3 FEET

PARAMETERS table listing NAME, VALUE, UNIT for PADT, MFIN, MDEC, SHDS, SHDI, IDP, ICMD, XMD, XGI, XGFI, XGFF, FCD, SPCR, BS, BHS, SPEE, MDEC, SHDS, VREF, DDFD, AFMD, XGI, SPCR, DISA, BHS.

BEFORE SURVEY CALIBRATION SUMMARY
PERFORMED: 06-JUN-1992 12:54
PROGRAM FILE: TDIP (VERSION 32.6 91/08/23 91/08/23)

SHDT CALIPER CALIBRATION SUMMARY table with columns: MEASURED, CALIBRATED, UNITS for SMALL and LARGE diameters.

CP 32.6 FILE 18 06-JUN-1992 12:54

COMPANY N/AHAMA AND WEAGANT ENERGY CO.
WELL SASQUATCH 23-31-65
FIELD MIST
COUNTY COLUMBIA STATE OREGON

SCHL. FR 2270.0 F
DRLR. TD 2270.0 F
Elev: KB 934.0 F
DF 934.0 F
GL 924.0 F