

COMPANY	NAHAMA AND WEAGANT ENERGY CO.	FIELD	MIST	STATE	OREGON
WELL	SASQUATCH 23-31-65	COUNTY	COLUMBIA	LOCAT:ON	1970N & 989W
LOGGING SPEED	3600.0 F/HR	DATE	06-JUN-1992	LOGGERS	FROM S. 1/4 CORNER
LOGGING DEPTH	2272.0 F	PERM. DATE	GL	SECT.	31
LOGGING INTERVAL	2272.0 F	LOGG. FROM	KB	TWP.	6N
LOGGING INTERVAL	2272.0 F	LOGG. TO	KB	RANGE	5W
LOGGING INTERVAL	2272.0 F	LOGG. TO	KB	SHOOT	
LOGGING INTERVAL	2272.0 F	LOGG. TO	KB	Elev.	925.0 F
LOGGING INTERVAL	2272.0 F	LOGG. TO	KB	Elev. above Perm. Datum	100 F
LOGGING INTERVAL	2272.0 F	LOGG. TO	KB	Elev. N.B. 835.0 F	
LOGGING INTERVAL	2272.0 F	LOGG. TO	KB	D.F. 834.0 F	
LOGGING INTERVAL	2272.0 F	LOGG. TO	KB	G.L. 825.0 F	

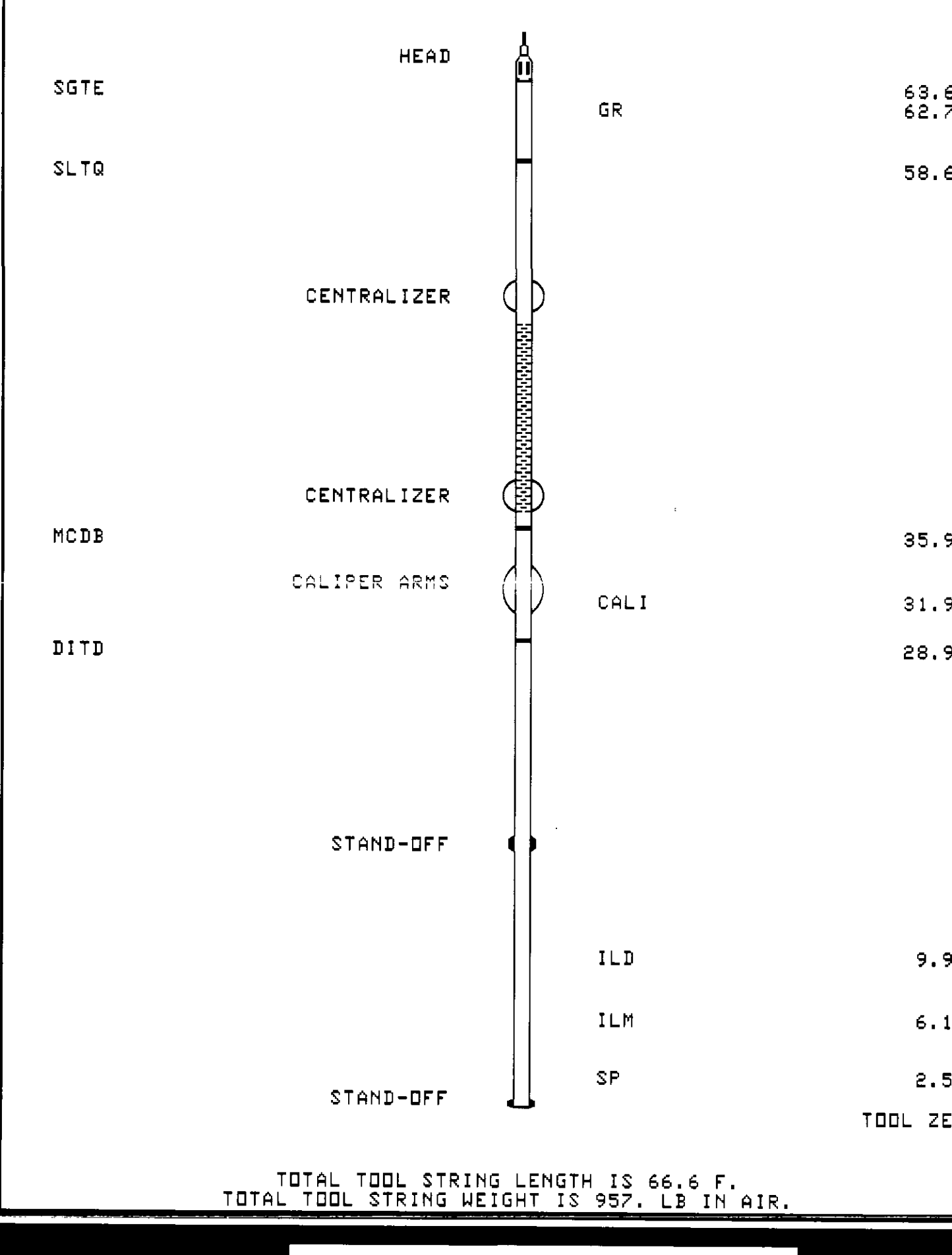
The well name, locator and borehole reference data were furnished by the customer.

All interpretations are opinions based on inferences from electrical or other measurements and we cannot, and do not guarantee the accuracy or correctness of any interpretations, and we shall not, except in the case of gross or willful negligence or our part, be liable or responsible for any loss, costs, damages or expenses incurred or sustained by anyone resulting from any interpretations made by any of our officers, agents or employees. These interpretations are also subject to Clause 4 of our General Terms and Conditions as set out in our current Price Schedule.

Run No.	ONE
Service Order No.	585171
Drilling Fluid Level	100 F
Salinity	550.0 PPM
Rmf @ BHT	3.507 OHMM @ 85.0 DEGF
Rmo @ BHT	2.174 OHMM @ 85.0 DEGF
Logging Speed	3600.0 F/HR
EQUIPMENT DATA	
Tool Number 1	DIS-EC 288
Tool Number 2	DIC-DA 1078
Tool Number 3	MCD-B 180
Tool Number 4	SLS-WA 178
Tool Number 5	SLC-MA 189
Tool Number 6	SGT-E 587
Tool Number 7	IEM-BD 304
Tool Number 8	SLM-DA 443
Tool Number 9	NLM-BC 456
Tool Number 10	
Tool Number 11	
Tool Number 12	

REMARKS:
 TWO 1.5" STANDOFFS RUN ON DUAL INDUCTION TOOL
 TWO CEMZ CENTRALIZERS RUN ON SONIC SONDE

LOGGING TOOL STRING SKETCH

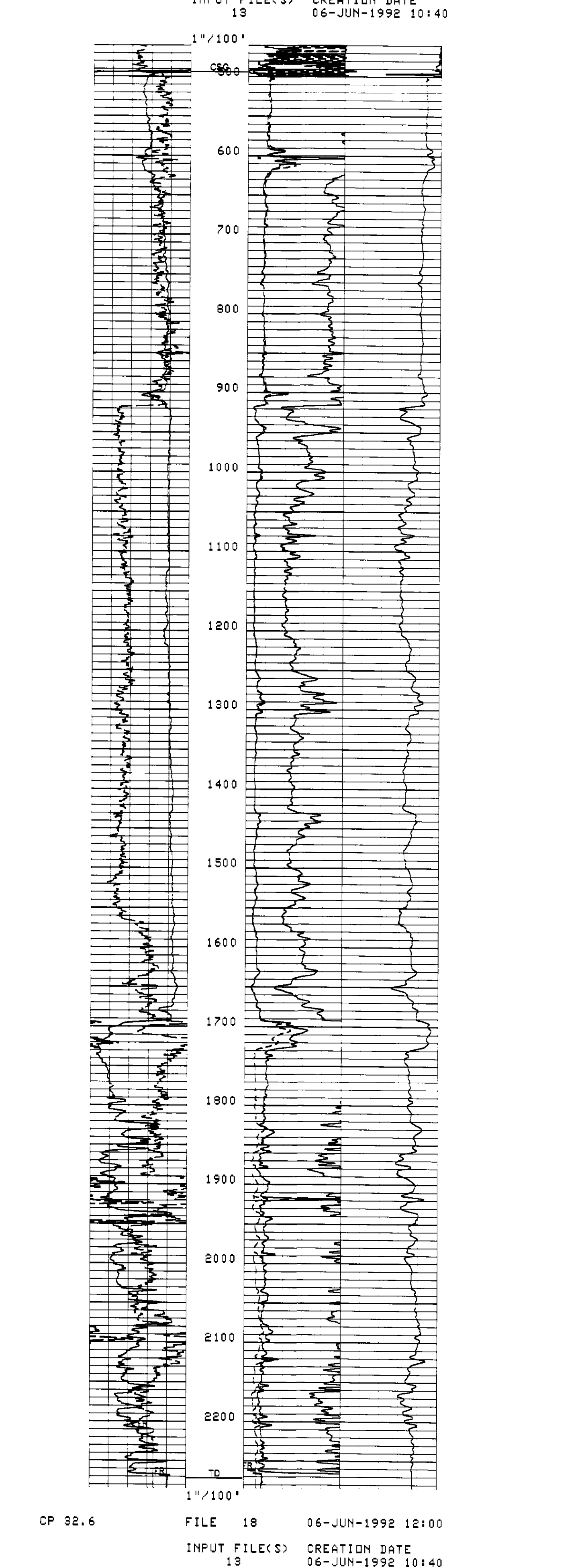


TOTAL TOOL STRING LENGTH IS 66.6 F.
 TOTAL TOOL STRING WEIGHT IS 957.0 LB IN AIR.

MAIN LOG

DUMM	-4.000	1.0000	SFLA(OHMM)	0.0	8.0000
DUMM	-3.000	2.0000	SFLA(OHMM)	0.0	30.0000
DUMM	-2.000	3.0000	ILD(OHMM)	0.0	30.0000
DUMM	-1.000	4.0000	CILD(MM/M)	1000.0	0.0
GR(GAPI)	0.0	150.00			
SP(MV)	-20.0	-20.00			
DUMM	-1.000	1.0000			

CP 32.6 FILE 18 06-JUN-1992 12:04
 INPUT FILE(S) CREATION DATE
 13 06-JUN-1992 10:40



CP 32.6 FILE 18 06-JUN-1992 12:00
 INPUT FILE(S) CREATION DATE
 13 06-JUN-1992 10:40

DUMM	-4.000	1.0000	SFLA(OHMM)	0.0	8.0000
DUMM	-3.000	2.0000	SFLA(OHMM)	0.0	30.0000
DUMM	-2.000	3.0000	ILD(OHMM)	0.0	30.0000
DUMM	-1.000	4.0000	CILD(MM/M)	1000.0	0.0
GR(GAPI)	0.0	150.00			
SP(MV)	-20.0	-20.00			
DUMM	-1.000	1.0000			

COMPANY	NAHAMA AND WEAGANT ENERGY CO.	SCHL. FR	2266.0 F
WELL	SASQUATCH 23-31-65	SCHL. TD	2272.0 F
FIELD	MIST	DRLR. TD	2272.0 F
COUNTY	COLUMBIA	Elev. KB	835.0 F
STATE	OREGON	DF	834.0 F
		GL	825.0 F