

COMPANY: REICHHOLD ENERGY CORPORATION
 WELL: COLUMBIA COUNTY #23-35
 RECEIVED - FTLD
 JUL 17 1985

FIELD: MIST
 COUNTY: COLUMBIA
 STATE: DEEGM
 NATID: USA
 LOCATION: 896.5'E & 134.5"N OF
 H 1/4 CORNER OF
 SEC: 35 TWP: 7N RGE: 5W

PERMANENT DATUM: GL
 ELEV. OF PERM. DATUM: 1329.7'
 LOG MEASURED FROM: KB
 DRG. MEASURED FROM: KB
 ELEVATIONS:-
 ELEV. OF PERM. DATUM: 1329.7'
 ELEV. OF PERM. DATUM: 1329.7'
 DRG. MEASURED FROM: KB
 DRG. MEASURED FROM: KB

DATE: 8 JUN 85
 RUN NO: 1

DEPTH-DRILLER: 3593.0'
 DEPTH-LOGGER: 3548.0'
 BIT. LOG INTERVAL: 3513.0'
 TOP LOG INTERVAL: 698.0'
 CASING-DRILLER: 660'
 CASING-LOGGER: 638'
 BIT SIZE: 7 7/8"
 BIT DEPTH: 3593'

OTHER SERVICES:-
 DIL
 HDT

PROGRAM
 TAPE NO:
 SERIAL NO:
 SURVEY NO:
 432418

TYPE FLUID IN HOLE: LIGNOSULFONATE
 DENSITY: 9.1 LB/G
 VISCOSITY: 40.0 S
 PH: 9.0
 FLUID LOSS: 7.4 C3
 SOURCE OF SAMPLE: FLOWLINE
 RM: 2.890 DHMM AT 58.0 DEGF
 RMC: 2.820 DHMM AT 57.0 DEGF
 RMC: 1.650 DHMM AT 54.0 DEGF
 SOURCE RMF/RMC: MEAS/MEAS
 RM AT BHT: 1.823 DHMM AT 96.0 DEGF
 RMC AT BHT: 1.752 DHMM AT 96.0 DEGF
 RMC AT BHT: .977 DHMM AT 96.0 DEGF

TIME CIRC. STOPPED: 3145 6/8
 TIME LOGGER ON BTH.: 7120 6/8

MAX. REC. TEMP: 96.0 DEGF

LOGGING UNIT NO: 8057
 LOGGING UNIT LOC: SACRAMENTO
 RECORDED BY: MAYER
 WITNESSED BY: THOMAS

REMARKS:

DIL AND SONIC WERE RUN IN COMBINATION.
 FINS AND CHEZ WERE USED FOR CENTRALIZATION.
 CHLORIDES: 450PPM
 CALIPER IS READING LOW DUE TO HOLE DEVIATION.
 LOG WAS RUN AT 1800'/HR TO REDUCE NOISE ON SONIC.

EQUIPMENT NUMBERS-

DIS 567 DIC 552 SLS 252 SLC 1470
 MCD 1237 IEM 232 SLS 383

ALL INTERPRETATIONS ARE OPINIONS BASED ON INFERENCES FROM ELECTRICAL OR OTHER MEASUREMENTS AND WE CANNOT, AND DO NOT GUARANTEE THE ACCURACY OR CORRECTNESS OF ANY INTERPRETATIONS, AND WE SHALL NOT, EXCEPT IN THE CASE OF GROSS OR WILLFUL NEGLIGENCE ON OUR PART, BE LIABLE OR RESPONSIBLE FOR ANY LOSS, COSTS, DAMAGES OR EXPENSES INCURRED OR SUSTAINED BY ANYONE RESULTING FROM ANY INTERPRETATION MADE BY ANY OF OUR OFFICERS, AGENTS OR EMPLOYEES. THESE INTERPRETATIONS ARE ALSO SUBJECT TO OUR GENERAL TERMS AND CONDITIONS AS SET OUT IN OUR CURRENT PRICE SCHEDULE.

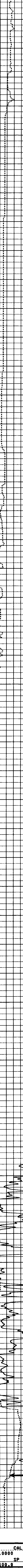
FILE 103 08-JUN-85 09:25
 DATA ACQUIRED 08-JUN-85 08:52

CHANGED PARAMETERS

NAME	VALUE	UNIT	DEPTH (F)	NAME	VALUE	UNIT	DEPTH (F)
SPDR	.0150000		916.5	SPDR	.0100000		1261.0
SPDR	.0050000		3561.5				

CALIPER ()	TENS(LR) ()
6.0000	16.0000
SP (MV)	10000.
-100.0	0.0
	DT (US/F)
	175.00
	75.0000

FILE 12 08-JUN-85 08:52



FILE 12 08-JUN-85 07:21

CALIPER ()	TENS(LR) ()
6.0000	16.0000
SP (MV)	10000.
-100.0	0.0
	DT (US/F)
	175.00
	75.0000

SENSOR MEASURE POINT TO TOOL ZERO

CBL	37.0	FEET	AMPL	37.0	FEET
TT3	33.3	FEET	DDEL	160	US
TT1	36.0	FEET	DTM	512	
CALI	56.1	FEET	SRAT	34.5	FEET
SFL	6.4	FEET	ILD	9.4	FEET
SP	2.5	FEET	ILM	5.7	FEET
TENS	2.5	FEET	SPAR	2.5	FEET
NDIS	28.8	FEET			

PARAMETERS

NAME	VALUE	UNIT	NAME	VALUE	UNIT
MSV1	WF1		DMS	16	
DSIN	5	US	DDEL	200	US
CDTS	140.000		DHCO	512	
DTF	189.000	US/F	DSEC	56.0000	US/F
SFR	1.00000	DHMM	DSEC	6.60000	MMHD
SPHI	SPHI		MSEC	7.20000	MMHD
BS	7.87500	IN	BHS	OPEN	
SPDR	.0050000				