

WELL LOGGING, INC.

COMPANY NAHAMA & WEGANT ENERGY CO.
WELL BORROW PIT #23-35-75
FIELD MIST
LOCATION 361.4' North and 236.0'
corner of Sec. 35, T7N, 85W, W. 1/4, M. 1
COUNTY, STATE Columbia, Oregon
API WELL INDEX NO.
ELEVATION 1372.49' G.L.
DATES FROM 7-31-91 TO 8-9-91
DEPTHS FROM 40' K.B. TO 90' K.B.
SPUD DATE 7-31-91
DRILLING CONTRACTOR Taylor Drilling Inc., 818 J St
MUD COMPANY Beaver Drilling Fluids
LOGGING GEOLOGISTS Jim Kastles John Riddle

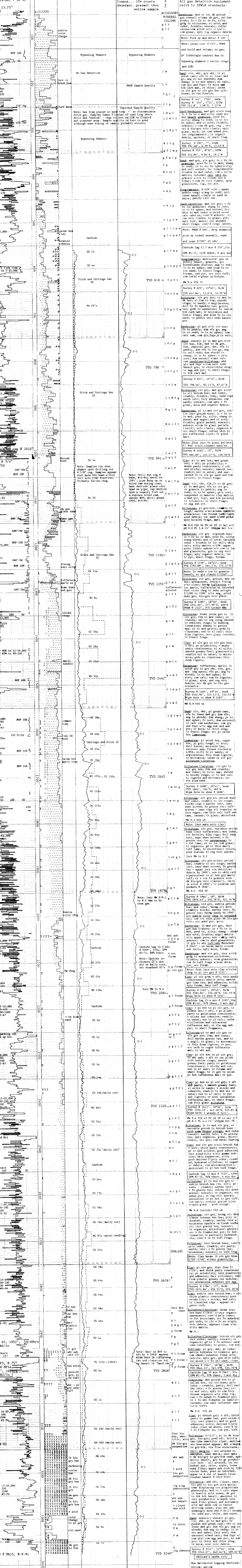
Table with columns: ABBREVIATIONS, CASING RECORD, HOLE SIZE. Includes rows for MW, VIS, FL, YP, CL, FLUID LOSS, PPM, CM, RMF, LAT, NR, PR, MUD TYPE, etc.

Legend table for rock types: SAND/SANDSTONE, CLAY, LIMESTONE, TUFF, LIGNITE, SHALE, DIATOMITE, BASALT, FOSSIL, GLAUCONITE, SILTSTONE, CONGLOMERATE, VOLCANICS, MICA, PYRITE.

OIL BASED ON LIVE OIL IN UNWASHED CUTTINGS AND PERCENT STAINING AND FLUORESCENCE OF WASHED SAMPLES.

PENETRATION ANALYSIS OF RETURNS CHROMATOGRAPH - PPM

DRILL RATE (FT/HR) drilling data



REMARKS: LITHOLOGIC DESCRIPTION, SURVEY, OTHER TEST DATA. Includes detailed descriptions of rock layers and survey data points.