

COMPANY: NAHAMMA AND WEAGANT ENERGY CO.
WELL: "JR BURGER JOHNSTON" #24-19-65 RD#1
FIELD: MIST
COUNTY: COLUMBIA
STATE: OREGON

LOCATION: 36°29'N & 127°05'W
WELL: "JR BURGER JOHNSTON" #24-19-65 RD#1
NAHAMMA AND WEAGANT ENERGY CO.

DATE: 19-AUG-1993
TIME: 10:00
WELL: MIST
COUNTY: COLUMBIA
STATE: OREGON

Drilling Measured from: KI
Permanent Datum: 36-000-000315
Elev: 6283.1 F
Elev: 6283.1 F
Elev: 6283.1 F
Elev: 6283.1 F

Run No. TWO
Service Order No. 824486
Drilling Fluid Level 5.6 F
Salinity 560 C PPM
Rmt @ BHT 285 CHMM @ 97.0 DEG
Rmo @ BHT 285 CHMM @ 97.0 DEG
Logging Speed 2000 C F/H

EQUIPMENT DATA
Tool Number 1 MEA-C
Tool Number 2 MED-S
Tool Number 3 GPC-A
Tool Number 4 CC-B
Tool Number 5 CM-AB '93
Tool Number 6
Tool Number 7
Tool Number 8
Tool Number 9
Tool Number 10
Tool Number 11
Tool Number 12

REMARKS:
CORRELATED TO SWS DIL-BHC 19-AUG-93
MAXIMUM DEVIATION = 38 DEG AT TD
FMS RUN WITH-OUT KNUCKLE JOINT
15' STANDOFF RUN ON TCCB
ONE FMS BUTTON NON OPERATIONAL DURING LOG

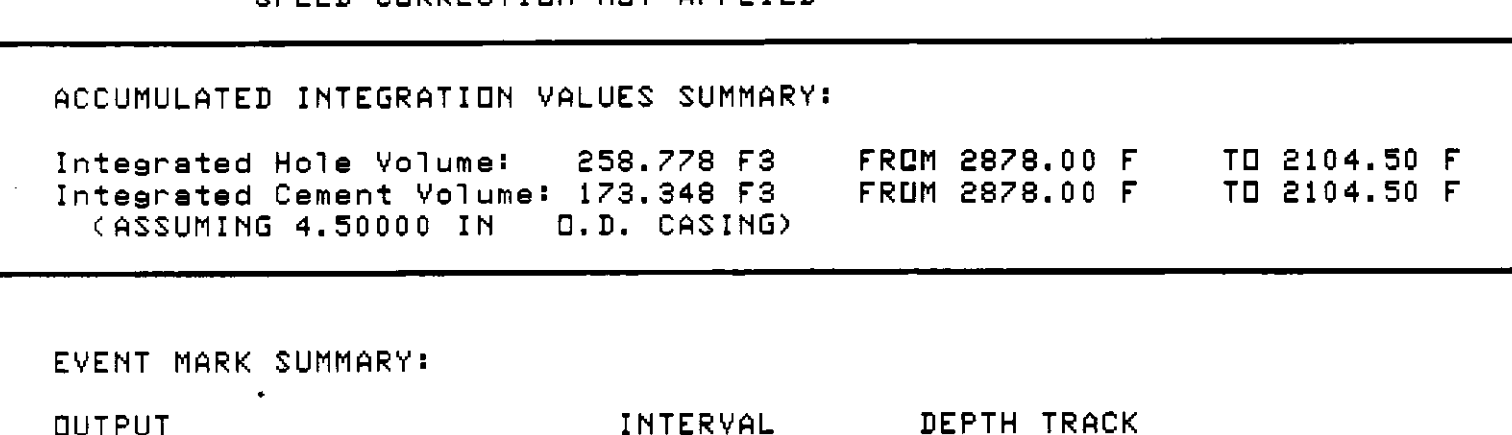
The well name, location and borehole reference data were furnished by the customer.

All interpretations are opinions based on inference from electrical or other measurements and we cannot, and do not guarantee the accuracy or correctness of any interpretations, and we shall not, be liable or responsible for any loss, costs, damages or expenses incurred or sustained by anyone resulting from any interpretations made by any of our officers, agents or employees. These interpretations are also subject to Clause 4 of our General Terms and Conditions as set out in our current Price Schedule.

Run No. TWO
Service Order No. 824486
Drilling Fluid Level 5.6 F
Salinity 560 C PPM
Rmt @ BHT 285 CHMM @ 97.0 DEG
Rmo @ BHT 285 CHMM @ 97.0 DEG
Logging Speed 2000 C F/H

EQUIPMENT DATA
Tool Number 1 MEA-C
Tool Number 2 MED-S
Tool Number 3 GPC-A
Tool Number 4 CC-B
Tool Number 5 CM-AB '93
Tool Number 6
Tool Number 7
Tool Number 8
Tool Number 9
Tool Number 10
Tool Number 11
Tool Number 12

REMARKS:
CORRELATED TO SWS DIL-BHC 19-AUG-93
MAXIMUM DEVIATION = 38 DEG AT TD
FMS RUN WITH-OUT KNUCKLE JOINT
15' STANDOFF RUN ON TCCB
ONE FMS BUTTON NON OPERATIONAL DURING LOG



MAIN LOG 5'

MIST CYBERDIP

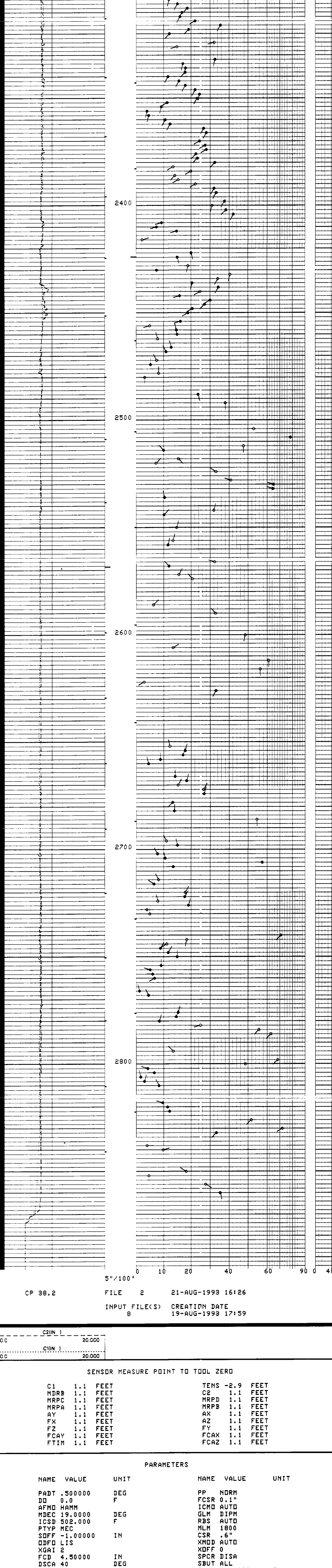
STRUCTURAL DIP NOT REMOVED
MIRROR IMAGES REMOVED

SPEED CORRECTION NOT APPLIED

ACCUMULATED INTEGRATION VALUES SUMMARY:
Integrated Hole Volume: 258.778 F3 FROM 2878.00 F TO 2104.50 F
Integrated Cement Volume: 173.348 F3 FROM 2878.00 F TO 2104.50 F
(ASSUMING 4.50000 IN D.D. CASING)

EVENT MARK SUMMARY:
OUTPUT INTERVAL BETWEEN PIPS DEPTH TRACK
Integrated Hole Volume 10.0000 F3 LEFT EDGE
Integrated Cement Volume 10.0000 F3 RIGHT EDGE

CP 38.2 FILE 2 21-AUG-1993 16:43
INPUT FILE(S) CREATION DATE 19-AUG-1993 17:59



CP 38.2 FILE 2 21-AUG-1993 16:26
INPUT FILE(S) CREATION DATE 19-AUG-1993 17:59

SENSDR MEASURE POINT TO TOOL ZERO

C1	1.1 FEET	TENS	-2.9 FEET
MDRB	1.1 FEET	C2	1.1 FEET
MRPC	1.1 FEET	MRPD	1.1 FEET
MRPA	1.1 FEET	MRPB	1.1 FEET
AY	1.1 FEET	AX	1.1 FEET
FX	1.1 FEET	FY	1.1 FEET
FZ	1.1 FEET	FCAX	1.1 FEET
FCAY	1.1 FEET	FCAZ	1.1 FEET
FTIM	1.1 FEET		

PARAMETERS

NAME	VALUE	UNIT	NAME	VALUE	UNIT
PADT	.500000	DEG	PP	NORM	
DD	0.0	F	PCSR	0.1"	
AFMD	HAMM		ICMD	AUTO	
MDEC	19.0000	DEG	GLM	DIPM	
ICSD	502.000	F	PBS	AUTO	
PTYP	MEC		NLM	1800	
SDFP	-1.00000	IN	CSR	.6"	
DDFD	LIS		XMOD	AUTO	
XGAI	2		XOFF	0	
FCD	4.50000	IN	SPCR	DISA	
DSCA	40	DEG	SBOT	ALL	
INT	4.00000	F	STEP	2.00000	F
SPAN	4		SANG	80.0000	
DPAD	AUTO		DMAX	90	DEG
ELRA	.500000	IN	SQFA	.900000	
HQUA	14		LQUA	6	
STDI	0.0	DEG	STDA	0.0	DEG
CSBL	2		BS	7.87500	IN
BHS	OPEN				

MAIN LOG 2'

MIST CYBERDIP

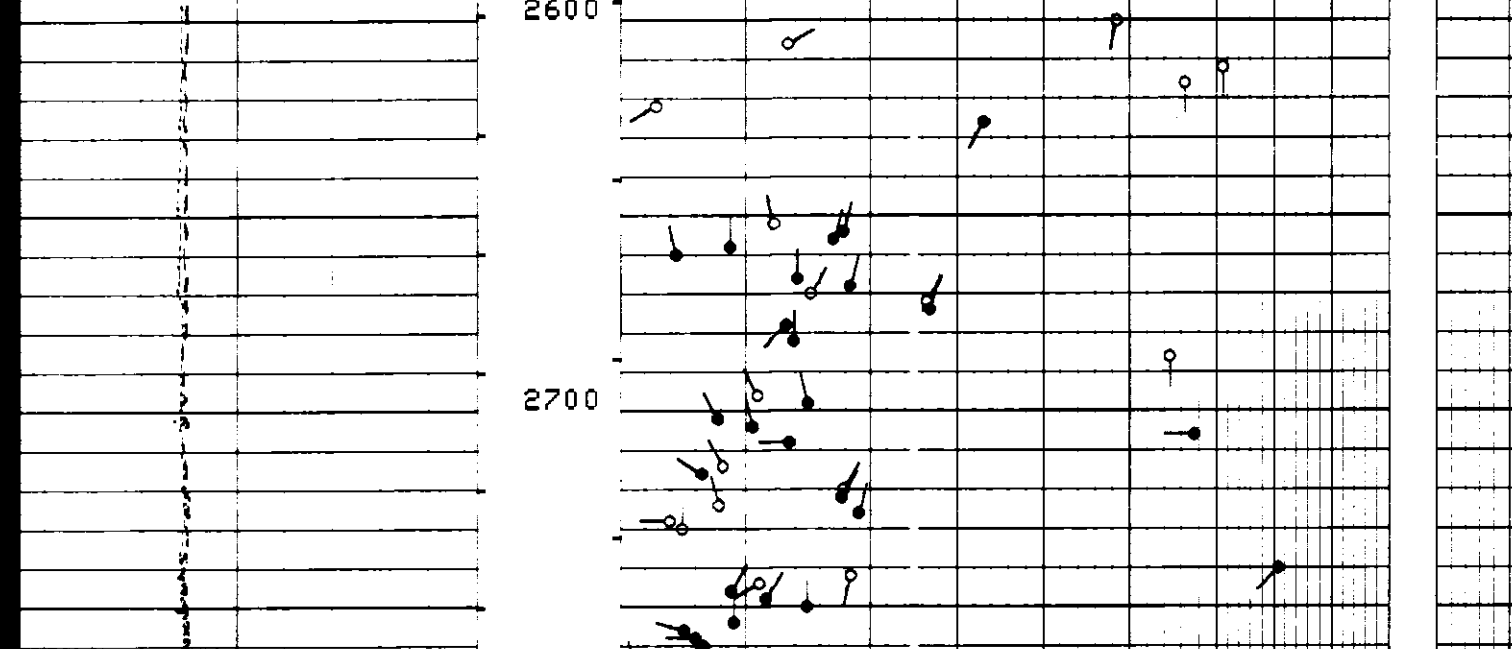
STRUCTURAL DIP NOT REMOVED
MIRROR IMAGES REMOVED

SPEED CORRECTION NOT APPLIED

ACCUMULATED INTEGRATION VALUES SUMMARY:
Integrated Hole Volume: 258.778 F3 FROM 2878.00 F TO 2104.50 F
Integrated Cement Volume: 173.348 F3 FROM 2878.00 F TO 2104.50 F
(ASSUMING 4.50000 IN D.D. CASING)

EVENT MARK SUMMARY:
OUTPUT INTERVAL BETWEEN PIPS DEPTH TRACK
Integrated Hole Volume 10.0000 F3 LEFT EDGE
Integrated Cement Volume 10.0000 F3 RIGHT EDGE

CP 38.2 FILE 2 21-AUG-1993 16:43
INPUT FILE(S) CREATION DATE 19-AUG-1993 17:59



CP 38.2 FILE 2 21-AUG-1993 16:26
INPUT FILE(S) CREATION DATE 19-AUG-1993 17:59

SENSDR MEASURE POINT TO TOOL ZERO

C1	1.1 FEET	TENS	-2.9 FEET
MDRB	1.1 FEET	C2	1.1 FEET
MRPC	1.1 FEET	MRPD	1.1 FEET
MRPA	1.1 FEET	MRPB	1.1 FEET
AY	1.1 FEET	AX	1.1 FEET
FX	1.1 FEET	FY	1.1 FEET
FZ	1.1 FEET	FCAX	1.1 FEET
FCAY	1.1 FEET	FCAZ	1.1 FEET
FTIM	1.1 FEET		

PARAMETERS

NAME	VALUE	UNIT	NAME	VALUE	UNIT
PADT	.500000	DEG	PP	NORM	
DD	0.0	F	PCSR	0.1"	
AFMD	HAMM		ICMD	AUTO	
MDEC	19.0000	DEG	GLM	DIPM	
ICSD	502.000	F	PBS	AUTO	
PTYP	MEC		NLM	1800	
SDFP	-1.00000	IN	CSR	.6"	
DDFD	LIS		XMOD	AUTO	
XGAI	2		XOFF	0	
FCD	4.50000	IN	SPCR	DISA	
DSCA	40	DEG	SBOT	ALL	
INT	4.00000	F	STEP	2.00000	F
SPAN	4		SANG	80.0000	
DPAD	AUTO		DMAX	90	DEG
ELRA	.500000	IN	SQFA	.900000	
HQUA	14		LQUA	6	
STDI	0.0	DEG	STDA	0.0	DEG
CSBL	2		BS	7.87500	IN
BHS	OPEN				

CP 38.2 FILE 2 21-AUG-1993 16:43
INPUT FILE(S) CREATION DATE 19-AUG-1993 17:59

SENSDR MEASURE POINT TO TOOL ZERO

C1	1.1 FEET	TENS	-2.9 FEET
MDRB	1.1 FEET	C2	1.1 FEET
MRPC	1.1 FEET	MRPD	1.1 FEET
MRPA	1.1 FEET	MRPB	1.1 FEET
AY	1.1 FEET	AX	1.1 FEET
FX	1.1 FEET	FY	1.1 FEET
FZ	1.1 FEET	FCAX	1.1 FEET
FCAY	1.1 FEET	FCAZ	1.1 FEET
FTIM	1.1 FEET		

PARAMETERS

NAME	VALUE	UNIT	NAME	VALUE	UNIT
PADT	.500000	DEG	PP	NORM	
DD	0.0	F	PCSR	0.1"	
AFMD	HAMM		ICMD	AUTO	
MDEC	19.0000	DEG	GLM	DIPM	
ICSD	502.000	F	PBS	AUTO	
PTYP	MEC		NLM	1800	
SDFP	-1.00000	IN	CSR	.6"	
DDFD	LIS		XMOD	AUTO	
XGAI	2		XOFF	0	
FCD	4.50000	IN	SPCR	DISA	
DSCA	40	DEG	SBOT	ALL	
INT	4.00000	F	STEP	2.00000	F
SPAN	4		SANG	80.0000	
DPAD	AUTO		DMAX	90	DEG
ELRA	.500000	IN	SQFA	.900000	
HQUA	14		LQUA	6	
STDI	0.0	DEG	STDA	0.0	DEG
CSBL	2		BS	7.87500	IN
BHS	OPEN				