

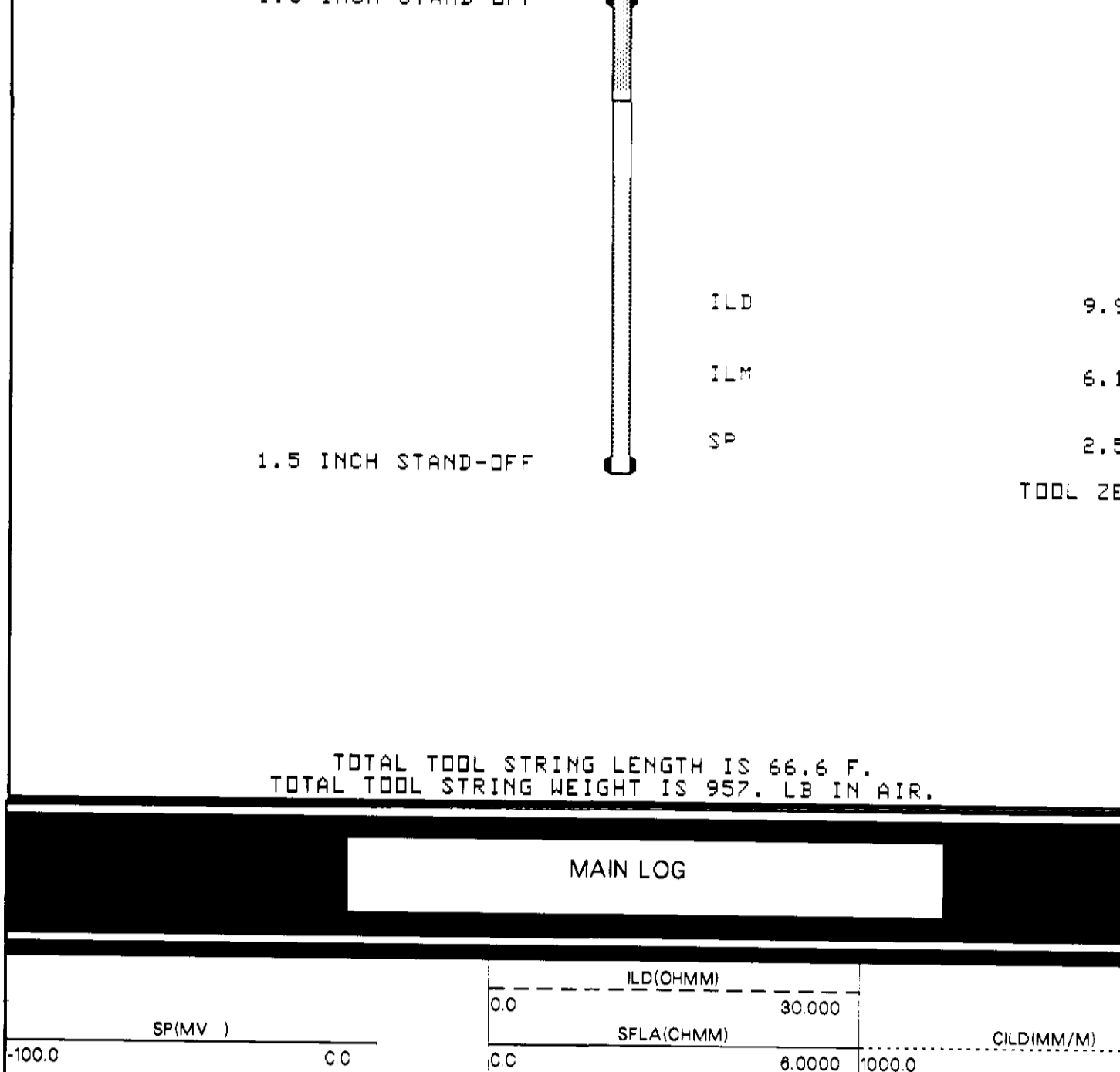
COMPANY NAHAMA AND WEAGANT ENERGY CO
WELL "SOCKEY" C.C. #31-15-65 RD. #1
FIELD MIST
COUNTY COLUMBIA STATE OREGON
LOCATION 821.6 E AND 718.2 W
WELL NO. 36 009 000294
DATE 08-NOV-1992
TIME 15:11
ELEVATION 1101
ELEVATION FROM DATUM 1101
ELEVATION FROM SEA LEVEL 1101
ELEVATION FROM DATUM 1101
ELEVATION FROM SEA LEVEL 1101

Run No. ONE
Service Order No. 624803
Drilling Fluid Level 50 F
Salinity 7000 PPM
Rmt @ BHT 333 CHMM @ 84 C DEGF
Rmc @ BHT 2888 CHMM @ 84 C DEGF
Logging Speed 3800 C F/HR

EQUIPMENT DATA
Tool Number 1 DIS-EC 298
Tool Number 2 DIC-DA 078
Tool Number 3 MCD-DA 1237
Tool Number 4 SLS-WA 1484
Tool Number 5 SLC-MA 96
Tool Number 6 SGC-C 4148
Tool Number 7 IEM-BD 304
Tool Number 8 SLM-DA 428
Tool Number 9 NLM-BC 478
Tool Number 10
Tool Number 11
Tool Number 12

REMARKS
10 DEGREES MAXIMUM DEVIATION

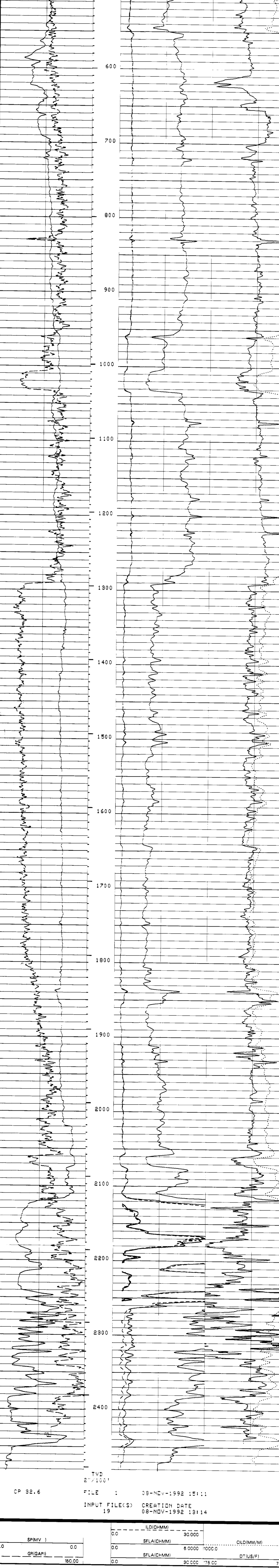
LOGGING TOOL STRING SKETCH



TOTAL TOOL STRING LENGTH IS 66.6 F.
TOTAL TOOL STRING HEIGHT IS 957. LB IN AIR.

MAIN LOG

CP 32.6 FILE 1 08-NOV-1992 15:17
INPUT FILE(S) 19 CREATION DATE 08-NOV-1992 13:14



CP 32.6 FILE 1 08-NOV-1992 15:11
INPUT FILE(S) 19 CREATION DATE 08-NOV-1992 13:14

SENSOR MEASURE POINT TO TOOL ZERO

SRAT 41.7 FEET	AMPL 44.1 FEET
CBFS 43.1 FEET	CBL 44.1 FEET
TT2 44.1 FEET	TT1 43.1 FEET
TT4 39.0 FEET	TT3 40.3 FEET
TT 44.1 FEET	TO 44.1 FEET
CSL 44.1 FEET	TTSL 44.1 FEET
MEAS. DEPTH 1173.0 FEET	GR 62.7 FEET
MEAS. DEPTH 1327.0 FEET	ILD 9.9 FEET
MEAS. DEPTH 1572.0 FEET	SFL 8.6 FEET
MEAS. DEPTH 1728.0 FEET	SPR 8.6 FEET
MEAS. DEPTH 1871.0 FEET	
MEAS. DEPTH 1965.0 FEET	
MEAS. DEPTH 2092.0 FEET	
MEAS. DEPTH 2121.0 FEET	
MEAS. DEPTH 2546.0 FEET	

PARAMETERS

PARAMETER	VALUE	UNIT
SMB - Sonic Memory Board		
TCCA - TO Connection Status	DISA	
RATE - Firing Rate	5	HZ
DG - Downhole Gain	5	
DETE - Detection	5	
AMPL - Sonic Amplitude	44.1	FEET
CBL - Cement Bond Log Amplitude	44.1	FEET
WFM - Waveform Mode	1	
SS - Sweep Speed	FAST	
TOD - TO Delay	DISA	
DTF - Delta-T Fluid	189.0000	US/F
DTM - Delta-T Matrix	56.0000	US/F
CDTS - Correction for Delta-T Shale Empirical	10.0000	
SPTS - Sonic Porosity Formula Select	R-H	
PP - Playback Processing	NORM	
DD - Depth Offset for Local Unit LI1	0.0	F
WHUD - Weight of Mud	9.69999	LB/G
MSEC - Medium Sonde Error Correction	5.90000	MM/M
SBR - Shoulder Res Resistivity	1.00000	DHMM
DESC - Deep Sonde Error Correction	5.60000	MM/M
FCD - Future Casing Diameter	0.0	IN
NCUT - NGT Calibration Jig Type	0.0	
FPHI - Formation Factor Formula Porosity	SPHI	
DWCO - Digitizer Word Count	512	
DSIN - Digitizer Sample Interval	5	US
DDEL - Digitizing Delay	200	US
SPVD - Start Point Vertical Depth	0.0	F
SINT - Sampling Interval for GCT Depth-Logging Tap	10.0000	M
BS - Bit Size	7.87500	IN
BHS - Borehole Status (Open or Cased)	OPEN	

INCLINOMETRY LIST

TIE DEPTH	MEAS. DEPTH	DEVI	TVD
	550.0 FEET	.42 DEG	550.0 FEET
	500.0 FEET	0.0 DEG	500.0 FEET
	629.0 FEET	1.95 DEG	629.0 FEET
	742.0 FEET	3.00 DEG	741.9 FEET
	772.0 FEET	4.00 DEG	771.6 FEET
	864.0 FEET	6.78 DEG	863.6 FEET
	927.0 FEET	8.78 DEG	926.9 FEET
	1079.0 FEET	8.00 DEG	1076.3 FEET
	1173.0 FEET	8.00 DEG	1169.4 FEET
	1327.0 FEET	7.79 DEG	1321.9 FEET
	1572.0 FEET	7.00 DEG	1568.9 FEET
	1728.0 FEET	6.78 DEG	1769.1 FEET
	1871.0 FEET	7.78 DEG	1954.0 FEET
	1965.0 FEET	8.50 DEG	1954.2 FEET
	2092.0 FEET	10.00 DEG	2079.7 FEET
	2121.0 FEET	10.00 DEG	2108.2 FEET
	2546.0 FEET	16.50 DEG	2521.7 FEET

CP 32.6 FILE 2 08-NOV-1992 15:08

COMPANY NAHAMA AND WEAGANT ENERGY CO. SCHL. FR 2640.0 F
WELL "SOCKEY" C.C. #31-15-65 RD. #1 SCHL. TD 2500.0 F
FIELD MIST DRLR. TD 2548.0 F
COUNTY COLUMBIA STATE OREGON Elev. KB 734.2 F
GL 728.2 F