

WELL COLUMBIA COUNTY #32-3
 COMPANY REICHOLD ENERGY CORP.
 AREA BEST REFRACK BASIN

AC 32-03-65 - WEGE -
WESTERN GEO-ENGINEERS
 "A SERVICE TO THE OIL AND GAS INDUSTRY"

RECEIVED-PTLD
 JUL 1 1980
 DEPT OF GEOLOGY
 & MINERAL INDUS.

LOCATION 2466' NE 74.6'E OF S 2 CORNER
 SEC 3; T. 40. N.; R. 5. W.
 COUNTY, STATE COLUMBIA CO., ORE

MUD DATA
 W WEIGHT
 V VISCOSITY
 F FILTRATE
 FC FILTER CAKE
 SD SAND IN %

LEGEND
 S SALINITY
 R RESISTIVITY
 RF FILTRATE RESISTIVITY
 BIT DATA
 NB NEW BIT
 RB RETURN BIT

OTHER DATA
 CG TRIP GAS
 CC CONNECTION GAS
 C CARBIDE GAS

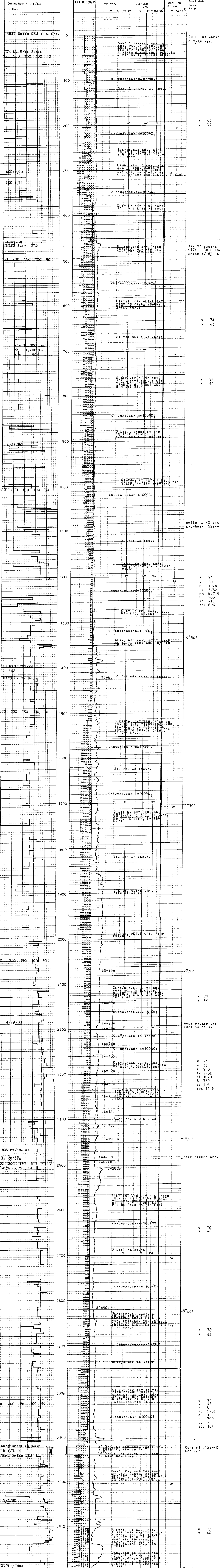
CR CORE BIT
 WLCB WIRE LINE CB
 CR CIRCULATE RETURNS
 NR NO RETURN
 DST DRILL STEM TEST
 DST INTERVAL
 CORE INTERVAL

REMARKS
 WELL ELEV. GL. 1257.27'
 KB. 1207.07'
 SALINITY IN PPM CL
 FILTRATE IN CC/30MIN.
 GAS TRAP FLUORINATION TYPE
 MUD LIGNOSULFONATE (CARCEL)

PAUL WARREN 416-1

CASING
 7" TO 447Ft.
 TO
 TO

DATE 4/29/80 TO 5/1/80 DEPTH 0' TO 3321' ENGINEERS TR. IN. L. U. LEN.



REICHOLD ENERGY CORP., COLUMBIA COUNTY #32-3, Sec 3; T. 40. N.; R. 5. W.; COLUMBIA CO., OREGON.