

COMPANY: ENERGY RESOURCES NORTHWEST  
 WELL: CC #32-27-63 R01 (CHIPSTER)  
 FIELD: 1151  
 COUNTY: COLLIERIA STATE: OR  
 LOCATION: 2389 88th WEST AND FRONTIER ST. NORTHWEST  
 CITY: COLLETON  
 STATE: OR  
 WELL: CC #32-27-63 R01 (CHIPSTER)  
 FIELD: MIST  
 COUNTY: COLLIERIA STATE: OR  
 LOCATION: 2389 88th WEST AND FRONTIER ST. NORTHWEST  
 CITY: COLLETON  
 STATE: OR

Parameter Name: G.L. 10.0 Elev: 2799.0 Elev: K.B. 2910.0  
 Logging Interval: K.B. 10.0 H. above Perm datum  
 Unit: @ 1mm Logged  
 Date: 06/15/98 @ 2:00  
 Type: Fluid Flow  
 Unit: @ 1mm Logged  
 Date: 06/15/98 @ 2:00  
 Type: Fluid Flow

Run No: 01  
 Serial No: 0161508  
 Model No: 200  
 Diameter: 182.00  
 Detector Model No: 182.00  
 Length: 182.00  
 Distance to Source: 182.00

Run No: 01  
 Serial No: 0161508  
 Model No: 200  
 Diameter: 182.00  
 Detector Model No: 182.00  
 Length: 182.00  
 Distance to Source: 182.00

Run No: 01  
 Serial No: 0161508  
 Model No: 200  
 Diameter: 182.00  
 Detector Model No: 182.00  
 Length: 182.00  
 Distance to Source: 182.00

Service Ticket No: 345678 API Serial No: 36-009-00322 PGM Version: XL v3.43  
 The Well Name, Location, Company, Data & Borehole Description Furnished By Client

**CEMENTING DATA**

Cement Pumped	Volume @ Volume	Centralizers	Joint From	To
Preceding Fluid	Volume		Joint From	To
Retruns Full/Partial/None?			Joint From	To
Pipe Rotated / Reciprocated			Joint From	To
Plug Pumped (Yes/No)?			Joint From	To
Plug Landed Pressure			Joint From	To
Pressure Held			Joint From	To

**EQUIPMENT DATA**

Run No	Serial No	Model No	Diameter	Detector Model No	Length	Distance to Source
01	0161508	200	182.00	182.00	182.00	182.00

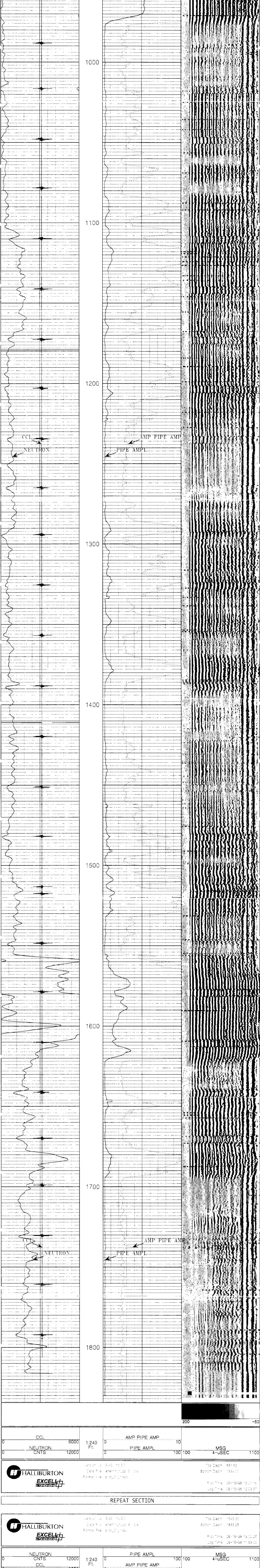
**LOGGING DATA**

Run	Depth	Well Head	Speed	Scale	Scale	Scale	Scale
01	8'6"	900	40	L	R	L	R

Remarks: LOG TIED INTO HALLIBURTON DUAL INDUCTION DATED 05/26/98. NEUTRON PASS SHIFT FOR MAIN LOG PASS.

HALLIBURTON DOES NOT GUARANTEE THE ACCURACY OF ANY INTERPRETATION OF THE LOG DATA. CONVERSION OF LOG DATA TO PHYSICAL ROCK PARAMETERS OR RECOMMENDATIONS WHICH MAY BE GIVEN BY HALLIBURTON PERSONNEL OR WHICH APPEAR ON THE LOG OR IN ANY OTHER FORM, ANY USER OF SUCH DATA, INTERPRETATIONS, CONVERSIONS, OR RECOMMENDATIONS AGREES THAT HALLIBURTON IS NOT RESPONSIBLE EXCEPT WHERE DUE TO GROSS NEGLIGENCE OR WILLFUL MISCONDUCT, FOR ANY LOSS, DAMAGE, OR EXPENSE RESULTING FROM THE USE THEREOF.

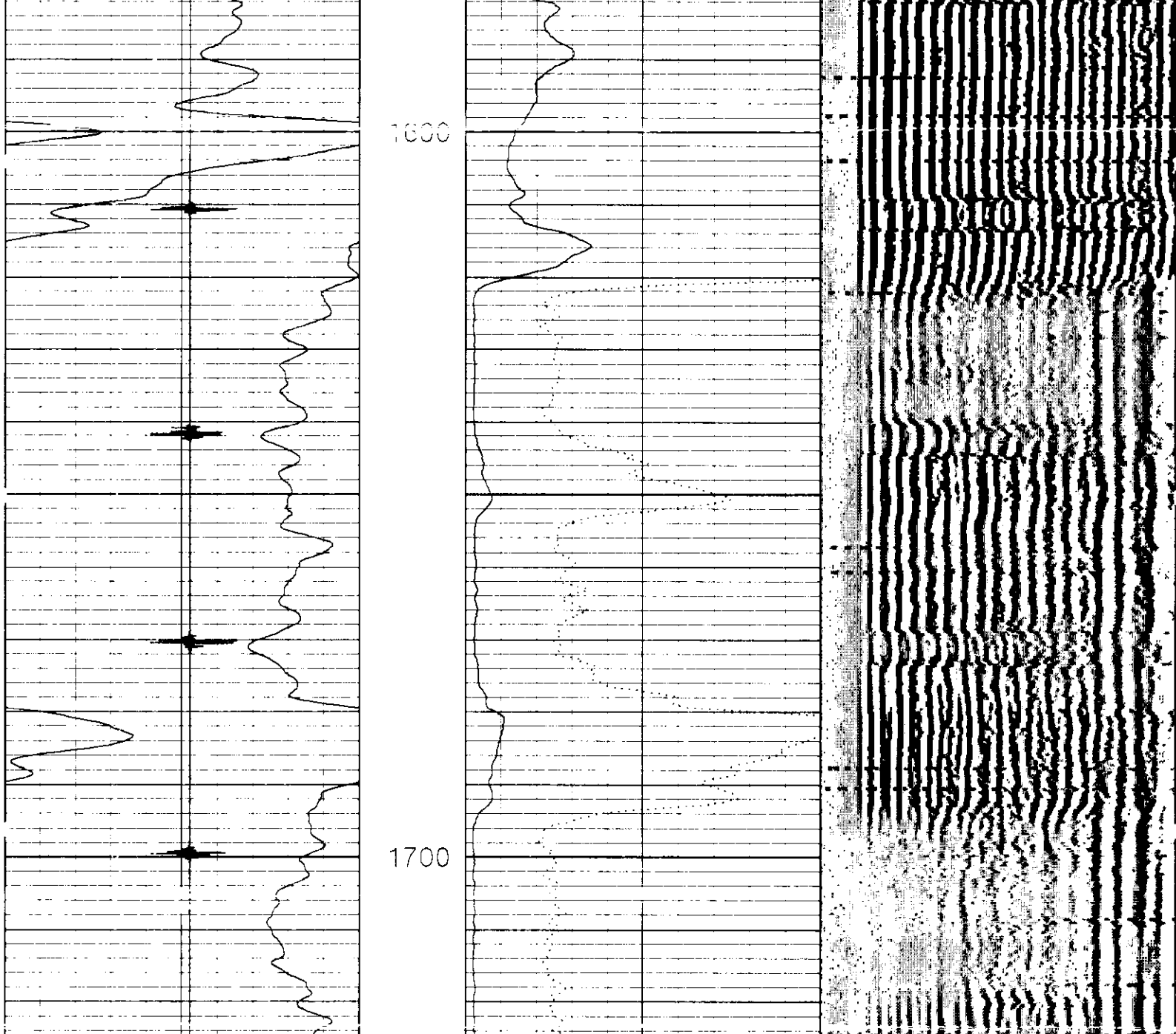
Top Decim: 883.33 Bottom Decim: 1844.11  
 Plot Time: 06-15-98 12:05:05 Log Time: 06-15-98 12:05:05



Top Decim: 883.33 Bottom Decim: 1844.11  
 Plot Time: 06-15-98 12:05:05 Log Time: 06-15-98 12:05:05

**REPEAT SECTION**

Top Decim: 883.33 Bottom Decim: 1844.11  
 Plot Time: 06-15-98 12:05:05 Log Time: 06-15-98 12:05:05



Top Decim: 883.33 Bottom Decim: 1844.11  
 Plot Time: 06-15-98 12:05:05 Log Time: 06-15-98 12:05:05

**Current EXCELL-2000 Parameter Values**

Depth: 1828.250  
 Date: 15-Jun-1998 12:59

Mnemonic	Tool	Parameter Description	Value	Units
PERF	M304HD	PERFORATED INTERVAL	NO	FT
TO	M304HD	TOTAL DEPTH	0	
CCLSEL	MCCL	CCL PROCESSING SELECTION	NO	
CCLOFF	MCCL	CCL PERFORATION OFFSET	0	
GR_OK	M307P	CASED HOLE?	YES	
CASED	M307P	CASED HOLE?	YES	
MUDWT	SHARED	BOREHOLE FLUID WEIGHT	8.3	Pounds/Gal.
BONDDK	M307B	DO BOND CALCULATIONS?	YES	
INVVVF	M307B	INVERT WAVEFORMS?	YES	
S_GATE	M307B	SHOW PIPE GATE ON MSG?	YES	
BI_OK	M307B	DO BOND INDEX CALCULATIONS?	YES	
BI_T	M307B	BONDINDEX CALCULATION METHOD	CHRT	
CASEOD	M307B	CASING DIAMETER (OD)	2.875	Inches
CASEWT	M307B	CASING WEIGHT	6.5	Lbs./Ft.
CTR	M307B	COMPRESSIVE STRENGTH	1000.	PSI
ISFOAM	M307B	IS THE CEMENT TYPE FOAM?	NO	
ISMUD	M307B	IS FLUID IN HOLE DRILLING MUD?	NO	
TTLWT	M307B	TRAVEL TIME THRESHOLD MW.?	5.	
TDWT	M307B	PIPE GATE WIDTH (USEC)	50	USEC
TDU_OK	TDUB	USE TDU DISPLAY CONTROLS?	YES	