

HORIZON WELL LOGGING

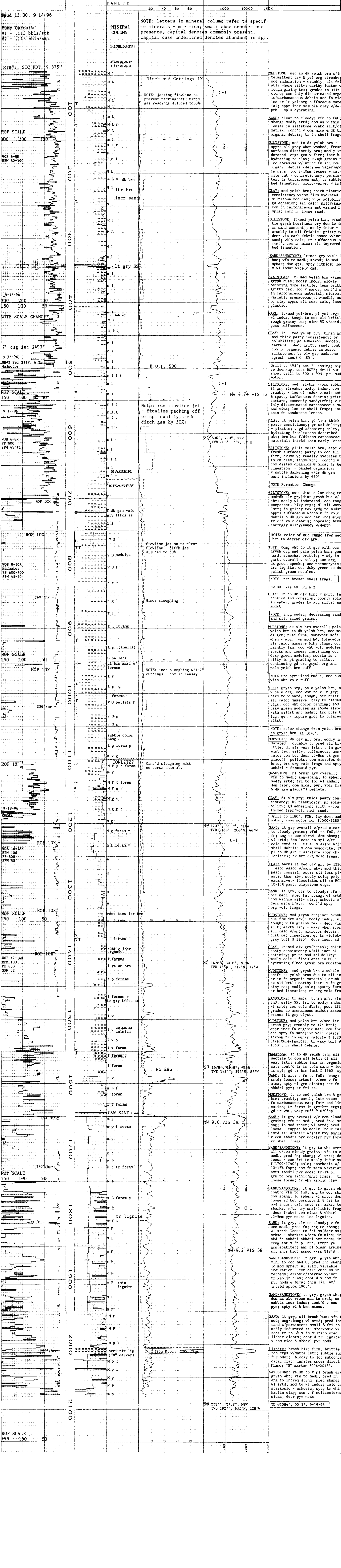
COMPANY: ENERFIN RESOURCES NORTHWEST
 WELL: Columbia County #32-27-65
 LOCATION: 2309.89' W and 1881.71' S from the NE corner of Section 27, T6N, R5W, B&M
 ELEVATION: G.L. 739' K.B. 743'
 FIELD: MIST
 COUNTY: Columbia, Oregon
 API NUMBER: 36-009-00322
 SPUD DATE: September 14, 1996
 LOGGING DATES: 9-14-96 to 9-19-96
 LOGGING DEPTHS: 43' to 2084' MD
 GEOLOGIST: Dave Huggins
 COMPANY MAN: Rob Lucas, Production Specialties
 CONTRACTOR: Taylor Drilling Inc.
 RIS: 7
 LOGGING GEOLOGISTS: Jim Eastes, John Staub
 BIT SIZE: 9.875" to 4 3/8" K.B.

CO Circulate Out
 LAT Logged After Trip
 LAS Logged After Survey
 CG Connection Gas
 KC Kelly Cut gas
 WG Wiper Gas
 TG Trip Gas
 SG Survey Gas
 NR Wiper Run
 CORE INTERVAL
 MOB (100,000# full scale)
 TRIP

PEBBLES >2mm
 SAND
 SANDSTONE
 SILTSTONE
 SHALE
 MUDSTONE
 MARL
 CLAY
 CHERT
 DOLOSTONE
 LIMESTONE
 VOLCANIC
 TUFF
 BASALT

CASING: 7" 20# ft set @ 93'
 DRILLING FLUID - Enterprise, Mike Redman engineer
 CALIBRATION 25 METHANE - 100 UNITS

DRILL RATE	LITHOLOGY	MINERAL	GASES	CHROMATOGRAPH	REMARKS
------------	-----------	---------	-------	---------------	---------



DESCRIPTIONS	SURVEYS	MUD CHECKS	MISCELLANEOUS
--------------	---------	------------	---------------

NOTE: letters in mineral column refer to specific minerals - m = mica; small case denotes occurrence, capital denotes commonly present, capital case underlined denotes abundant in spl.