

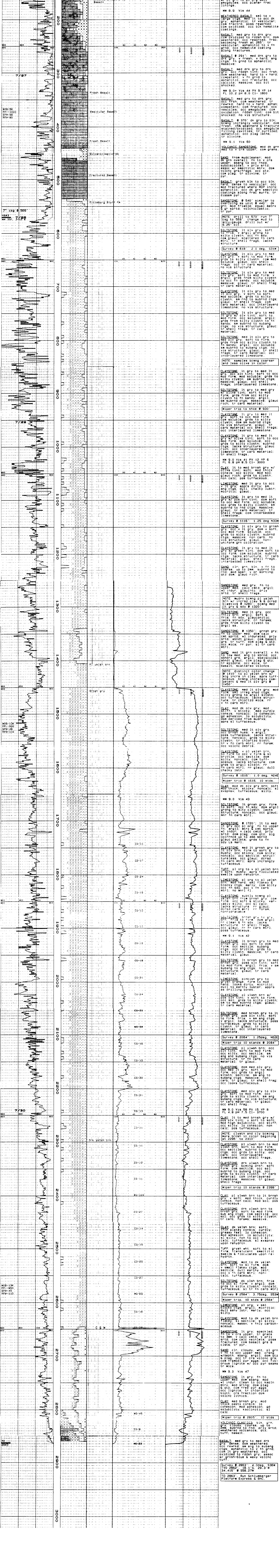
HORIZON WELL LOGGING

COMPANY ENERFIN RESOURCES NORTHWEST
WELL C.C. 32-28-75 (Hadassaur)
LOCATION 1818 7' S & 2231' W 1/4 NE corner
Sec. 28, T7N, R5W, S4E
ELEVATION 14652.8 1902
FIELD 1929-7-1 KTS 357 7-2
COUNTY Columbia, Oregon
SPUD DATE July 26, 1999
LOGGING DATES July 26 to July 30, 1999
OPERATOR Enerfin Resources Northwest
GEOLOGIST Dave Huggins
DRILL REP Rob Lucas-Production Specialist
CONTRACTOR Tycal Drilling Inc.
RIG #7
MUD COMPANY J.M. Martin/Baker Chemical
MUD TYPE oil/Alu-Gauge
LOGGING GEOLOGIST B. J. Blumour, Matt Carson
BIT SIZE 9 875 in to 2563'
6.25 in to 2863'
0.00 in to 2870'

711 ST Andrews Way
Lomboc, California 93438
(805) 793-0572

Table with 2 columns: ABBREVIATIONS and SYMBOLS. ABBREVIATIONS includes CO, LAT, CG, MG, TG, SG, NR, NB, WR, CORE INTERVAL, WOB, DP, SPM. SYMBOLS includes PEBBLES >2mm, SAND, SANDSTONE, SILTSTONE, MUDSTONE, SHALE, MARL, CLAY, LIGNITE, DOLOSTONE, LIMESTONE, VOLCANICS, 'UFF, BASALT.

Table with 6 columns: DRILL RATE, LITH, MINERAL, GASES, CHROMATOGRAPH, REMARKS. Includes scales for ROP, WOB, and gas analysis (METHANE, ETHANE, PROPANE, BUTANE, PENTANE).



NOTE: all gases (CO, SG, MG & Carbide) reported as above...
BASALT: med drk gry to drk gry...
SAND: med drk gry to drk gry...
SILTSTONE: med drk gry to drk gry...
CLAY: med drk gry to drk gry...
Survey # 2863: 4.0deg, S36W 34.416' @ 558.27W
TD 2863: Run Schlumberger Platform Express & B.C.