

COMPANY: RICHMOND ENERGY CORPORATION
 WELL: COLUMBIA COUNTY 833-8
 FIELD: WEST NEWMALDEN BASIN
 COUNTY: COLUMBIA
 STATE: U.S.A.
 LOCATION: 38841 N. R274.141, S1818.0 E
 SEC: 33
 TWP: 6N
 RANG: 30

PERMANENT SATING: DL
 ELEVATION: 239.4 F
 TIME PERM: 12 MAY 85
 LOG SERVICE: PERM. SATING
 SML.6. MEASURED FROM: KB
 ELUATIONS: DL
 TIME PERM: 12 MAY 85
 LOG SERVICE: PERM. SATING
 SML.6. MEASURED FROM: KB

DATE: 12 MAY 85
 RUN NO: 1
 NORTH-SHELLER: 3618.0 F
 NORTH-LOGGERS: 3649.0 F
 TDR, LOG INTERVAL: 3649.0 F
 CASING-SHELLER: 436 F
 CASING-LOGGERS: 5 5/8"
 CITY SIZE: 7 7/8"
 SITY SIZE: 3612 F

RECEIVED PLD
 JUL 11 1985
 DEPT. OF GEOLOGY

OTHER SERVICES:
 BWC
 HWT

PROGRAM
 TIME PERM: 12 MAY 85
 LOG SERVICE: PERM. SATING
 SML.6. MEASURED FROM: KB
 438448

TYPE FLUID IN HOLE: GEL/LIGHT
 DENSITY: 10.0 LB/G
 VISCOSITY: 65.0 S
 PH: 9.5
 FLUID LOSS: 4.5 CC
 SOURCE OF SAMPLE: WJSPIT
 RNF: 2.950 DWHM AT 62.0 DEGF
 RMC: 2.680 DWHM AT 50.0 DEGF
 RNC: 2.960 DWHM AT 50.0 DEGF
 SOURCE RNF/RMC: MEASURED/MEASURED
 RN AT BHT: 1.659 DWHM AT 99.0 DEGF
 RNF AT BHT: 1.400 DWHM AT 99.0 DEGF
 RNC AT BHT: 1.591 DWHM AT 99.0 DEGF

TIME CIRC. STOPPED: 10100 5-11
 TIME LOGGER ON BTH.: 03105 5-12
 MAX. REC. TEMP: 99.0 DEGF

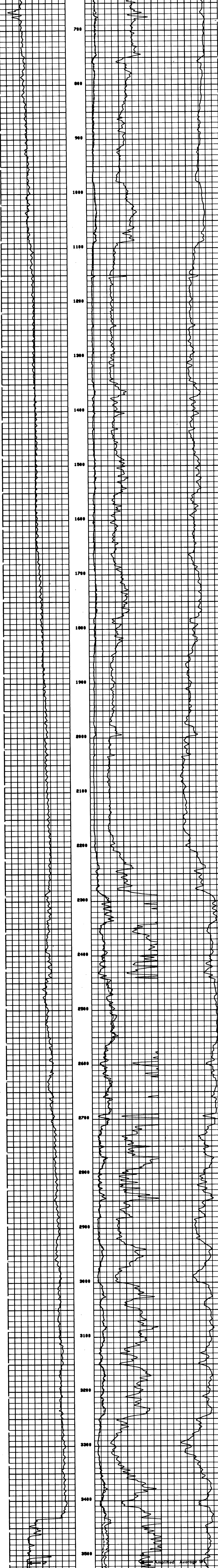
LOGGING UNIT NO: 0120
 LOGGING UNIT LOC: SACRAMENTO
 RECORDED BY: PILCH
 WITNESSED BY: THOMAS

REMARKS:
 700 PPM CHLORIDES INDUCTION AND SONIC RAN IN COMBINATION. CHE-2 AND STANBOFFS USED FOR CENTRALIZATION.

EQUIPMENT NUMBERS-
 BIS-EC 967 BIC-BA 552 HCD-BA 1237 SLS-RC 252
 SLC-FA 1921 ICH-BD 304 SLN-CA 130

ALL INTERPRETATIONS ARE OPINIONS BASED ON INFERENCE FROM ELECTRICAL OR OTHER MEASUREMENTS AND WE CANNOT, AND DO NOT GUARANTEE THE ACCURACY OR CORRECTNESS OF ANY INTERPRETATIONS, AND WE SHALL NOT, EXCEPT IN THE CASE OF GROSS OR WILLFUL NEGLIGENCE ON OUR PART, BE LIABLE OR RESPONSIBLE FOR ANY LOSS, COSTS, DAMAGES OR EXPENSES INCURRED OR SUSTAINED BY ANYONE RESULTING FROM ANY INTERPRETATION MADE BY ANY OF OUR OFFICERS, AGENTS OR EMPLOYEES. THESE INTERPRETATIONS ARE ALSO SUBJECT TO OUR GENERAL TERMS AND CONDITIONS AS SET OUT IN OUR CURRENT PRICE SCHEDULE.

FILE 3 12-MAY-85 04103
 DATA ACQUIRED 12-MAY-85 03152



FILE 3 12-MAY-85 03152
 DATA ACQUIRED 12-MAY-85 03103

SP (MV)	0.0	ILR (DWHM)	0.0	SFLA(DWHM)	30.000	CILR(DWHM)	0.0
-100.0	0.0	0.0	0.0	0.0	30.000	1000.0	0.0

SENSOR MEASURE POINT TO TOOL ZERO

CDL	49.9 FEET	ANPL	43.9 FEET
TT3	40.1 FEET	TT4	39.1 FEET
TT1	42.9 FEET	TT2	43.9 FEET
CAL1	31.8 FEET	SRAT	41.4 FEET
SFL	6.4 FEET	ILB	9.4 FEET
SP	2.5 FEET	ILM	5.7 FEET
TEMS	2.5 FEET	SPAR	2.5 FEET
MOIS	36.6 FEET		

PARAMETERS

NAME	VALUE	UNIT	NAME	VALUE	UNIT
MSIN	MF1		BMS	16	
DSIN	S	US	BML	200	US
CBTS	100.000		BUCD	512	
BTF	109.000	US/F	BTH	56.0000	US/F
SBR	1.00000	DWHM	BSEC	6.00000	HWD
PPMI	SPH1	IN	BSEC	7.00000	HWD
DS	7.07500		BMS	DPH1	
PP	HEMN		SD	0.0	F

TAPE NOT MADE