



WELL LOGGING, INC.

COMPANY ARCO OIL and GAS COMPANY

WELL Columbia County 34-4-65

LOCATION MIST

FIELD North 2°35'51" West 116°27'1"

COUNTY, STATE Columbia, Oregon

ELEVATION 870.52' Elev. 15,251' +3.3

API WELL INDEX NO.

DATES FROM 10-10-87 TO 10-10-87

DEPTHS FROM 40' x.2. TO 3322'

SPUD DATE 10-10-87

DRIILLING CONTRACTOR Taylor Drilling Co., Inc.

MUD COMPANY M-I Drilling Fluids Co.

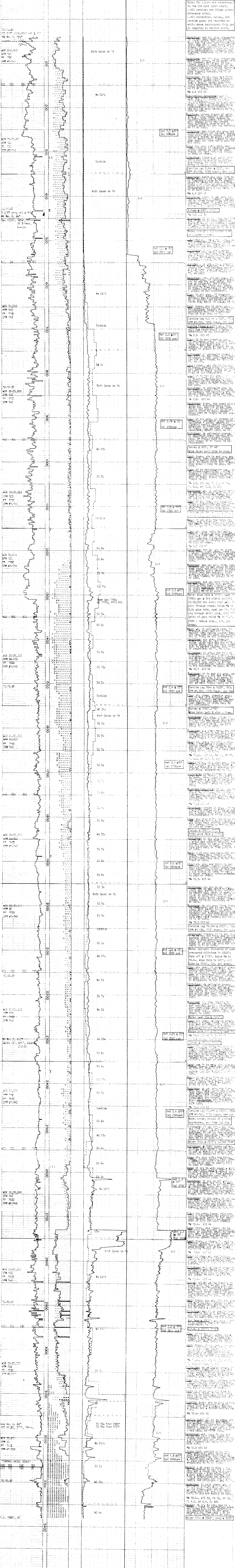
LOGGING GEOLOGISTS

ABBREVIATIONS table with columns for mud weight, funnel viscosity, plastic viscosity, yield point, fluid loss, rpm clockwise ion, mud resistivity, filtrate resistivity, logged after trip, no returns, poor returns, mud type.

CASING RECORD table with columns for depth, diameter, weight, material.

Legend for rock types: SAND, SHALE, SILTSTONE, CLAY, DIATOMITE, CONGLOMERATE, LIMESTONE, DOLOMITE, GLASSY, ARGILLACEOUS, PORCELANEOUS, INTRUSIVE, GYPSUM, SALTS.

PENETRATION ANALYSIS OF RETURNS REMARKS



Notes and additional remarks at the bottom of the log, including survey data and specific observations.