

C-34-28-65

| | | | |
|---|--|--|--|
| | | DUAL INDUCTION GUARD LOG | |
| FINAL PRINT COMPANY: REC'D OIL AND GAS COMPANY | | | |
| 2" = 100' WELL: DEEP CREEK PROSPECT CC NO.: 34-28-65 | | FIELD: M191 STATE OR OTHER SERVICES: | |
| COUNTY: COLUMBIA TWP: 6N R6E: 5W | | RPT NO.: NR 1003 69 FT NORTH RAN 149 750' WEST FROM THE SOUTHWEST CORNER OF SEC. 28 | |
| PERMANENT DATUM G. L. 11.5 FT. ABOVE PERM. DATUM LOG MEASURED FROM K. B. 11.5 FT. ABOVE PERM. DATUM DRILLING MEASURED FROM K. B. 11.5 FT. ABOVE PERM. DATUM | | ELEV.: 732.1 ELEV.: K. B. 743.6 D. F. 732.1 | |
| DATE: 10/27/89 RUN NO.: 001 DESIG.: 000000 R.M. LOG INTER.: CASING CASING-DRILLER: 9.625x44.9 CASING-LOGGER: 448 | | | |
| TYPE FLUID IN HOLE: SAND/OIL/WTR DEN. 1.15 SG: 0.92 SOURCE OF SAMPLE: 2.00 @ 105 Rm @ Meas. Temp.: 1.83 @ 105 Rmc @ Meas. Temp.: 2.25 @ 105 | | | |

Fold Here

| | | | | | |
|--|----------------------------|---------------------------|---------------|---------------------|----------|
| Service Ticket No.: 28521 | | API Serial No.: NA | | PGM Version: 2.20 E | |
| Change in Mud Type or Additional Samples | | RESISTIVITY SCALE CHANGES | | | |
| Date/Sample No. | Type Log | Depth | Scale Up Hole | Scale Down Hole | |
| Depth-Driller | | | | | |
| Type Fluid | NONE | | | | |
| Dens. : Visc. | | | | | |
| pH. : Fluid Loss | | | | | |
| Source of Sample | RESISTIVITY EQUIPMENT DATA | | | | |
| Rm @ Meas. Temp. | e | e | Run No | Tool Type & No | Pad Type |
| Rmc @ Meas. Temp. | e | e | ONE | DSTU #111527 | M430 |
| Source: Rmf:Rmc | : | : | ONE | DILT #4109415 | M412 |
| Rm @ BHT | 2.00 @ 105 | e | ONE | SGRD #4108937 | M416 |
| Rmc @ BHT | 1.83 @ 105 | e | | | |
| Rmc @ BHT | 2.25 @ 105 | e | | | |

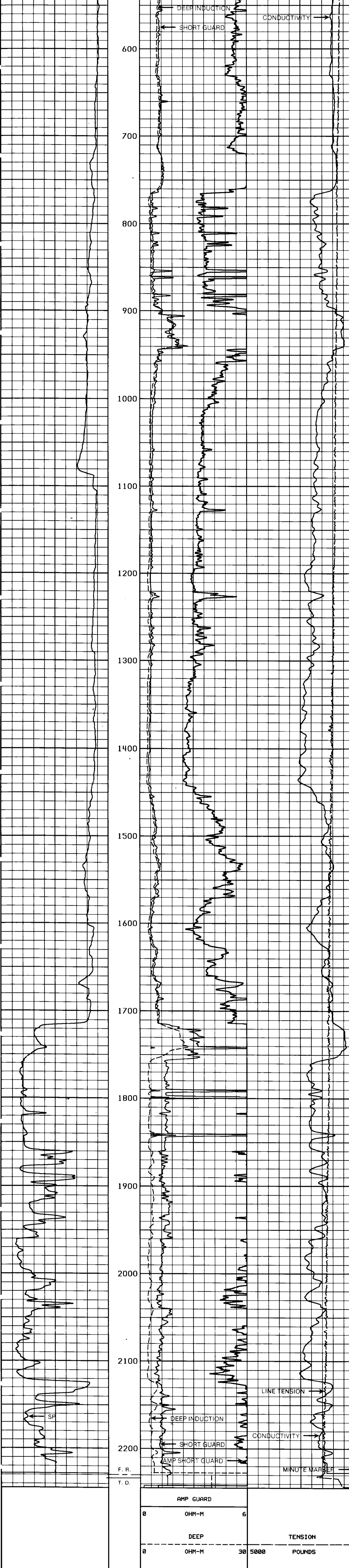
| | | | | | | | |
|--------------------|--------------|------------|-------------|------------|-------------|------------|-------------|
| GAMMA | | ACOUSTIC | | DENSITY | | NEUTRON | |
| Run No. | Serial No. | Run No. | Serial No. | Run No. | Serial No. | Run No. | Serial No. |
| Model No. | Model No. | Model No. | Model No. | Model No. | Model No. | Model No. | Model No. |
| Diameter | No. of Cent. | Diameter | Diameter | Diameter | Diameter | Diameter | Diameter |
| Detector Model No. | Spacing | Log Type | Source Type | Log Type | Source Type | Log Type | Source Type |
| Type | LSA | Serial No. | Serial No. | Serial No. | Serial No. | Serial No. | Serial No. |
| Length | FWDR | Strength | Strength | Strength | Strength | Strength | Strength |
| Distance To Source | | | | | | | |

| | | | | | | | | | |
|---------|-------|-------|-------|----------|-------|---------|-------|---------|-------|
| GENERAL | | GAMMA | | ACOUSTIC | | DENSITY | | NEUTRON | |
| Run No. | Depth | Scale | Scale | Scale | Scale | Scale | Scale | Scale | Scale |
| From | To | L | R | L | R | L | R | L | R |
| ONE | TD | CSG | 100 | | | | | | |

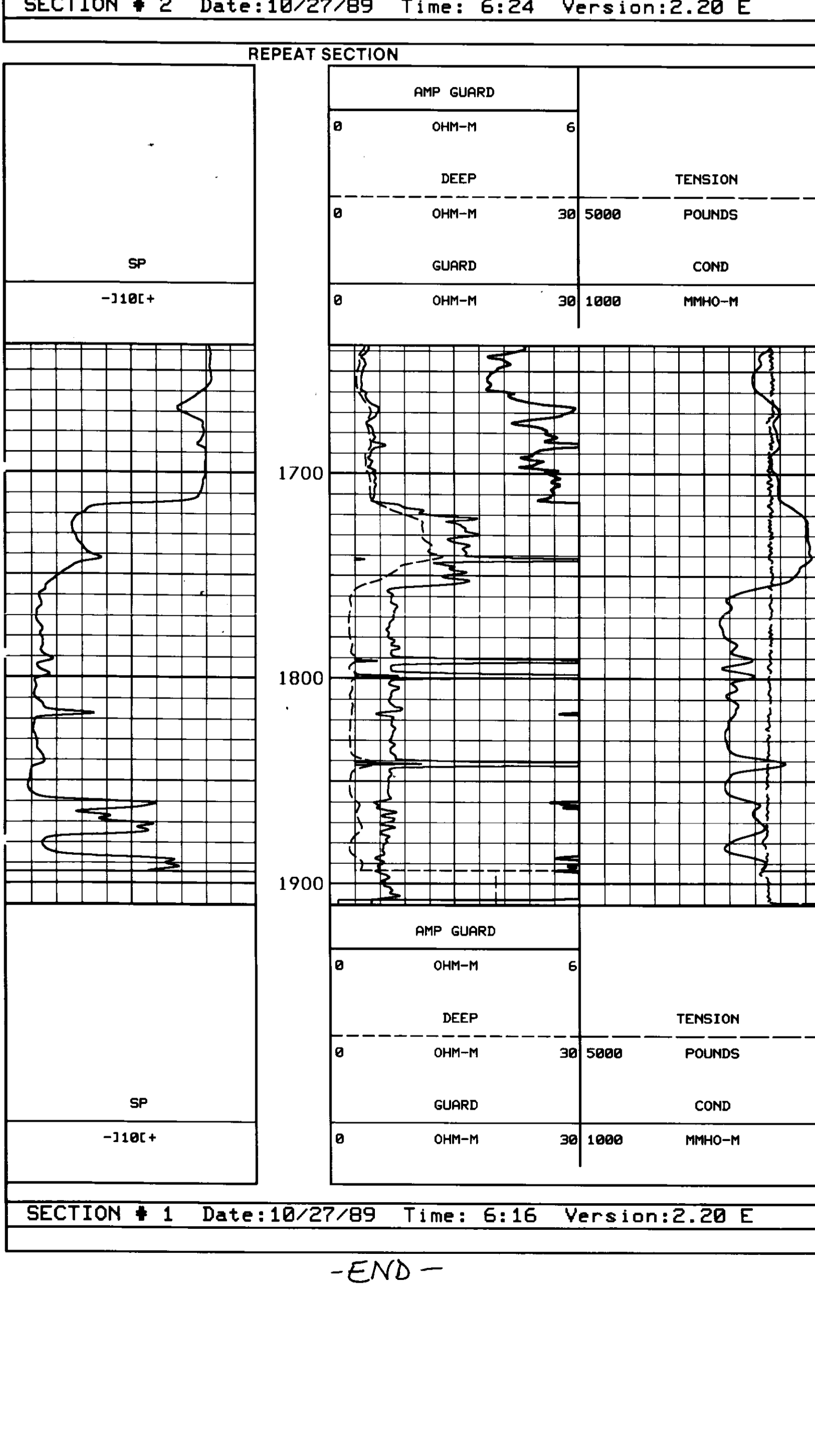
Remarks:

CREW: J. HARES, W. LARSON

Halliburton Logging Services, Inc. does not guarantee the accuracy of any interpretation of log data, conversion of log data to physical rock parameters or recommendations which may be given by MS personnel or which may appear on the log or in any other form. Any user of such data, interpretations, conversions or recommendations agrees that MS is not responsible except where due to gross negligence or willful misconduct. For any loss, damages, or expenses resulting from the use thereof.



SECTION # 2 Date: 10/27/89 Time: 6:24 Version: 2.20 E



SECTION # 1 Date: 10/27/89 Time: 6:16 Version: 2.20 E

-END-