

CC 34-28-66



COMPENSATED
DENSITY DUAL
SPACED NEUTRON

FINAL PRINT
COMPANY ARCO OIL AND GAS COMPANY

2" - 100'
WELL DEEP CREEK PROJECT
CO NO. 94-28-66
FIELD MIST
COUNTY COLUMBIA
STATE OR
LOCATION 1009.69 FT. NORTH
AND 2843.76 FT. WEST FROM
THE SOUTHWEST CORNER OF
AVL
DIAL
OTHER SERVICES

PERMANENT DATUM C.L. 28
LOG MEASURED FROM K. 8, 11.5 FT. ABOVE PERM. DATUM
DRILLING MEASURED FROM K. 8
DATE 10/27/89
ELEV. 743.6
C. L. 732.1

LOG NO. 102789
RUN NO. 01
SERIAL NO. 432
DATE 10/27/89
LOG MEASURED FROM K. 8, 11.5 FT. ABOVE PERM. DATUM
DRILLING MEASURED FROM K. 8
DATE 10/27/89
ELEV. 743.6
C. L. 732.1
LOG NO. 102789
RUN NO. 01
SERIAL NO. 432
DATE 10/27/89
LOG MEASURED FROM K. 8, 11.5 FT. ABOVE PERM. DATUM
DRILLING MEASURED FROM K. 8
DATE 10/27/89
ELEV. 743.6
C. L. 732.1

Fold Here

Service Ticket No.: 28521	API Serial No.: NA	PGM Version: 2.20 E
Change in Mud Type or Additional Samples		
Date/Sample No.	Type Log	Depth
Depth-Driller		Scale Up Hole
Type Fluid		Scale Down Hole
In Hole		NONE
Dens. : Visc.		
pH. : Fluid Loss		
Source of Sample		
Ra @ Meas. Temp.		
Rmf @ Meas. Temp.		
Rmc @ Meas. Temp.		
Source: Rmf/Rmc		
Rm @ BHT	2.00 #105	
Rmf @ BHT	1.83 #105	
Rmc @ BHT	2.25 #105	

EQUIPMENT DATA		RESISTIVITY EQUIPMENT DATA	
Run No.	ONE	Run No.	ONE
Serial No.	432	Tool Type & No.	DSTU #111527
Model No.	465	Pad Type	M430
Diameter	4.5		
Detector Model No.	NA		
Type	SCINT		
Length	4"		
Distance to Source	NA		

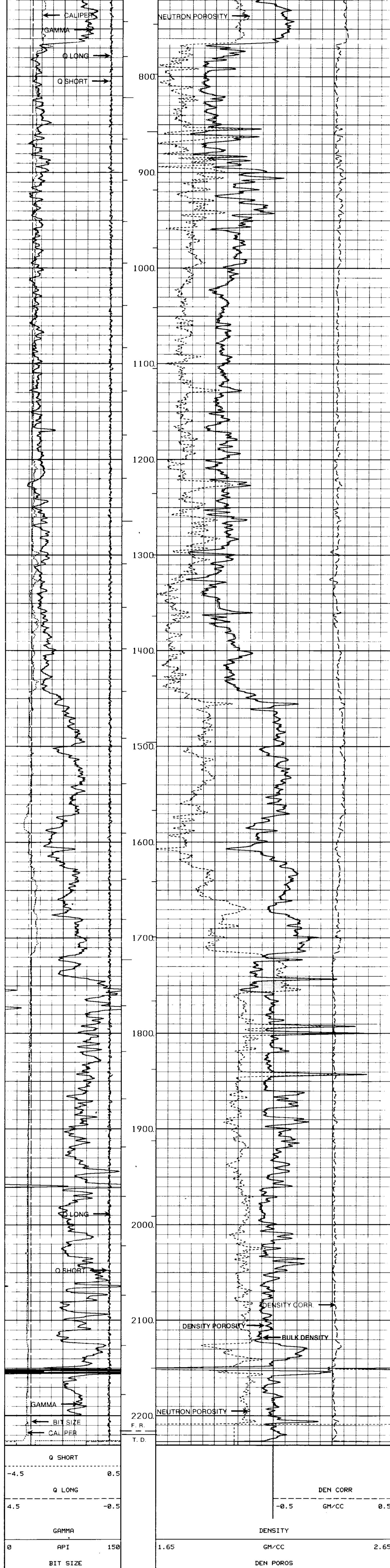
GAMMA		ACOUSTIC		DENSITY		NEUTRON	
Run No.	ONE	Run No.	ONE	Run No.	ONE	Run No.	ONE
Serial No.	4185759	Serial No.	465	Serial No.	465	Serial No.	432
Model No.	3.625	Model No.	465	Model No.	465	Model No.	432
Diameter	3.625	Diameter	4.5	Diameter	4.5	Diameter	3.625
Detector Model No.	NA	Log Type	G-C	Log Type	G-C	Log Type	N-N
Type	SCINT	Source Type	CS-137	Source Type	CS-137	Source Type	AMBE
Length	4"	Serial No.	022	Serial No.	022	Serial No.	94
Distance to Source	NA	Strength	1.5 CI	Strength	1.5 CI	Strength	18.5 CI

GENERAL		GAMMA		ACOUSTIC		DENSITY		NEUTRON	
Run No.	ONE	Run No.	ONE	Run No.	ONE	Run No.	ONE	Run No.	ONE
Depth	30	Scale	150	Scale	150	Scale	150	Scale	150
From To	CSG	L	R	L	R	L	R	L	R
		API	API			GMCC	GMCC	GMCC	GMCC
						60x	0x	2.65	

Remarks: AHV CALCULATED FOR 3.5 INCH CASING.

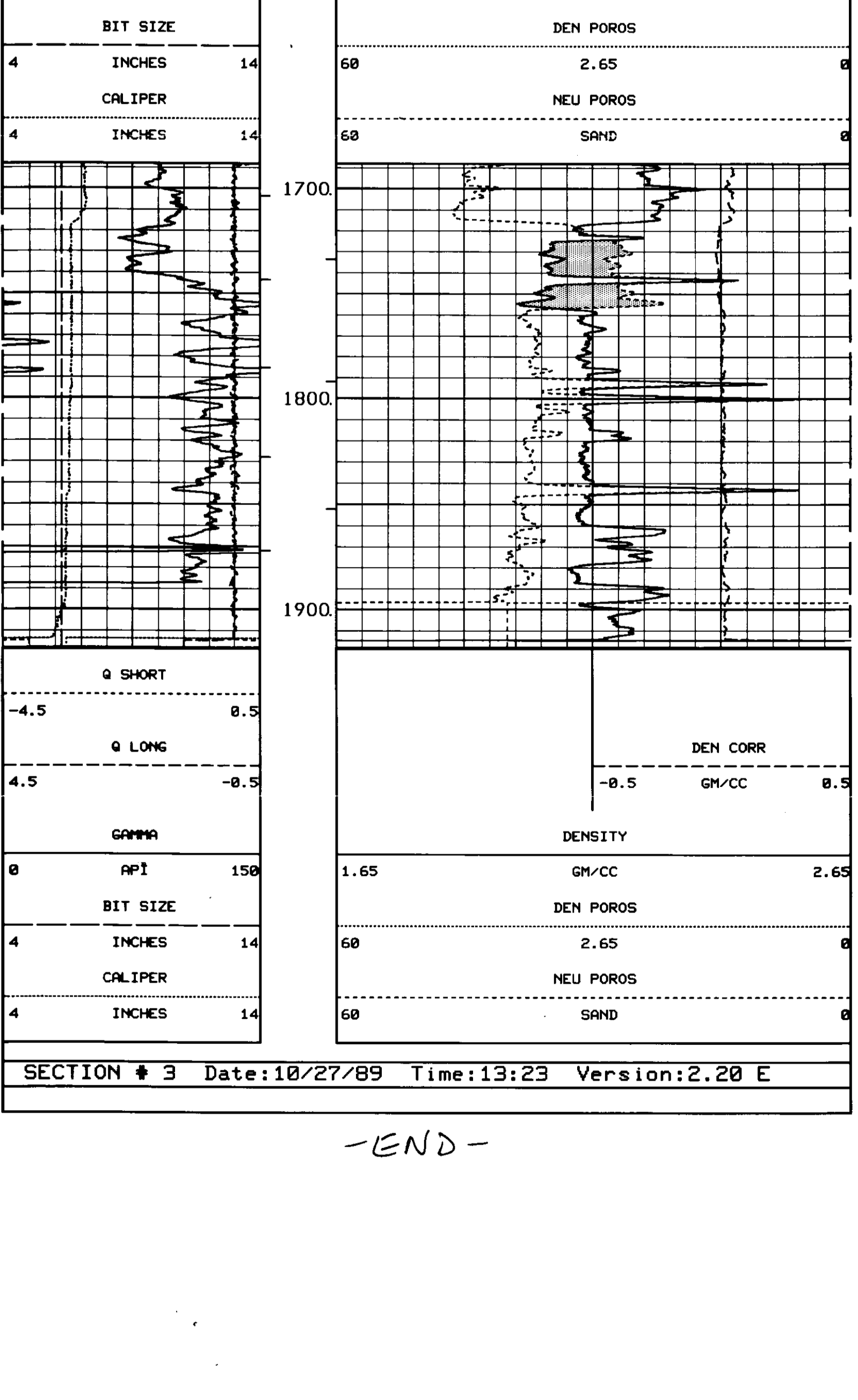
CREW: J. HARES, W. LARSON

Halliburton Logging Services, Inc. does not guarantee the accuracy of any interpretation of log data, comparison of log data to physical rock parameters or recommendations which may be given by HLS personnel or which may appear on the log or in any other form. Any user of such data, interpretation, comparison or recommendations agrees that HLS is not responsible except where due to gross negligence or willful misconduct, for any loss, damage, or expense resulting from the use thereof.



SECTION # 1 Date: 10/31/89 Time: 18:54 Version: 2.20 G

REPEAT SECTION



SECTION # 3 Date: 10/27/89 Time: 13:23 Version: 2.20 E

-END-