

EPOCH

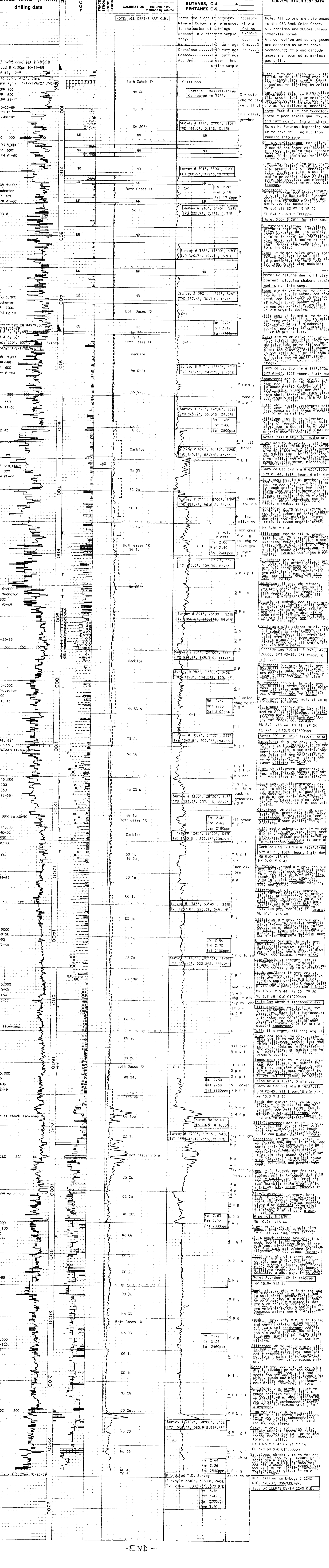
WELL LOGGING, INC.

COMPANY	ARCO OIL AND GAS COMPANY
WELL	DEEP CREEK #34-28-65
FIELD	MIST
LOCATION	1003.69'N and 2845.76'W from the SE corner of Section 28, T6N, R5W, W.M.N.
COUNTY, STATE	Columbia, Oregon
API WELL INDEX NO.	
ELEVATION	732.11' G.L., 743.61' K.B.
DATES	FROM 10-19-89 TO 10-25-89
DEPTHS	FROM 40' K.B. TO 2240' K.B.
SPUD DATE	10-19-89
DRILLING CONTRACTOR	Taylor Drilling Co., Rig # 5
MUD COMPANY	BAROID
LOGGING GEOLOGISTS	Dave Deatherage Harry Snowden Gary Sandstrom

ABBREVIATIONS		CASING RECORD	
NB BIT	MW MUD WEIGHT	13 3/8" cond. AT	40'
RRB RE-RUN BIT	VS FUNNEL VISCOSITY		
RTB RE-TIP BIT	PV PLASTIC VISCOSITY	9 5/8" AT	449'
CB CORE BIT	YP YIELD POINT		
T.G. TRIP GAS	FL FLUID LOSS (cc/30 min)		
S.G. SURVEY GAS	CL PPM CHLORIDE (cc)		
W.G. WIPER GAS	RM MUD RESISTIVITY		
C.G. CONNECTION GAS	RMF FILTRATE RESISTIVITY		
WOB WEIGHT ON BIT	LAT LOGGED AFTER TRIP		
RPM ROTARY REV/MIN	NR NO RETURNS	8 1/2" AT	453'
PP PUMP PRESSURE	PR POOR RETURNS	12 1/2" AT	456'
SPM STROKES/MIN	MUD TYPE L5ND Polymer	6 1/4" AT	2240'
			AT

<input checked="" type="checkbox"/> SAND/SANDSTONE	<input type="checkbox"/> CLAY	<input type="checkbox"/> LIMESTONE	<input type="checkbox"/> TUFF	<input type="checkbox"/> LIGNITE
<input type="checkbox"/> SHALE	<input type="checkbox"/> CONGLOMERATE	<input type="checkbox"/> DOLOMITE	<input type="checkbox"/> FOSSIL	<input type="checkbox"/> GLAUCONITE
<input type="checkbox"/> SILTSTONE	<input type="checkbox"/> CONGLOMERATE	<input type="checkbox"/> BASALT	<input type="checkbox"/> MICA	<input type="checkbox"/> PYRITE

OIL: BASED ON LIVE OIL IN UNWASHED CUTTINGS AND PERCENT STAINING AND FLUORESCENCE OF WASHED SAMPLES.



-END-