

02 34-31-05 + RD 1

HALLIBURTON
LOGGING SERVICES, INC.
2" - 100' 5" - 100'
FOUR-ARM DIPMETER LOG
COMPUTED

COMPANY: NATIONAL & WYOMING ENERGY COMPANY
WELL: HUBBERT 8-24-31-61 (L)
FIELD: MISTY
COUNTY: COCHISE
STATE: ARIZONA
APR No: 56-009-00224
Location: 2047 1st W 35th & 661 60th N
DIP/RES/3R
C/D/RES/3R

PERMANENT DATUM: 101' Elev. 786.77' Elevation from 101' Datum
DATE: 8-23-91
RUN No: 19027
Dipmeter-Logger: 1825
Borehole-Logger: 1823
Top Log Meter: 1150
Caliper-Logger: 5037
Bit Size: 7.875"
Type Fluid in Hole: GSD-1/2/2/2/2/2
Dens. Visc: 10.1 1.49
pH Fluid Loss: 1
Source of Sample: FLOWLINE
R₁ @ Meas. Temp: 1.8 @ 68 °F
R₂ @ Meas. Temp: 2.0 @ 66 °F
R₃ @ Meas. Temp: 1.6 @ 66 °F
R₄ @ Meas. Temp: 1.5 @ 64 °F
Time Since Circ: 3.0 HOURS
Time On Bottom: 04:17
Max. Rec. Temp: 84 °F
Equip. Location: 7/674 113RD
Recorded By: J. VANLON
Witnessed By: J. VANLON

Service Ticket No: 168247 API Serial No: PGM Version: COMPUTED FROM

Change in Mud Type or Additional Samples		RESISTIVITY/RWA SCALE CHANGES			COMPUTED FROM	
Date	Sample No	Type Log	Depth	Scale Up Hole	Scale Down Hole	a m

Dens / Visc: 10.1 / 1.49
pH Fluid Loss: 1

Source of Sample: FLOWLINE

RESISTIVITY EQUIP DATA						
R ₁ @ Meas. Temp	R ₂ @ Meas. Temp	R ₃ @ Meas. Temp	R ₄ @ Meas. Temp	Run No	Tool Type and No	Tool Position
1.8	2.0	1.6	1.5	ONE	PGD 8(-144)	CENTER

Borehole Corrections: medium deep

EQUIPMENT DATA			
GAMMA	ACOUSTIC	DENSITY	NEUTRON
Run No: Model No: Diameter: Detector Model No: Type: Length: Distance to Source:	Run No: Serial No: Model No: No. of Cant: Spacing: LSA: FWDA:	Run No: Serial No: Model No: Diameter: Log Type: Source Type:	Run No: Serial No: Model No: Diameter: Log Type: Source Type: Strength:

LOGGING DATA											
GENERAL			GAMMA		ACOUSTIC		DENSITY		NEUTRON		
Run No	From	To	Scale	R	Scale	R	Matrix	Scale	Matrix	Scale	Matrix
ONE	1825	1150									

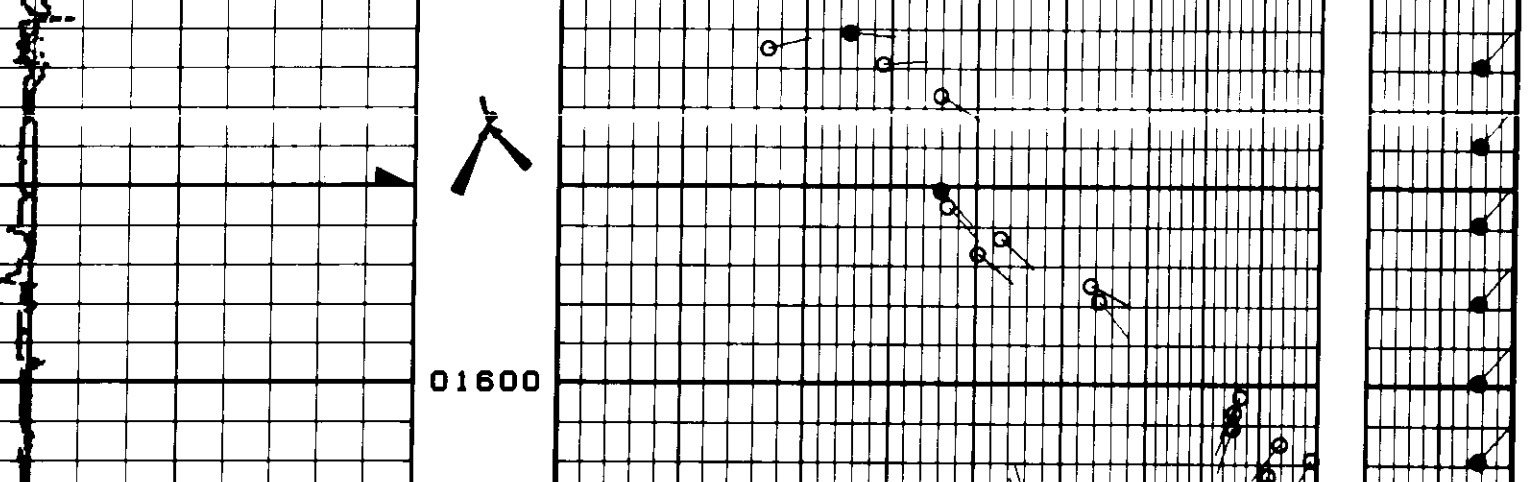
REMARKS: AT CLIENT'S REQUEST, DIPMETER WAS LOCKED FROM 1825' TO 1150'.
CASED HOLE PARAMETERS: From: To: Bit Size: Csg. O.D.: Csg. Wt.

Halliburton Logging Services, Inc. does not guarantee the accuracy of any interpretation of log data. Conversion of log data to physical rock parameters, or recommendations which may be given by Halliburton Logging Services, Inc. personnel or which may appear on the log or in any other form. Any use of such data, interpretations, conversions or recommendations agrees that Halliburton Logging Services, Inc. is not responsible, except where due to gross negligence or willful misconduct, for any loss, damages, or expense resulting from the use thereof.

08-23-91 1154.9 68247 0089-26 0 05:11

NEXUS 8' X 48" X 60"
MAGNETIC DECLINATION = 20°
TADPOLE DEPTH = 1154.9

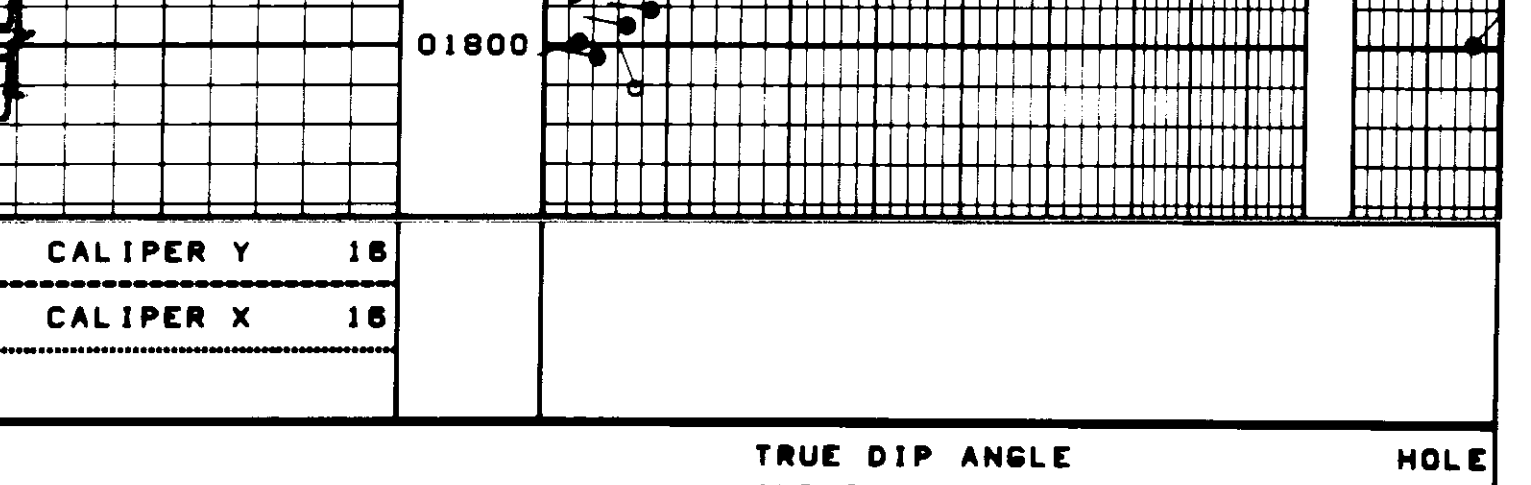
TRUE DIP ANGLE AND DIRECTION: 0° 10° 20° 30° 40° 50° 60° 90° 0° 30°
HOLE ORIENT



08-23-91 1818.9 68247 0089-26 0 05:11

NEXUS 8' X 48" X 60"
MAGNETIC DECLINATION = 20°
TADPOLE DEPTH = 1818.9

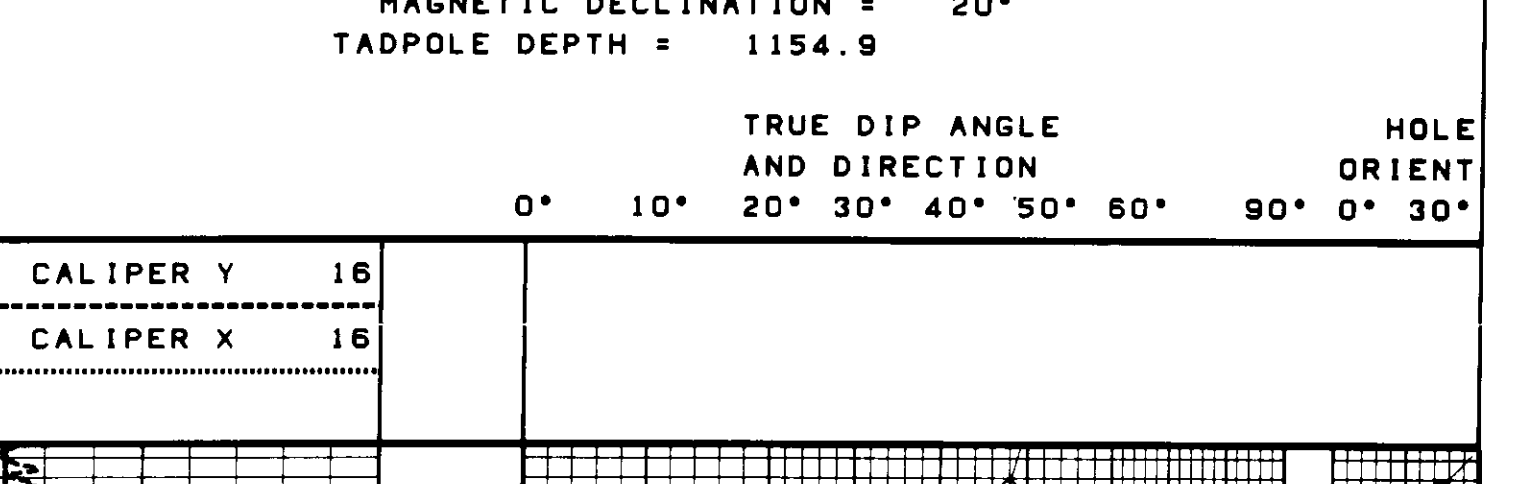
TRUE DIP ANGLE AND DIRECTION: 0° 10° 20° 30° 40° 50° 60° 90° 0° 30°
HOLE ORIENT



08-23-91 1818.9 68247 0089-26 0 05:11

NEXUS 8' X 48" X 60"
MAGNETIC DECLINATION = 20°
TADPOLE DEPTH = 1814.9

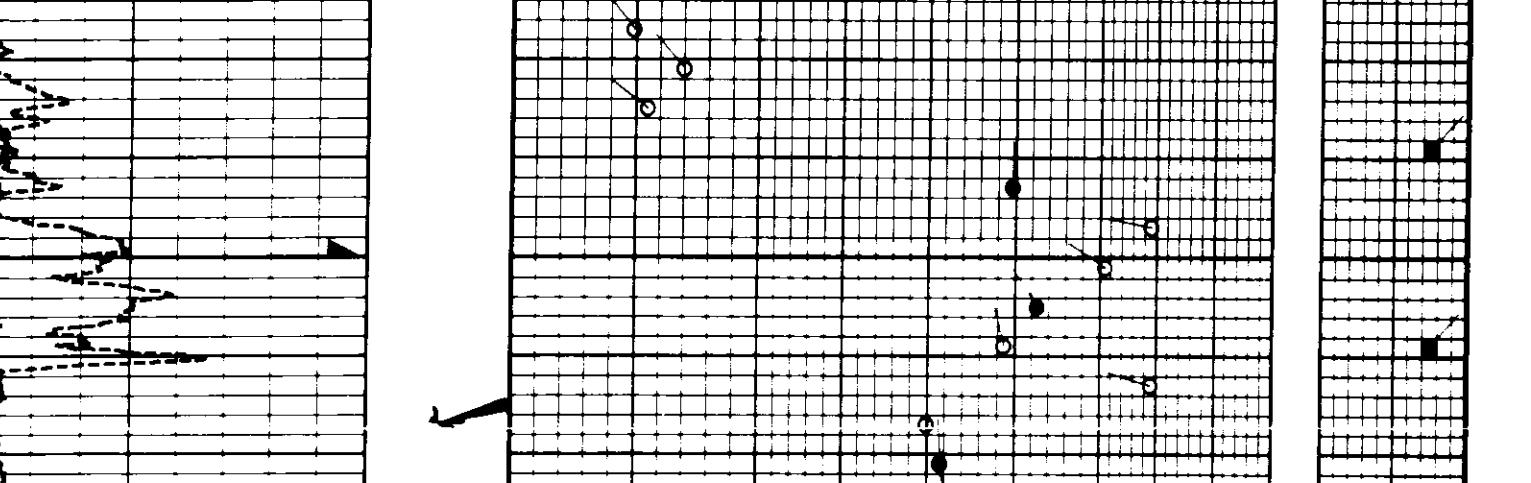
TRUE DIP ANGLE AND DIRECTION: 0° 10° 20° 30° 40° 50° 60° 90° 0° 30°
HOLE ORIENT



08-23-91 1818.9 68247 0089-26 0 05:11

NEXUS 8' X 48" X 60"
MAGNETIC DECLINATION = 20°
TADPOLE DEPTH = 1814.9

TRUE DIP ANGLE AND DIRECTION: 0° 10° 20° 30° 40° 50° 60° 90° 0° 30°
HOLE ORIENT



08-23-91 1818.9 68247 0089-26 0 05:11

-END-