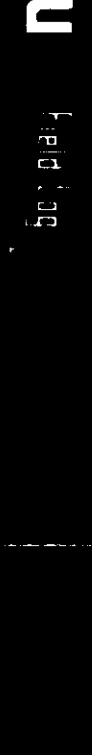


2-41-86-85

Schlumberger
2" DUAL INDUCTION-SFL



Logging

COMPANY: ARCO EXPLORATION AND TECHNOLOGY COMPANY
WELL: *COLUMBIA COUNTY* 841-6
FIELD: MIST GAS
COUNTY: COLUMBIA
STATE: OREGON
NATION: U.S.-A.
LOCATION: 58214545M 306.15' SEDASH
SEC: 6
REG: 5M
TUPI: 5M

PERMANENT DATUM: GL
ELEVATION: 819.3 F
ELEVATIONS: KBI 822.3 F
LDB MEASURED FROM PERM. DATUM: DFI 826.3 F
DLI 819.3 F

DRG. MEASURED FROM: K3

DATE: 21 JAN 86
RUN NO: 1

DEPTH-DRILLER: 2750.0 F
DEPTH-LOGGER: 2740.0 F
BTH. LOG INTERVAL: 2734.0 F
TOP LOG INTERVAL: 453.0 F
CASSING-DRILLER: 454 F
CASSING-LOGGER: 553 F
CASSING: 9 5/8"
BIT SIZE: 8 3/4"
BIT DEPTH: 2750 F

RECEIVED: PLD
JAN 23 1986
DEPT. OF GEOLOGY
ASTORIA, OREGON

OTHER SERVICES:
BHC
LBI-CNL-GR
HBT
VSP

PROGRAM
TAPE NO: 26.2
SERVICE ORDER NO: 4353117

TYPE FLUID IN HOLE: GEL/POLYMER
DENSITY: 10.3 LB/G
VISCOSITY: 47.0 S
PHI: 9.5
FLUID LOSS: 5.0 C3
SOURCE OF SAMPLE: FLOWLINE
RM: 2.870 OHMM AT 66.0 DEGF
RMF: 3.040 OHMM AT 42.0 DEGF
RMC: 3.340 OHMM AT 42.0 DEGF
SOURCE RMF/RMC: MEASURED/MEASURED
RM AT BHT: 1.806 OHMM AT 109. DEGF
RMF AT BHT: 1.284 OHMM AT 109. DEGF
RMC AT BHT: 1.410 OHMM AT 109. DEGF

TIME CIRC. STOPPED: 18:00
TIME LOGGER ON BTH.: 22:04 1-21

MAX. REC. TEMP: 109.0 DEGF

LOGGING UNIT NO: 8057
LOGGING UNIT LOC: SACRAMENTO
RECORDED BY: PILCH
WITNESSED BY: MCMURRY

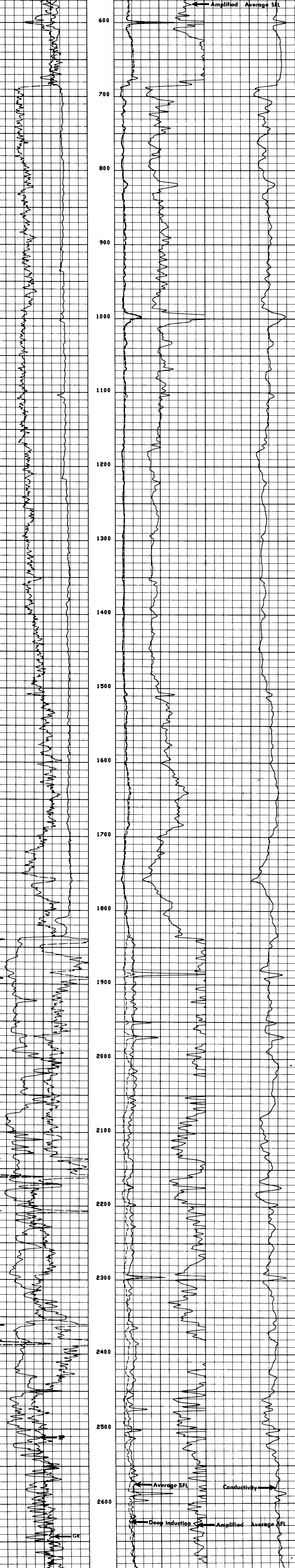
REMARKS:
700PPM CHLORIDES.
INDUCTION AND SONIC RUN IN COMBINATION.
58 DEGREES MAXIMUM DEVIATION.
CHE-2 AND STANDOFF USED FOR SONIC CENTRALIZATION.

EQUIP-EC NUMBERS-
DIS-EC 1422 DIC-DA 1149 MCD-DA 1237 SLS-RC 252
SLC-FA 1321 IEM-BD 162 SLM-DA 443 NLM-BC 202

ALL INTERPRETATIONS ARE OPINIONS BASED ON INFERENCES FROM ELECTRICAL OR OTHER MEASUREMENTS AND WE CANNOT, AND DO NOT GUARANTEE THE ACCURACY OR CORRECTNESS OF ANY INTERPRETATIONS, AND WE SHALL NOT, EXCEPT IN THE CASE OF GROSS OR WILLFUL NEGLIGENCE ON OUR PART, BE LIABLE OR RESPONSIBLE FOR ANY LOSS, COSTS, DAMAGES OR EXPENSES INCURRED OR SUSTAINED BY ANYONE RESULTING FROM ANY INTERPRETATION MADE BY ANY OF OUR OFFICERS, AGENTS OR EMPLOYEES. THESE INTERPRETATIONS ARE ALSO SUBJECT TO OUR GENERAL TERMS AND CONDITIONS AS SET OUT IN OUR CURRENT PRICE SCHEDULE.

FILE 3 21-JAN-86 23:15
DATA ACQUIRED 21-JAN-86 22:44

GR (GAPI)	0.0	150.00	ILD (OHMM)	0.0	30.000	SFLA(OHMM)	0.0	6.0000	CILD(MMHQ)	0.0	1000.0	0.0
SP (MV)	-100.0	0.0	SFLA(OHMM)	0.0	30.000							



FILE 3 21-JAN-86 23:08
DATA ACQUIRED 21-JAN-86 22:04

GR (GAPI)	0.0	150.00	ILD (OHMM)	0.0	30.000	SFLA(OHMM)	0.0	6.0000	CILD(MMHQ)	0.0	1000.0	0.0
SP (MV)	-100.0	0.0	SFLA(OHMM)	0.0	30.000							

SENSOR MEASURE POINT TO TOOL ZERO

CBL	43.9	FEET	AMPL	43.9	FEET
TT3	40.1	FEET	TT4	39.1	FEET
TT1	42.9	FEET	TT2	43.9	FEET
GR	64.0	FEET	SRAT	41.4	FEET
ILD	9.4	FEET	CALI	31.8	FEET
ILM	8.7	FEET	SP	6.4	FEET
SPAR	8.5	FEET	SPF	2.5	FEET
NOIS	35.6	FEET	TENS	2.5	FEET

PARAMETERS

NAME	VALUE	UNIT	NAME	VALUE	UNIT
HSV1	HF1		DMS	16	
DSIM	5	US	DDEL	200	US
CDS	100.000		DMCO	512	
DTF	189.000	US/F	DTH	56.0000	US/F
SBR	1.00000	OHMM	DSEC	4.10000	MMHD
FPHI	SPHI		MSEC	6.50000	MMHD
BS	8.75000	IN	BMS	OPEN	
PP	NORM		DD	0.0	F

TAPE NOT MADE

-end-