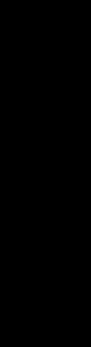


CC 41-86-55

Schlumberger

2" BHC SONIC



COMPANY: ARCO EXPLORATION AND TECHNOLOGY COMPANY
 WELL: "COLUMBIA COUNTY" #41-6
 RECEIVED: PLD
 APR 1 1986

FIELD: MIST GAS
 COUNTY: COLUMBIA
 STATE: OREGON
 LOCATION: S22144MS4SU 306.15' S245M
 SEC: 6
 TWP: 5N
 RGE: 5W

PERMANENT DATUM: EL
 ELEVATIONS -
 ELE. MEASUREMENT: 815.3 F
 LUG MEASURED FROM: KB: 822.3 F
 18.0 F ABOVE PERM. DATUM GL: 815.3 F
 DRG. MEASURED FROM: KB
 GL: 815.3 F
 432117

DATE: 21 JAN 86
 RUN NO: 1
 DEPTH-DRILLER: 2750.0 F
 DEPTH-LOGGER: 2740.0 F
 BTM. LOG INTERVAL: 2638.0 F
 TDP. LOG INTERVAL: 453.0 F
 CASING-DRILLER: 454 F
 CASING-LOGGER: 453 F
 CASING: 9 5/8"
 BIT SIZE: 8 3/4"
 DEPTH: 2750 F

OTHER SERVICES-
 DIL
 LDT-CNL-GR
 HDT
 CSS
 VSP

PROGRAM
 TORI NO:
 KB: 26.2
 SERVICE
 ORDER NO:
 432117

TYPE FLUID IN HOLE: GEL/POLYMER
 DENSITY: 10.3 LB/G
 VISCOSITY: 47.0 S
 PH: 9.5
 FLUID LOSS: 5.0 CC
 SOURCE OF SAMPLE: FLOWLINE
 RM: 2.870 DHMM AT 66.0 DEG F
 RMF: 3.040 DHMM AT 42.0 DEG F
 RMC: 3.340 DHMM AT 42.0 DEG F
 SOURCE RMF/RMC: MEASURED/MEASURED
 RM AT BHT: 1.806 DHMM AT 109. DEG F
 RMF AT BHT: 1.284 DHMM AT 109. DEG F
 RMC AT BHT: 1.410 DHMM AT 109. DEG F
 TIME CIRC. STOPPED: 18:00 1-21
 TIME LOGGER ON BTM: 22:04 1-21
 MAX. REC. TEMP: 109.0 DEG F
 LOGGING UNIT NO: 8057
 RECORDED BY: SACRAMENTO
 WITNESSED BY: PILCH
 MCMURRY

REMARKS:
 700PPM CHLORIDES.
 INDUCTION AND SONIC RUN IN COMBINATION.
 58 DEGREES MAXIMUM DEVIATION.
 CME-Z AND STANDOFF USED FOR SONIC CENTRALIZATION.

EQUIPMENT NUMBERS-

DIS-EC 1422 DIC-DA 1149 MCD-DA 1237 SLS-RC 252
 SLC-FA 1321 IEM-BD 162 SLM-DA 443 NLM-BC 202

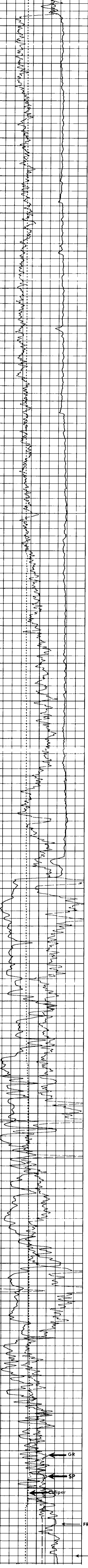
ALL INTERPRETATIONS ARE OPINIONS BASED ON INFORMATION FROM ELECTRICAL OR OTHER MEASUREMENTS AND WE CANNOT, AND DO NOT GUARANTEE THE ACCURACY OR CORRECTNESS OF ANY INTERPRETATIONS, AND WE SHALL NOT, EXCEPT IN THE CASE OF GROSS OR WILLFUL NEGLIGENCE ON OUR PART, BE LIABLE OR RESPONSIBLE FOR ANY LOSS, COSTS, DAMAGES OR EXPENSES INCURRED OR SUSTAINED BY ANYONE RESULTING FROM ANY INTERPRETATION MADE BY ANY OF OUR OFFICERS, AGENTS OR EMPLOYEES. THESE INTERPRETATIONS ARE ALSO SUBJECT TO OUR GENERAL TERMS AND CONDITIONS AS SET OUT IN OUR CURRENT PRICE SCHEDULE.

FILE 3 21-JAN-86 23:17
 DATA ACQUIRED 21-JAN-86 22:44

CALI(IN.) 6.0000 16.000
 GR (GAPI) 0.0 150.00
 SP (MV) -100.0 0.0

DT (US/F) 175.00 75.000

FILE 3 21-JAN-86 23:12
 DATA ACQUIRED 21-JAN-86 22:44



FILE 3 21-JAN-86 23:08
 DATA ACQUIRED 21-JAN-86 22:04

CALI(IN.) 6.0000 16.000
 GR (GAPI) 0.0 150.00
 SP (MV) -100.0 0.0

DT (US/F) 175.00 75.000

SENSOR MEASURE POINT TO TOOL ZERO

CBL 43.9 FEET
 TT3 40.1 FEET
 TT1 42.9 FEET
 GR 64.0 FEET
 ILD 9.4 FEET
 ILM 5.7 FEET
 SPAR 2.5 FEET
 NDIS 35.6 FEET

AMPL 43.9 FEET
 TT4 39.1 FEET
 TT2 42.9 FEET
 SRAT 41.4 FEET
 CALI 31.8 FEET
 SFL 6.4 FEET
 SP 2.5 FEET
 TENS 2.5 FEET

PARAMETERS

NAME VALUE UNIT
 HSV1 HF1
 DSN1 5 US
 CDT5 100.000
 DTF 189.000 US/F
 SBR 1.00000 DHMM
 FPPI SPPI
 BS 8.75000 IN
 PP NDRM

NAME VALUE UNIT
 DNS 16
 DDEL 200 US
 DWCD 512
 DTM 56.0000 US/F
 DSEC 4.10000 MMHD
 MSEC 6.50000 MMHD
 BMS OPEN
 DO 0.0 F

TAPE NOT MADE

-end-