

02-41-30-75

Schlumberger
DUAL INDUCTION-SFL-SONIC
LINEAR CORRELATION LOG

COMPANY: NAHAMA AND WEAGANT ENERGY CO.
 WELL: "ROARING CREEK" C.C. #41-36-75
 FIELD: MIST
 COUNTY: COLUMBIA STATE: OREGON
 LOCATION: 1185'S & 795'W
 FROM NE CORNER OF:
 API SERIAL NO: 36-009-003007
 SECT: 36 TWP: 7N SW: 5W
 ELEV: K: 819.5 F
 ELEV: G: 978.5 F
 ELEV: G: 889.5 F
 DATE: 9-JULY-93
 DRILLING MEASURED FROM: KI
 PERMANENT DATUM: CB
 LOG MEASURED FROM: KI
 ELEV: 100 F ABOVE PERM. DATUM
 G: 889.5 F

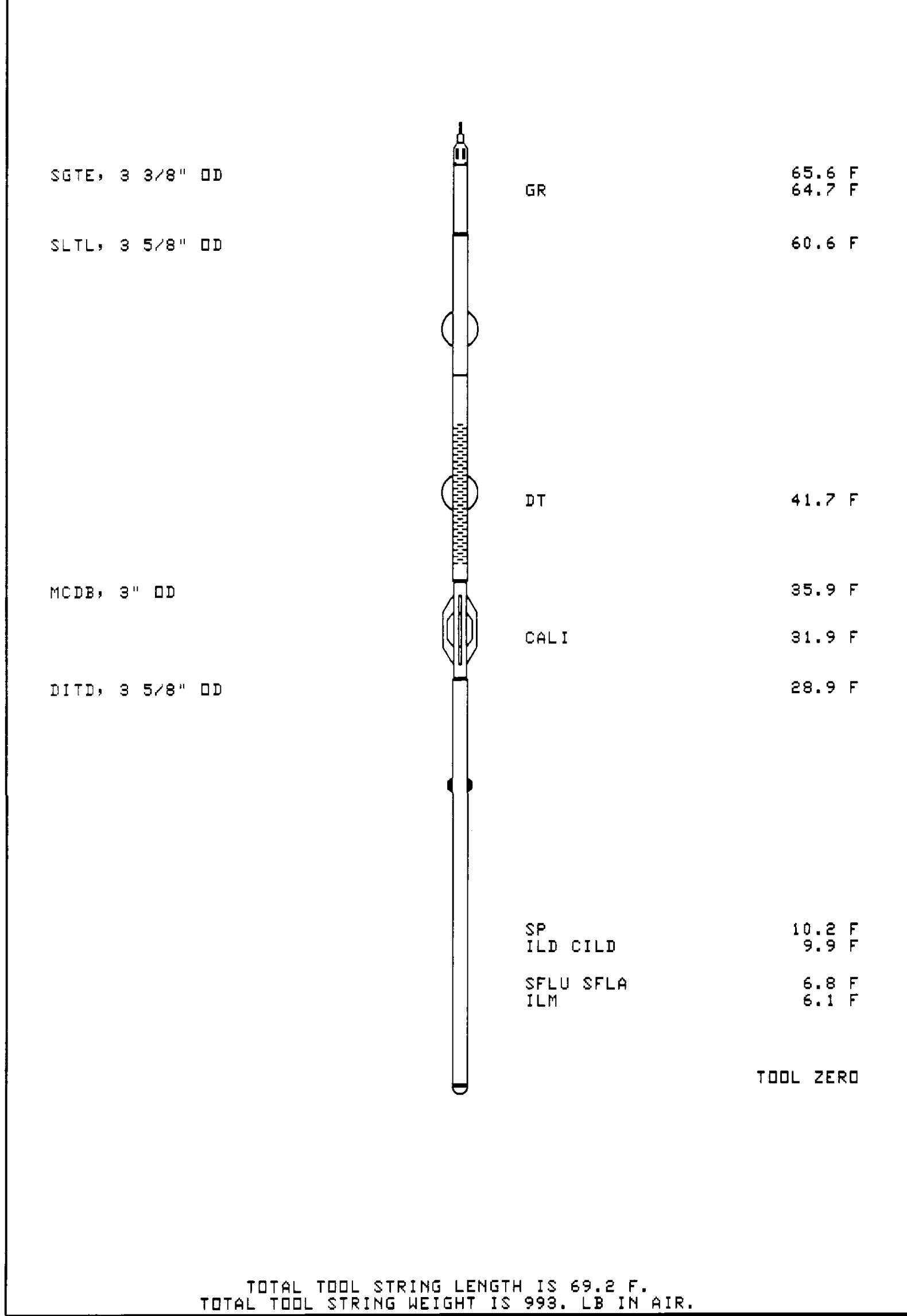
The well name, location and borehole reference data were furnished by the customer.

All interpretations are opinions based on inferences from electrical or other measurements and we cannot, and do not, guarantee the accuracy or correctness of any interpretations, and we shall not, except in the case of gross or willful negligence on our part, be liable or responsible for any loss, costs, damages or expenses incurred or sustained by anyone resulting from any interpretations made by any of our officers, agents or employees. These interpretations are also subject to Clause 4 of our General Terms and Conditions as set out in our current Price Schedule.

Run No.	CNE
Service Order No.	624362
Drilling Fluid Level	5.0 C.F.
Salinity	0.000 PPM
Rmf @ BHT	3272 CHMM @ 88.0 DEG F
Rmc @ BHT	2045 CHMM @ 88.0 DEG F
Logging Speed	3200.0 F/H
EQUIPMENT DATA	
Tool Number 1	DIS-EC 1342
Tool Number 2	DIC-DA 1388
Tool Number 3	MCD-DA 668
Tool Number 4	SLS-WC 1335
Tool Number 5	SLS-MA
Tool Number 6	SGC-JC
Tool Number 7	SEM-BD 645
Tool Number 8	SIL-DA 383
Tool Number 9	NLM-BC 456
Tool Number 10	
Tool Number 11	
Tool Number 12	

REMARKS: TWO CMEZ CENTRALIZERS RUN ON SONIC
 TWO 15" STANDOFFS RUN ON INDUCTION TOOL
 REPEAT SECTION CHOSEN BY CLIENT

LOGGING TOOL STRING SKETCH



TOTAL TOOL STRING LENGTH IS 69.2 F.
 TOTAL TOOL STRING WEIGHT IS 993. LB IN AIR.

MAIN LOG

ACCUMULATED INTEGRATION VALUES SUMMARY:

Integrated Hole Volume:	467.442 F3	FROM 1792.00 F	TO 493.000 F
Integrated Cement Volume:	323.973 F3	FROM 1792.00 F	TO 493.000 F

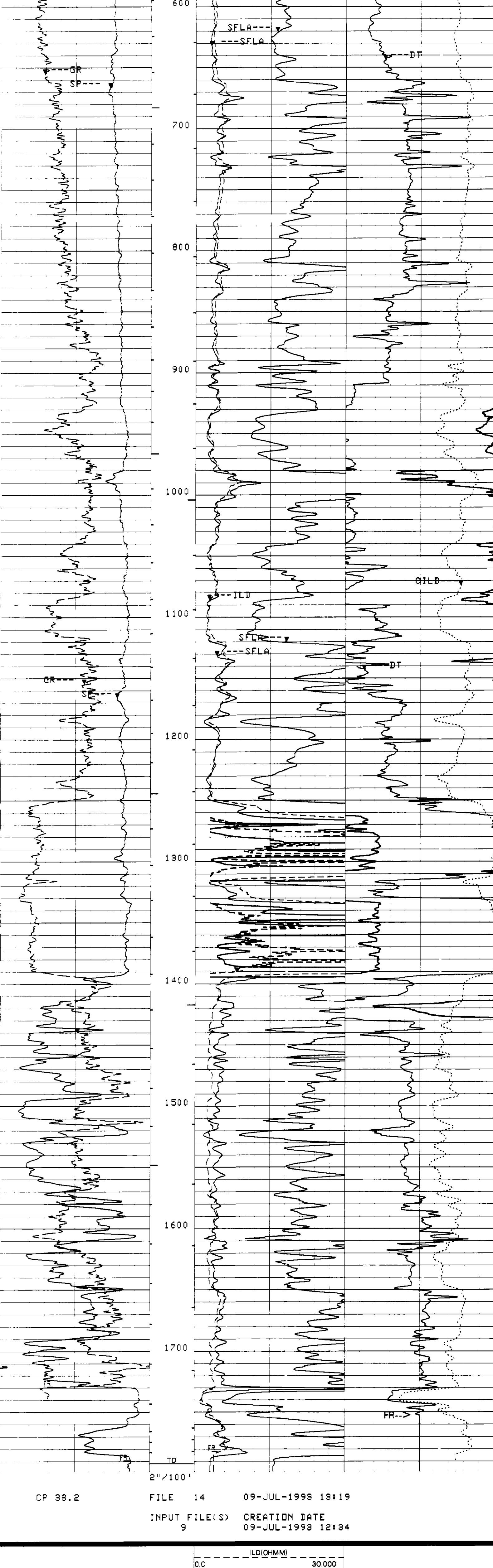
(ASSUMING 4.50000 IN O.D. CASING)

EVENT MARK SUMMARY:

OUTPUT	INTERVAL BETWEEN PIPS	DEPTH TRACK EDGE
Integrated Hole Volume	10.0000 F3	LEFT EDGE
Integrated Cement Volume	10.0000 F3	RIGHT EDGE

GR(GAPI)	5.000	ILD(OHMM)	30.000	CILD(MM/M)	0.0
SP(MV)	0.0	SFLA(OHMM)	6.0000	DT(US/F)	0.0
CC	0.0	SFLA(OHMM)	30.000	DT(US/F)	75.000

CP 38.2 FILE 14 09-JUL-1993 13:24
 INPUT FILE(S) 9 CREATION DATE 09-JUL-1993 12:34



CP 38.2 FILE 14 09-JUL-1993 13:19
 INPUT FILE(S) 9 CREATION DATE 09-JUL-1993 12:34

GR(GAPI)	180.00	ILD(OHMM)	30.000	CILD(MM/M)	0.0
SP(MV)	0.0	SFLA(OHMM)	6.0000	DT(US/F)	0.0
CC	0.0	SFLA(OHMM)	30.000	DT(US/F)	75.000

SENSOR MEASURE POINT TO TOOL ZERO

SRAT 41.7 FEET	AMPL 44.1 FEET
CBFS 43.1 FEET	CBL 44.1 FEET
TT2 44.1 FEET	TT1 43.1 FEET
TT4 39.3 FEET	TT3 40.3 FEET
TT 44.1 FEET	TO 44.1 FEET
CBSL 44.1 FEET	TSL 44.1 FEET
CALI 31.9 FEET	GR 62.7 FEET
ILM 6.1 FEET	ILD 9.9 FEET
SP 2.5 FEET	SFLA 6.8 FEET
NDIS 2.5 FEET	SPAR 2.5 FEET

PARAMETERS

PARAMETER	VALUE	UNIT
SMB - Sonic Memory Board	DISA	
VDLR - Defn not found	2IN	
TOCA - T0 Connection Status	DISA	
RATE - Firing Rate	15	HZ
DG - Downhole Gain	/5	
DETE - Detection	E2	
NMSG - Near Minimum Sliding Gate	180	US
CBLG - CBL Gate Width	35	US
AMPL - Sonic Amplitude	2	
CBL - Cement Bond Log Amplitude	UT	
HFM - Waveform Mode	1	
SS - Sweep Speed	FAST	
TOD - T0 Delay	DISA	
DTF - Delta-T Fluid	189.000	US/F
DTM - Delta-T Matrix	56.0000	US/F
CDTS - Correction for Delta-T Shale, Empirical	100.000	
SPFS - Sonic Porosity Formula Select	R-H	
PP - Playback Processing	NORM	
DD - Depth Offset for Logical Unit L11	0.0	F
WMUD - Weight of Mud	8.90000	LB/G
MSEC - Medium Sonde Error Correction	7.00000	MM/M
SBR - Shoulder Bed Resistivity	1.60000	OHMM
DSEC - Deep Sonde Error Correction	5.60000	MM/M
FCD - Future Casing Diameter	4.50000	IN
NCJT - NGT Calibration Jig Type	GSRY	
FPHI - Formation Factor Formula Porosity	SPHI	
DWCO - Digitizer Word Count	512	
DSIN - Digitizer Sample Interval	5	US
DDSL - Digitizing Delay	200	US
BS - Bit Size	7.87500	IN
BHS - BoreHole Status (Open or Cased)	OPEN	

COMPANY: NAHAMA AND WEAGANT ENERGY CO. SCHL. FR 788.0 F
 WELL: "ROARING CREEK" C.C. #41-36-75 SCHL. TD 782.0 F
 FIELD: MIST DRLR. TD 1782.0 F
 COUNTY: COLUMBIA STATE: OREGON Elev: KB 978.5 F
 DF 978.5 F
 QL 889.5 F



DUAL INDUCTION-SFL-SONIC
LINEAR CORRELATION LOG

-End-