



**COMPANY** ARCO OIL AND GAS COMPANY  
**WELL** Columbia County 42-9-65 Redrill  
**FIELD** MIST  
**LOCATION** North 89°48'18" East 103.11'  
 South 0°11'42" East 2298.05'  
 from NE corner of Sec 9, T6N, R5W  
**COUNTY, STATE** Columbia, Oregon  
**API WELL INDEX NO.**  
**ELEVATION** 766.54' G.L. 776.54' K.B.  
**DATES** FROM 10-31-87 TO 11-3-87  
**DEPTHS** FROM 575' K.B. TO 2480' K.B.  
**SPUD DATE** 10-25-87  
**DRILLING CONTRACTOR** Taylor Drilling Co. #4  
**MUD COMPANY** M-I Drilling Fluids Inc.  
**LOGGING GEOLOGISTS** Jeff Duval  
 Jim Eastes

ABBREVIATIONS		MUD WEIGHT	
NB BIT	MW	MUD WEIGHT	
RRB RERUN BIT	VIS	FUNNEL VISCOSITY	
RTB RE-TIP BIT	PV	PLASTIC VISCOSITY	
CB CORE BIT	YP	YIELD POINT	
T.G. TRIP GAS	FL	FLUID LOSS (cc/30 min)	
S.G. SURVEY GAS	CL	PPM CHLORIDE ION	
WG WIPER GAS	RM	MUD RESISTIVITY	
C.G. CONNECTION GAS	RMF	FILTRATE RESISTIVITY	
WOB WEIGHT ON BIT	LAT	LOGGED AFTER TRIP	
RPM ROTARY REV/MIN	NR	NO RETURNS	
PP PUMP PRESSURE	PR	POOR RETURNS	
SPM STROKES MIN	MUD TYPE	Polymer	

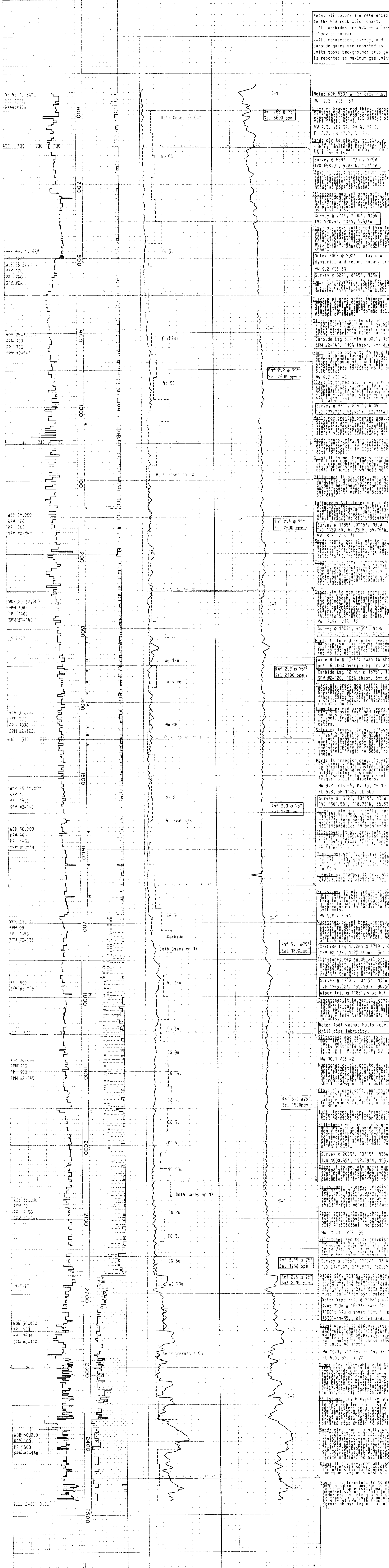
CASING RECORD	
13.375" AT	40' K.B.
_____ AT	_____
_____ AT	_____
_____ AT	_____
_____ AT	_____
HOLE SIZE	
8 1/2" AT	2480' K.B.
_____ AT	_____
_____ AT	_____
_____ AT	_____

**CHERT**  
**G GLASSY** **X INTRUSIVE**  
**A ARGILLACEOUS** **W WOODSTONE**  
**P PORCELANEOUS** **L LIENITE**

**SAND/SANDSTONE** **CLAY** **L LIMESTONE**  
**SHALE** **DIATOMITE** **Z DOLOMITE**  
**SILTSTONE** **CONGLOMERATE** **V VOLCANICS**

OIL: BASED ON LIVE OIL IN UNWASHED CUTTINGS AND PERCENT STAINING AND FLUORESCENCE OF WASHED SAMPLES.

**PENETRATION ANALYSIS OF RETURNS CHROMATOGRAPH - PPM REMARKS**



- End -