



WELL LOGGING, INC.

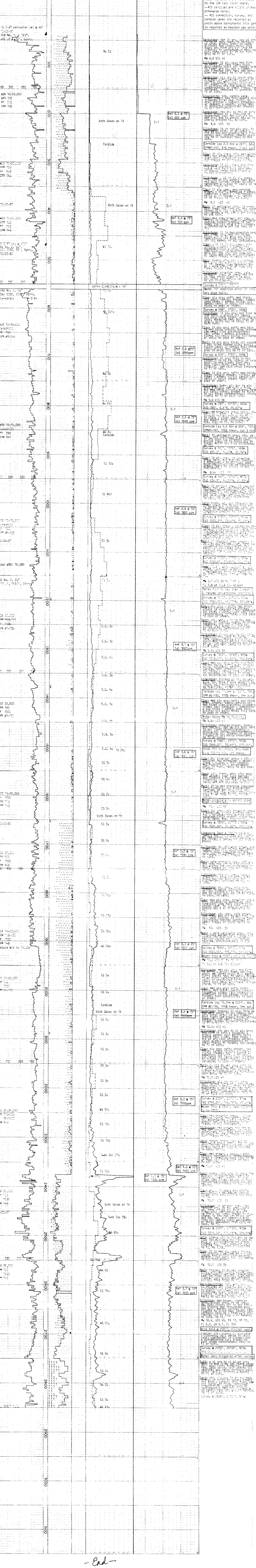
COMPANY ARCO OIL AND GAS COMPANY
WELL Columbia County 42-9-65
FIELD MIST
LOCATION North 89°41'18" East 105.11'
 South 07°14'12" East 2296.03'
 from NE corner of Sec 9, 10N, 25W
COUNTY, STATE Columbia, Oregon
API WELL INDEX NO.
ELEVATION 766.54' G.L. 776.54' K.B.
DATES FROM 10-25-87 TO 10-30-87
DEPTHS FROM 40' K.S. TO 2850' K.B.
SPUD DATE 10-25-87
DRILLING CONTRACTOR Taylor Drilling Co. #4
MUD COMPANY M-I Drilling Fluids Inc.
LOGGING GEOLOGISTS Jeff Duvall
 Bill Gilbur

ABBREVIATIONS		MUD WEIGHT		CASING RECORD	
NB	BIT	MW	MUD WEIGHT	11.375"	AT 40' K.B.
RRB	RE-RUN BIT	VIS	FUNNEL VISCOSITY	9.625"	AT 470' K.B.
RTB	RE-TIP BIT	PV	PLASTIC VISCOSITY		AT
CB	CORE BIT	YP	YIELD POINT		AT
T.G.	TRIP GAS	FL	FLUID LOSS (cc/30 min)		AT
S.G.	SURVEY GAS	CL	PPM CHLORIDE ION		AT
W.G.	WIPER GAS	RM	MUD RESISTIVITY		AT
C.G.	CONNECTION GAS	RFM	FILTRATE RESISTIVITY		AT
WOB	WEIGHT ON BIT	LAT	LOGGED AFTER TRIP	12.25"	AT 472' K.B.
PP	ROTARY REV/MIN	NR	NO RETURNS	8.50"	AT 2850' K.B.
PPM	PUMP PRESSURE	PR	POOR RETURNS		AT
SPM	STROKES/MIN	MUD TYPE			AT

<input type="checkbox"/> SAND SANDSTONE	<input type="checkbox"/> CLAY	<input type="checkbox"/> LIMESTONE	<input type="checkbox"/> CHERT	<input type="checkbox"/> GLASSY	<input checked="" type="checkbox"/> INTRUSIVE
<input type="checkbox"/> SHALE	<input type="checkbox"/> DIATOMITE	<input type="checkbox"/> DOLOMITE	<input type="checkbox"/> ARGILLACEOUS	<input type="checkbox"/> MUDSTONE	<input type="checkbox"/> LITE
<input type="checkbox"/> SILTSTONE	<input type="checkbox"/> CONGLOMERATE	<input type="checkbox"/> VOLCANICS	<input type="checkbox"/> PORCELANEOUS	<input type="checkbox"/> LIMONITE	

OIL: BASED ON LIVE OIL IN UNWASHED CUTTINGS AND PERCENT STAINING AND FLUORESCENCE OF WASHED SAMPLES.

PENETRATION ANALYSIS OF RETURNS WASHED SAMPLES



- End -