

COMPANY: NORTHWEST NATURAL GAS  
 WELL: OM 22-26-65 RD  
 FIELD: MIST  
 COUNTY: COLUMBIA STATE: OREGON  
 Schlumberger  
 ARRAY INDUCTION  
 BHC SONIC /SP/GR  
 SCALE: 2" = 100'

LOCATION: 174422 SOUTH, 2512 13 EAST  
 FLOW THE NW CORNER OF 26  
 Field: MIST  
 Location: 1744 22' SOUTH 2512.13 EAST  
 Well: OM 22-26-65 RD  
 Company: NORTHWEST NATURAL GAS  
 Logging Date: 21 MAY 2000  
 Run Number: 21151 F  
 Schlumberger Depth: 2136 F  
 Bottom Log Interval: 2136 F  
 Top Log Interval (ft Depth): 487.7 F  
 Casing Schlumberger: 487.7 F  
 Casing Depth: 487.7 F  
 Bit Size: 4 1/2 IN

DISCLAIMER  
 THE USE OF AND RELIANCE UPON THIS RECORDED DATA BY THE HEREIN NAMED COMPANY (AND ANY OF ITS AFFILIATES, PARTNERS, REPRESENTATIVES, AGENTS, CONSULTANTS AND EMPLOYEES) IS SUBJECT TO THE TERMS AND CONDITIONS AGREED UPON BETWEEN SCHLUMBERGER AND THE COMPANY, INCLUDING: (a) RESTRICTIONS ON USE OF THE RECORDED DATA; (b) DISCLAIMERS AND WAIVERS OF WARRANTIES AND REPRESENTATIONS REGARDING COMPANY'S USE OF AND RELIANCE UPON THE RECORDED DATA; AND (c) CUSTOMER'S FULL AND SOLE RESPONSIBILITY FOR ANY INFERENCE DRAWN OR DECISION MADE IN CONNECTION WITH THE USE OF THIS RECORDED DATA.

OTHER SERVICES1: FMI GR  
 OS1:  
 OS2:  
 OS4:  
 OS5:  
 REMARKS: RUN NUMBER 1

OTHER SERVICES2: FMI GR  
 OS1:  
 OS2:  
 OS4:  
 OS5:  
 REMARKS: RUN NUMBER 2

SERVICE ORDER #  
 FLUID LEVEL  
 LOGGED INTERVAL  
 START  
 STOP

EQUIPMENT DESCRIPTION

SURFACE EQUIPMENT WITH (CTS)-A

DOWNHOLE EQUIPMENT



MAXIMUM STRING DIAMETER 5.88 IN  
 MEASUREMENTS RELATIVE TO TOOL ZERO  
 ALL LENGTHS IN FEET

Input DLIS Files

DEFAULT HILTB.006 FN:5 PRODUCER 21-May-2000 12:08 2148.0 FT 0.0 FT

Output DLIS Files

DEFAULT HILTB.007 FN:6 PRODUCER 21-May-2000 13:30 2153.0 FT 105.0 FT

Integrated Hole/Cement Volume Summary

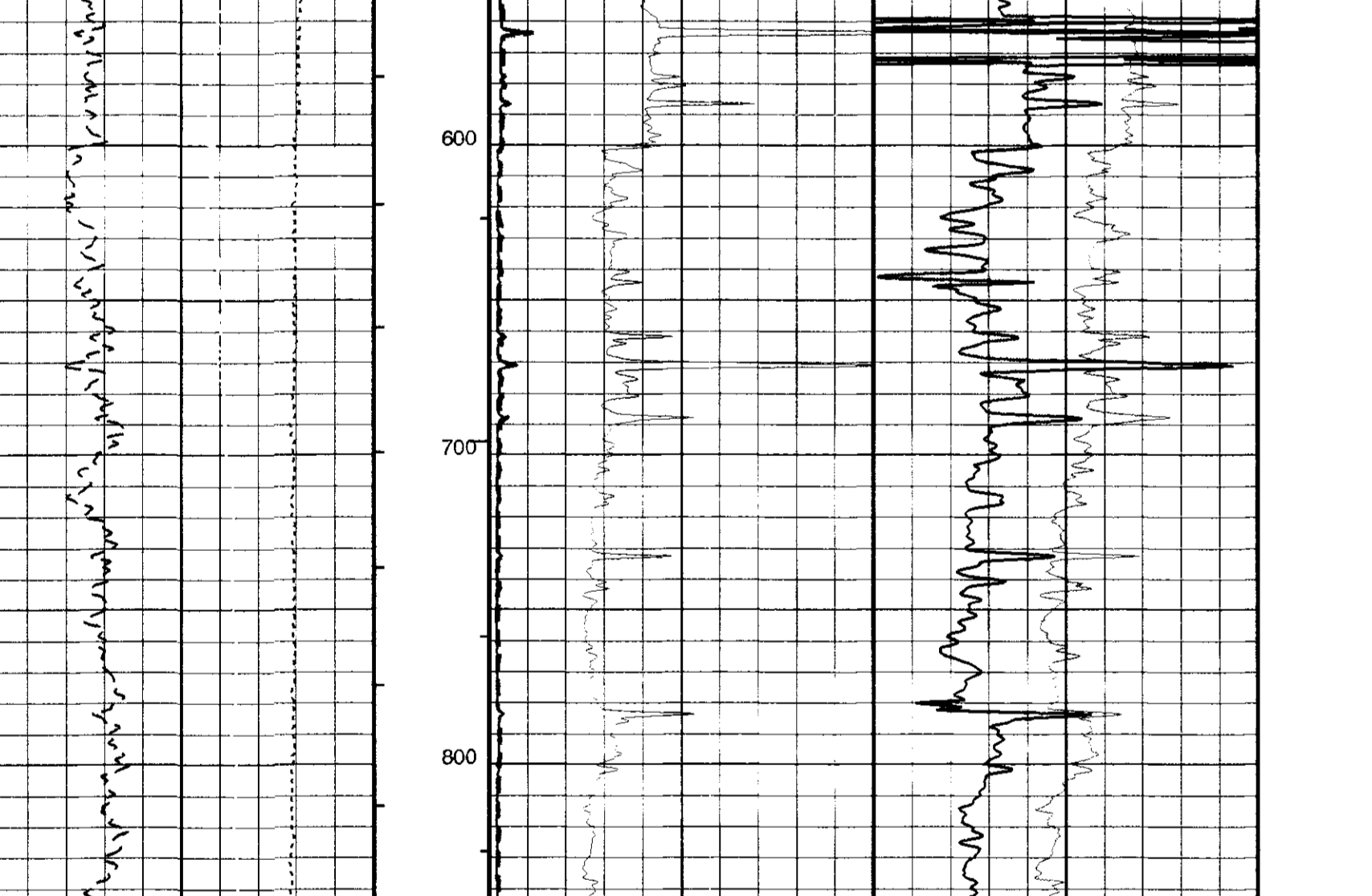
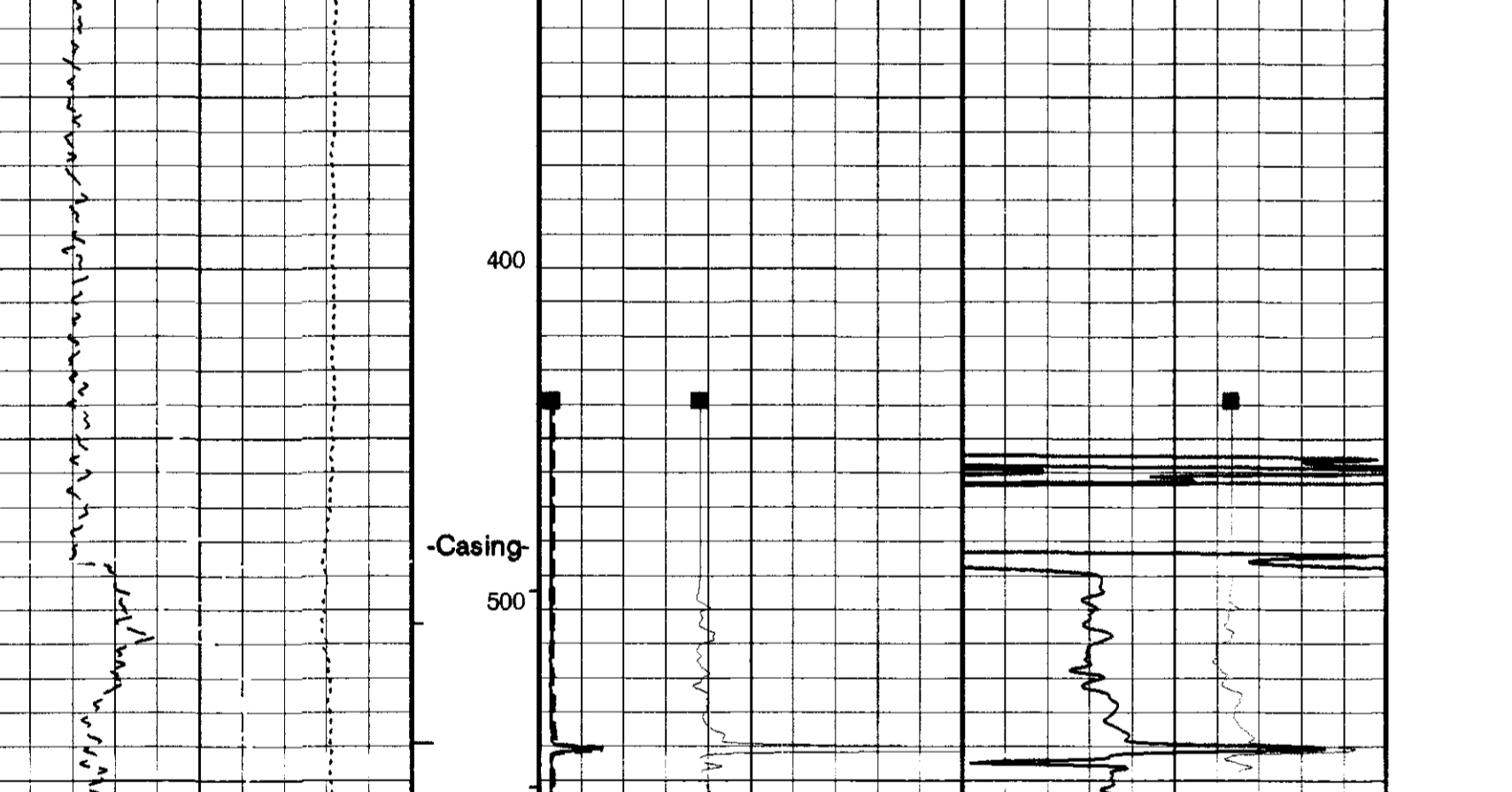
Hole Volume = 415.07 F3  
 Cement Volume = 231.24 F3 (assuming 4.50 IN casing O.D.)  
 Computed from 2151.0 FT to 487.0 FT using data channel(s) HCAL

OP System Version: 9C1-303

HILTB-DTB OP91-KP1a DSLT-TCC OP91-KP1a  
 TCC-BF OP91-KP1a

PIP SUMMARY  
 Integrated Hole Volume Minor Pip Every 10 F3  
 Integrated Hole Volume Major Pip Every 100 F3  
 Integrated Cement Volume Minor Pip Every 10 F3  
 Integrated Cement Volume Major Pip Every 100 F3

Time Mark Every 60 S



Time Mark Every 60 S

Parameters

DLIS Name	Description	Value
AHBM	Array Induction Borehole Correction Code	2 ComputeStandoff
AHBLV	Array Induction Borehole Correction Code Version Number	670
AHBLM	Array Induction Basic Logs Mode	6_One_Two_and_Four
AHBLV	Array Induction Basic Logs Code Version Number	673
AHBP	Array Induction Basic Logs Processing Option	Standard_Processing
AHCD	Array Induction Casing Detection Enable	Standard_Processing
AHCE	Array Induction Tool Centering Flag (in Borehole)	Eccentered
AHCE	Array Induction Casing Shoe Estimated Depth	-50000
AHCE	Array Induction Response Set Version For Four ft Resolution	30.66.23.11
AHCE	Array Induction Mud Resistivity Factor	1
AHCE	Array Induction Response Set Version For One ft Resolution	30.66.23.11
AHCE	Array Induction Radial Profiling Code Version Number	710
AHCE	Array Induction Radial Parameterization Code Version Number	710
AHCE	Array Induction Response Set Version For Two ft Resolution	30.66.23.11
AHCE	Bottom Hole Temperature (used in calculations)	86
AHCE	Drilling Fluid Density	6.250
AHCE	General Gradient	8.90
AHCE	Depth Offset for Logical Unit 1	5.0
AHCE	Depth Offset Repeat Analysis	5.0
AHCE	Delta-T Computation Mode	FULL
AHCE	Form Factor Exponent	2
AHCE	Form Factor Numerator	2
AHCE	Generalized Calliper Selection	HCAL
AHCE	Average Angular Deviation of Borehole from Normal	12
AHCE	Geothermal Gradient	0.01
AHCE	Generalized Mud Resistivity Selection	AITH_RESIST
AHCE	Generalized Temperature Selection	LINEAR_ESTIMATE
AHCE	HILT Speed Correction Mode	NO_SC
AHCE	STI Uses HILT Acceleration	YES
AHCE	Soave Fitting Mode	BHC
AHCE	Mud Sample Temperature	78.00
AHCE	Surface Hole Temperature	NORMAL
AHCE	SP Next Value	88
AHCE	Total Depth	2151

Format: AITSONS2 Vertical Scale: 2" per 100' Graphics File Created: 21-May-2000 13:30

OP System Version: 9C1-303

HILTB-DTB OP91-KP1a DSLT-TCC OP91-KP1a  
 TCC-BF OP91-KP1a

Input DLIS Files

DEFAULT HILTB.006 FN:5 PRODUCER 21-May-2000 12:08 2148.0 FT 0.0 FT

Output DLIS Files

DEFAULT HILTB.007 FN:6 PRODUCER 21-May-2000 13:30

COMPANY: NORTHWEST NATURAL GAS

WELL: OM 22-26-65 RD

FIELD: MIST

COUNTY: COLUMBIA

STATE: OREGON

Schlumberger

ARRAY INDUCTION  
 BHC SONIC /SP/GR  
 SCALE: 2" = 100'

BOTTOM LOG INTERVAL	2136 F
SCHLUMBERGER DEPTH	2144 F
DEPTH DRILLER	2151 F
KELLY BUSHING	631 F
DRILL FLOOR	629 F
GROUND LEVEL	621 F